



Power Grid Bangladesh PLC
National Load Dispatch Center (NLDC)
System Summary Report

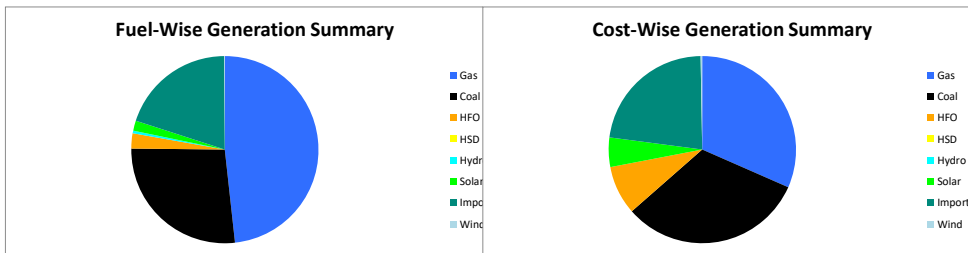
Date : 06-12-2025

Power Supply Scenario

Day Peak Generation	8880.84	MW	12:00 Hr.	Energy Generated	213.39198	MKWHr.
Day Peak Demand	8880.84	MW	12:00 Hr.	Energy Unserviced	0.00000	MKWHr.
Evening Peak Generation	11002.7	MW	19:00 Hr.	Energy Demand	213.39198	MKWHr.
Evening Peak Demand	11002.7	MW	19:00 Hr.	Maximum Temperature	26.50	°C
Minimum Generation of the Day	6972.96	MW	05:00 Hr.	Total Gas Supplied	756.07	MMCFD
Maximum Generation of the Day	11002.7	MW	19:00 Hr.	Production Cost per KWHR	5.34801	Tk.

Zone-wise Generation Summary (MKWHr.)

	Gas	Coal	HFO	HSD	Hydro	Solar	Import	Wind	Total
Dhaka Zone	25.32	0.00	2.51	0.00	0.00	0.16	0.00	0.00	27.99
Chattogram Zone	5.54	18.04	0.91	0.00	0.98	0.02	0.00	0.21	25.69
Cumilla Zone	22.10	0.00	0.65	0.00	0.00	0.43	2.22	0.00	25.40
Mymensingh Zone	2.06	0.00	1.05	0.00	0.00	0.29	0.00	0.00	3.39
Sylhet Zone	19.75	0.00	0.00	0.00	0.00	0.06	0.00	0.00	19.81
Khulna Zone	6.10	11.79	0.00	0.00	0.00	0.46	16.46	0.00	34.81
Barishal Zone	7.98	26.95	0.00	0.00	0.00	0.00	0.00	0.00	34.93
Rajshahi Zone	14.20	0.00	0.00	0.00	0.00	1.19	23.78	0.00	39.16
Rangpur Zone	0.00	0.63	0.49	0.00	0.00	1.08	0.00	0.00	2.21
Total	103.04	57.41	5.61	0.00	0.98	3.69	42.46	0.21	213.39



Production Cost (Tk.)

Fuel	Tk.	Fuel	Tk.
Gas	360063252.2	Hydro	97600
Coal	365839899.1	Solar	57702944.32
HFO	96093490.1	Import	258283563.4
HSD	0	Wind	3142056
Total:		114,12,22,805 Tk.	

E-W Interconnector & Import Scenario

Energy Flow from East to West:	KWHr:	0	Import through HVDC C/B Interconnector:	MKWHr:	16.462545	Peak Hr Flow:	71.00 MW at 19:00 hr
Energy Flow from West to East:	KWHr:	42132981.83	Import through Adani C/B Interconnector:	MKWHr:	23.775272	Peak Hr Flow:	52.00 MW at 19:00 hr
Power Flow during Peak Demand (W-E):	MW:	2253	Import through Cumilla C/B Interconnector:	MKWHr:	2.22068	Peak Hr Flow:	16.00 MW at 19:00 hr
Maximum Power Flow (W-E):	MW:	2449	Total Import through C/B Interconnector:	MKWHr:	42.458497	Peak Hr Flow:	39.00 MW at 19:00 hr

Zone-wise Load-shed and Demand Summary (MW) at evening peak Hour (19:00 Hr.)

Zone	Load-Shed	Demand
Dhaka	0	3929
Chattogram	0	1193
Cumilla	0	939
Mymensingh	0	820
Sylhet	0	394
Khulna	0	1218
Barishal	0	318
Rajshahi	0	946
Rangpur	0	708
Total	0	10465

Status of unavailable Power Plant

Planned S/D			Forced S/D		
Sl	Plant Name	Capacity	Sl	Plant Name	Capacity
1	Baghabari 100 MW GTPP	100			
2	Barapukuria TPP Unit-2	85			
3	Siddhirgonj 210 MW TPP	115			
Total			0		
Total Unavailable Capacity			300		

Event Summary

Outage Time	Restoration Time	Description of Event	Description of Event
08:03	14:32	Gopalgarj (O) - Gopalgan (N) Ckt-1 Project Work S/D from Gopalgarj 132/33kV end Due to T-3 jack bus installation and from Gopalgarj 400/132kV end Due to G2G project work	
08:06	16:11	Joypurhat 132/33kV S/S Transformer T-1 (407 T) LT Scheduled S/D Due to Annual Maintenance.	
08:07	16:10	Joypurhat 132/33kV S/S Transformer T-1 (407 T) HT Scheduled S/D Due to Annual Maintenance.	
08:20	17:58	Natore 132/33kV S/S TR-3 (425 T) LT Scheduled S/D Due to Annual maintenance work	
08:22	17:58	Natore 132/33kV S/S TR-3 (425 T) HT Scheduled S/D Due to Annual maintenance work	



**Power Grid Bangladesh PLC
National Load Dispatch Center (NLDC)
System Summary Report**

Date : 06-12-2025

08:24	14:35	Gopalganj 132/33kV S/S T1 HT Project Work S/D Due to T3 jack bus installation.	25.0MW load interrupt.
08:24	14:36	Gopalganj 132/33kV S/S T1 LT Project Work S/D Due to T3 jack bus installation.	25.0MW load interrupt.
08:24	14:52	Gopalganj- Gopalganj(N) 132kV Ckt-2 Project Work S/D from Gopalganj 132/33kV end Due to T3 jack bus installation. and from Gopalganj 400/132kV end Due to G2G Project work	30.0MW load interrupt. Gopalganj 132/33kV end
08:25	14:39	Gopalganj 132/33kV S/S T2 LT Project Work S/D Due to T3 jack bus installation.	35.0MW load interrupt.
08:26	14:56	Rampur 230/132/33 S/S Halishahar-2 Scheduled S/D Due to Annual maintenance of Halishahar ckt-02 line.	
08:26	14:39	Gopalganj 132/33kV S/S T2 HT Project Work S/D Due to T3 jack bus installation.	35.0MW load interrupt.
08:28	14:59	Halishahar-Khulshi 132kV Ckt-2 Scheduled S/D from Halishahar 132/33kV end Due to Annual Maintenance	
08:29	13:54	Keranigonj 230/132/33kV S/S TR-1 HT Scheduled S/D Due to Annual maintenance work by pbs.	
08:29	13:54	Keranigonj 230/132/33kV S/S TR-1 HT Scheduled S/D Due to Annual maintenance work by pbs.	
08:29	13:54	Keranigonj 230/132/33kV S/S TR-1 LT Scheduled S/D Due to Annual maintenance work by pbs.	
08:33	13:52	Rangpur 132/33kV S/S Rangpur-GTPS Project Work S/D	
08:34	11:56	Chauddagram-Feni 132 kV Ckt-1 Project Work S/D from Feni 230/132kV end Due to X-link cable clamping works by project	
08:34	15:59	Jashore-Noapara 132kV Ckt-2 Scheduled S/D from Jashore 132/33kV end Due to Annual Maintenance	
08:35	14:32	Gopalganj 132/33kV S/S Main Bus Project Work S/D Due to T3 jack bus installation	60.0MW load interrupt.
08:38	17:12	Bhulta 400/230kV S/S ATR-02 HT Scheduled S/D	
08:40	16:37	Daudkandi 132/33kV S/S Transformer-3 LT Scheduled S/D Due to Annual Maintenance of PBS-3	20.0MW load interrupt.
08:42	14:01	Daudkandi 132/33kV S/S Transformer-2 HT Scheduled S/D Due to Annual Maintenance of PBS-3	20.0MW load interrupt.
08:42	16:25	Kodda 132/33kV S/S Summit 149 MW PS Scheduled S/D Due to Annual maintenance & CT replacement work	
08:42	16:36	Daudkandi 132/33kV S/S Transformer-3 HT Scheduled S/D Due to Annual Maintenance of PBS-3	20.0MW load interrupt.
08:42	14:43	Daudkandi 132/33kV S/S Transformer-2 LT Scheduled S/D Due to Annual Maintenance of PBS-3	20.0MW load interrupt.
08:43	17:04	Agargaon 230/132kV S/S 132kV Transformer-1 (405T1) HT Scheduled S/D Due to Annual maintenance.	
08:44	11:56	Chauddagram-Feni 132 kV Ckt-1 Scheduled S/D from Chauddagram 132/33kV end Due to Yearly Maintenance at Feni 230 kv Grid	
08:51	18:31	Barapukuria-Bogura 230 kv Ckt-2 Scheduled S/D from Barapukuria 230/132/33kV end Due to Annual maintenance work and from Bogura 400/230kV end Due to Annual Maintenance	
08:58	18:27	Fenchuganj 230/132/33kV S/S AT-01 LT Project Work S/D Due to G to G project work	
08:58	17:44	Cox'sbazar-Dohazari 132 kV Ckt-2 Scheduled S/D from Cox'sbazar 132/33kV end Due to Annual Maintenance of Doh-cox's Ckt-2 (Dohazari Side) and from Dohazari 132/33kV end Due to Annual Maintenance	
09:02	16:50	Rahanpur 132/33kV S/S Rahanpur-2 Scheduled S/D Due to Annual Maintenance	
09:04	17:36	Kaliakoir 400/230/132kV S/S 400/132kV TR2 LT Scheduled S/D Due to Annual Maintenance.	
09:05	17:35	Kaliakoir 400/230/132kV S/S 400/132kV TR2 HT Scheduled S/D Due to Annual maintenance	
09:06	16:17	Baroirhat 132/33kV S/S TR-2, 416T LT Scheduled S/D	
09:06	16:17	Baroirhat 132/33kV S/S TR-2, 416T HT Scheduled S/D Due to PBS Bus maintenance works	
09:06	16:50	Chauddagram 132/33kV S/S 132 kv bus-1 Scheduled S/D Due to Yearly Maintenance.	
09:07	12:23	Bogura 132/33kV S/S Transformer-1 LT Scheduled S/D Due to Annual Maintenance	
09:08	12:23	Bogura 132/33kV S/S Transformer-1 HT Scheduled S/D Due to Annual Maintenance	
09:09	18:30	Fenchuganj 230/132/33kV S/S AT-01 HT Project Work S/D Due to G To G project work	



Power Grid Bangladesh PLC
National Load Dispatch Center (NLDC)
System Summary Report

Date : 06-12-2025

09:11	17:08	Chudanga-Jhenaidah 132 kV Ckt-1 Scheduled S/D from Jhenaidah 230/132kV end Due to Annual maintenance and from Chudanga 132/33kV end Due to Annual Maintenance.	
09:12	16:36	Kulaura 132/33kV S/S TR-1 AB LT Scheduled S/D Due to TR-01(A,B) shutdown for Tan-Delta test purpose	
09:12	16:35	Kulaura 132/33kV S/S TR-1 AB HT Scheduled S/D Due to TR-01(A,B) shutdown for Tan-Delta test purpose	
09:12	16:52	Kalyanpur-Laibag 132kV Ckt-1 Scheduled S/D from Kalyanpur 132/33kV end Due to Deadline Checking	
09:14	16:08	Madanganj 132/33kV S/S Madanganj -Summit 55 MW 132 kv Ckt Scheduled S/D Due to Annual Maintenance work	
09:15	17:17	Sreepur 230/132/33kV S/S Sreepur-Ashuganj Ckt-2 Scheduled S/D Due to Annual Maintenance.	
09:18	16:47	Rahanpur 400/132kV S/S Rahanpur-Chowdala 132 KV Line Ckt-02 Scheduled S/D Due to Annual maintenance	
09:25	16:21	Borhanuddin 230/33kV S/S Tr-Load HT Scheduled S/D Due to Annual Grid Maintenance	50.0MW load interrupt.
09:27	12:36	Mirzapur 132/33kV S/S Transformer-02(E07) LT Scheduled S/D Due to Annual Maintenance	
09:27	12:36	Mirzapur 132/33kV S/S Transformer-02(E07) HT Scheduled S/D Due to Annual Maintenance	
09:32	16:21	Borhanuddin 230/33kV S/S Tr-Load HT Scheduled S/D Due to Annual Maintenance.	50.0MW load interrupt.
09:37	16:24	Borhanuddin 230/33kV S/S Tr-Load LT Scheduled S/D Due to Annual Maintenance.	50.0MW load interrupt.
09:55	16:50	Hathazari-Raozan 230kV Ckt-1 Scheduled S/D from Hathazari 230/132/33kV end Due to Annual Maintenance Work	
	10:54	Gopalganj 400/132kV S/S 132kV Madaripur Ckt-4 is restored.	
12:04	17:02	Ishwardi-Natore 132kV Ckt-2 Scheduled S/D from Natore 132/33kV end. and from Ishurdi 132/33kV end Due to annual maintenance at natore grid substation	
12:31		Madanganj 132/33kV S/S Madanganj -Shitalakhya 132 kv Ckt Forced S/D Due to Load management purpose (order of NLDC)	
12:31		Madanganj 132/33kV S/S Madanganj -Shitalakhya 132 kv Ckt Forced S/D Due to Load management purpose (order of NLDC)	
13:46	16:45	Hasnabad 132/33kV S/S 132/33kV 414 T-2 HT Scheduled S/D Due to Red hot problem solution	
13:46	16:45	Hasnabad 132/33kV S/S 132/33kV 414 T-2 LT Scheduled S/D Due to Red hot problem solution	
	13:53	Keranigonj 230/132/33kV S/S TR-2 HT is restored.	
	13:53	Keranigonj 230/132/33kV S/S TR-2 LT is restored.	
14:15	17:01	Baroirhat 132/33kV S/S TR-1, 406T HT Scheduled S/D	
14:15	17:01	Baroirhat 132/33kV S/S TR-1, 406T LT Scheduled S/D Due to PBS annual maintenance work	
14:15	17:01	Baroirhat 132/33kV S/S TR-1, 406T LT Scheduled S/D Due to PBS annual maintenance work	
	14:32	Gopalganj (O) - Gopalganj (N) Ckt-1 is restored.	
14:38	19:18	Rajendrapur 132/33kV S/S MTR-3 LT Project Work S/D Due to PBS cable termination work on H-22 feeder.	
14:44	16:39	Daudkandi 132/33kV S/S Transformer-1 LT Scheduled S/D Due to 132/33 KV Transformer-1 shutdown for PBS-3 switching station maintenance work	35.0MW load interrupt.
14:46	16:36	Daudkandi 132/33kV S/S Transformer-1 HT Scheduled S/D Due to 132/33 KV Transformer-1 shutdown for PBS-3 switching station maintenance work	35.0MW load interrupt.
14:53	19:17	Rajendrapur 132/33kV S/S MTR-3 HT Project Work S/D Due to PBS cable termination work on H-22 feeder.	
	14:56	Gulshan 132/33kV S/S MT-1 HT is restored.	
	15:08	Gopalganj 132/33kV S/S Gallamari-1 is restored.	
	15:12	Gulshan 132/33kV S/S MT-1 LT is restored.	
	15:14	Gopalganj 132/33kV S/S Gallamari-2 is restored.	
	15:16	Gopalganj-Madhumati 132kV Ckt-1 is restored.	
	15:22	Gopalganj 132/33kV S/S Gopalganj 100 MW PS is restored.	
	15:24	Bakulia 132/33kV S/S T-2 (412T) HT is restored.	



**Power Grid Bangladesh PLC
National Load Dispatch Center (NLDC)
System Summary Report**

Date : 06-12-2025

15:46	17:30	Kaliakoir 400/230/132kV S/S 132kV Bus 1 Scheduled S/D Due to Annual Maintenance	
	16:19	Barishal-Barishal(N) 132 kV Ckt-1 is restored.	
	17:20	Shyampur 230/132kV S/S 230 kV APR (D04) is restored.	
	17:21	Khulna(C)-Noapara 132kV Ckt-1 is restored.	
	17:21	Khulna(C)-Noapara 132kV Ckt-1 is restored.	
	17:22	APR-Hasnabad 230kV Ckt-2 is restored.	
	17:27	Madunaghat 400/230kV S/S ATR-1 7006T LT is restored.	
	17:27	Madunaghat 400/230kV S/S ATR-1 7006T HT is restored.	
	17:56	Mymensingh 132/33kV S/S Bus B is restored.	
19:00		Evening Peak Generation is 11002 MW.	
	22:52	Bhulta-Ghorasal 230 kV Ckt-1 is restored.	
	22:53	Bhulta-Ghorasal 230 kV Ckt-2 is restored.	
00:33	00:38	Kulaura 132/33kV S/S TR-1 AB HT Scheduled S/D Due to Sudden temperature rise in TR-01(B) LT side	
00:33	00:38	Kulaura 132/33kV S/S TR-1 AB LT Scheduled S/D Due to Sudden temperature rise in TR-01(B) LT side	
06:19	06:41	Savar 132/33kV S/S T-2 HT Tripped showing Over Current Relay relays Due to L-35	22.0MW load interrupt.
06:19	06:41	Savar 132/33kV S/S T-1 HT Tripped showing Over Current Relay relays Due to L-35	22.0MW load interrupt.
06:32		Khulna(C)-Noapara 132kV Ckt-1 Project Work S/D from Khulna (C) end Due to Due to piling work and from Noapara 132/33kVend.	
07:00		Bhulta-Ghorasal 230 kV Ckt-1 Scheduled S/D from Bhulta 400/230kV end Due to By direction of NLDC	
07:01		Bhulta-Ghorasal 230 kV Ckt-2 Scheduled S/D from Bhulta 400/230kV end Due to by direction of NLDC	
07:09		Barishal-Barishal(N) 132 kV Ckt-1 Scheduled S/D from Barishal 230/132kV end Due to Annual Maintenance and from Barishal 132/33kV end Due to Annual maintenance work.	
07:20		Meghnaghat 400/230kV S/S ATR - 2 LT Scheduled S/D Due to For maintenance work	
07:21		Bhulta 400/230kV S/S ATR-02 HT Scheduled S/D Due to Annual Maintenance Works	
07:50		Bhulta-Rampura 230 kV Ckt-1 Scheduled S/D from Rampura 230/132kV end Due to Dead line checking. and from Bhulta 400/230kVend.	
07:50		Rangpur 132/33kV S/S Rangpur-GTPS Project Work S/D	
07:50		Agargaon 230/132kV S/S 132kV Transformer-2 (415T2) LT Scheduled S/D Due to Annual Maintenance.	
07:51		Bhulta-Rampura 230 kV Ckt-2 Scheduled S/D from Rampura 230/132kV end Due to Dead line checking. and from Bhulta 400/230kVend.	

**Sub-Divisional Engineer
Network Operation Division**

**Executive Engineer
Network Operation Division**

**Superintendent Engineer
Network Operation Division**