



Power Grid Bangladesh PLC
National Load Dispatch Center (NLDC)
System Summary Report

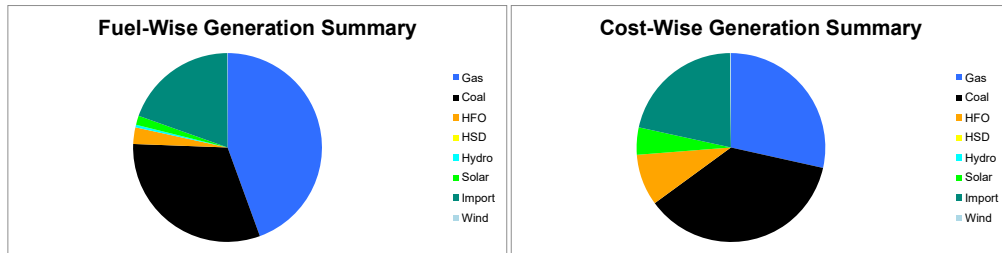
Date : 08-12-2025

Power Supply Scenario

Day Peak Generation	9830.33	MW	12:00 Hr.	Energy Generated	225.38792	MKWHr.
Day Peak Demand	9830.33	MW	12:00 Hr.	Energy Unserviced	0.00000	MKWHr.
Evening Peak Generation	11196.27	MW	18:00 Hr.	Energy Demand	225.38792	MKWHr.
Evening Peak Demand	11196.27	MW	18:00 Hr.	Maximum Temperature	27.80	°C
Minimum Generation of the Day	7511	MW	05:00 Hr.	Total Gas Supplied	746.00	MMCFD
Maximum Generation of the Day	11196.27	MW	18:00 Hr.	Production Cost per KWHr	5.45412	Tk.

Zone-wise Generation Summary (MKWHr.)

	Gas	Coal	HFO	HSD	Hydro	Solar	Import	Wind	Total
Dhaka Zone	26.15	0.00	3.07	0.00	0.00	0.16	0.00	0.00	29.38
Chattogram Zone	5.94	20.22	0.70	0.00	1.03	0.06	0.00	0.12	28.07
Cumilla Zone	19.34	0.00	0.62	0.00	0.00	0.38	2.34	0.00	22.68
Mymensingh Zone	1.16	0.00	1.41	0.00	0.00	0.24	0.00	0.00	2.81
Sylhet Zone	19.62	0.00	0.00	0.00	0.00	0.06	0.00	0.00	19.68
Khulna Zone	6.25	21.86	0.00	0.00	0.00	0.38	18.37	0.00	46.86
Barishal Zone	7.97	28.15	0.00	0.00	0.00	0.00	0.00	0.00	36.13
Rajshahi Zone	13.70	0.00	0.00	0.00	0.00	1.05	23.19	0.00	37.95
Rangpur Zone	0.00	0.00	0.57	0.00	0.00	1.26	0.00	0.00	1.83
Total	100.15	70.23	6.36	0.00	1.03	3.60	43.90	0.12	225.39



Production Cost (Tk.)

Fuel	Tk.	Fuel	Tk.
Gas	350162435.6	Hydro	102622
Coal	448674255.7	Solar	57105450.52
HFO	108009810.2	Import	263472570.1
HSD	0	Wind	1765200
Total:	122,92,92,344	Tk.	

E-W Interconnector & Import Scenario

Energy Flow from East to West:	KWHr:	0	Import through HVDC C/B Interconnector:	MKWHr:	18.365818	Peak Hr Flow	44.00 MW at 18:00 hrs
Energy Flow from West to East:	KWHr:	49894763.68	Import through Adani C/B Interconnector:	MKWHr:	23.18943017	Peak Hr Flow	318.87 MW at 18:00 hrs
Energy Flow during Peak Demand (W-E):	MW:	2545	Import through Cumilla C/B Interconnector:	MKWHr:	2.34432	Peak Hr Flow	24.00 MW at 18:00 hrs
Maximum Power Flow (W-E):	MW:	2725	Total Import through C/B Interconnector:	MKWHr:	43.89956817	Peak Hr Flow	286.87 MW at 18:00 hrs

Zone-wise Load-shed and Demand Summary (MW) at evening peak Hour (18:00 Hr.)

Zone	Load-Shed	Demand
Dhaka	0	4122
Chattogram	0	1147
Cumilla	0	912
Mymensingh	0	887
Sylhet	0	401
Khulna	0	1271
Barishal	0	308
Rajshahi	0	1018
Rangpur	0	787
Total	0	10853

Status of unavailable Power Plant

Planned S/D			Forced S/D		
SI	Plant Name	Capacity	SI	Plant Name	Capacity
1	Baghabari 100 MW GTPP	100			
2	Barapukuria TPP Unit-2	85			
3	Siddhirgonj 210 MW TPP	115			
Total			Total		
300			0		
Total Unavailable Capacity			300		

Event Summary

Outage Time	Restoration Time	Description of Event	Description of Event
08:06	16:15	Ramganj 132/33kV S/S Transformer-01 LT Scheduled S/D Due to Annual Maintenance	
08:08	14:30	Chhatak 132/33kV S/S Bus-B Scheduled S/D Due to Annual Maintenance Work.	
08:15	16:25	Baghabari-Shahjadpur 132 kV Ckt-1 Scheduled S/D from Shahjadpur 132/33kV end Due to Annual Maintenance	
08:19	13:36	Sirajganj 132/33kV S/S T1-(415) LT Scheduled S/D Due to Annual maintenance work.	
08:20	17:00	Aminbazar-Airport(Old) 230kV Ckt-1 Scheduled S/D from Agargaon 230/132kV end Due to	



Power Grid Bangladesh PLC
National Load Dispatch Center (NLDC)
System Summary Report

Date : 08-12-2025

Annual Maintenance (Dead Line Checking)

08:20	13:35	Sirajganj 132/33kV S/S T1-(415) HT Scheduled S/D Due to Annual maintenance work.	
08:22	16:16	Fenchuganj-Sreemangal 132kV Ckt-1 Scheduled S/D from Sreemongol 132/33kV end Due to For dead line checking work. and from Fenchuganj 230/132/33kV end Due to Annual Maintenance	
08:25		Halishahar-Khulshi 132kV Ckt-2 Scheduled S/D from Khulshi 132/33kV end Due to Deadline checking	
08:25	13:31	Rampur 230/132/33 S/S Khulshi-2 Scheduled S/D Due to Annual line maintenance of Khulshi-02	
08:25	16:42	Chapai 132/33kV S/S T-2 (415T) HT Scheduled S/D Due to Annual Maintenance.	
08:25	16:46	Chapai 132/33kV S/S T-2 (415T) LT Scheduled S/D Due to Annual Maintenance	
08:31	17:33	Natore 132/33kV S/S TR-4 (435 T) LT Scheduled S/D Due to Annual maintenance work	
08:31	17:32	Natore 132/33kV S/S TR-4 (435 T) HT Scheduled S/D Due to Annual maintenance work	
08:31	16:12	Kaliakoir 400/230/132kV S/S Bibiyana1 Scheduled S/D Due to As directed by NLDC.	
08:32	13:22	Barapukuria-Bogura 230 kV Ckt-1 Scheduled S/D from Bogura 230/132kV end.	
08:42	09:43	Chhatak 132/33kV S/S Sunamganj 1 Scheduled S/D Due to Annual Maintence Work.	
08:43	09:44	Chattak-Sunamganj 132 kV Ckt-1 Forced S/D from Sunamganj 132/33kV end Due to Instruction From NLDC	
08:43	16:01	Daudkandi 132/33kV S/S Titas 50 MW Power Plant Line Scheduled S/D Due to Annual maintenance work at Daudkandi Substation	
08:53	17:10	Savar 132/33kV S/S Main Bus-I Scheduled S/D Due to Annual maintenance	
08:53	16:16	Bibiyana-Kaliakoir 400 kV Ckt-1 Scheduled S/D from Bibiana 400/230kV end Due to AM	
08:53	17:05	Aminbazar-Mirpur 132kV Ckt-2 Scheduled S/D from Mirpur 132/33kV end Due to Annual Maintenance	
08:55	17:19	Barapukuria-Bogura 230 kV Ckt-2 Scheduled S/D from Barapukuria 230/132/33kV end Due to Annual maintenance work.	
08:55	17:05	Savar 132/33kV S/S 132kV Manikganj PS-Savar Ckt-1 Scheduled S/D Due to Annual maintenance	
09:00	16:39	Chuadanga-Jhenaidah 132 kV Ckt-1 Scheduled S/D from Chuadanga 132/33kV end Due to Annual Maintenance. and from Jhenaidah 230/132kV end Due to Annual Maintenance	
09:02	16:39	Rahanpur 132/33kV S/S Rahanpur-2 Scheduled S/D	
09:02	16:37	Rahanpur 400/132kV S/S Rahanpur-Chowdala 132 KV Line Ckt-02 Scheduled S/D Due to Annual maintenance	
09:10	11:44	Cumilla(S) 132/33kV S/S TR-1 LT Scheduled S/D Due to 33KV CB Maintenance	22.0MW load interrup.
09:10	11:44	Cumilla(S) 132/33kV S/S TR-1 HT Scheduled S/D Due to 33 Kv CB Maintenance	22.0MW load interrup.
09:10	19:17	Rangpur 132/33kV S/S Rangpur-GTPS Project Work S/D Due to G to G Project	
09:10	17:32	Sreepur 230/132/33kV S/S Sreepur-Ashuganj Ckt-2 Scheduled S/D Due to Annual maintenance work	
09:18	15:17	Brahmanbaria 132/33kV S/S 402T HT Scheduled S/D	
09:23	15:15	Hathazari 230/132/33kV S/S Raojan-02 Scheduled S/D Due to Annual Maintenance work Line	
09:38	15:20	Beanibazar 132/33kV S/S 132 KV BUS-1 Scheduled S/D Due to Annual Maintenance	
09:41	15:26	Madanganj 132/33kV S/S Main Bus Scheduled S/D Due to Annual Maintenance	
09:41	15:26	Madanganj 132/33kV S/S BUS Coupler Scheduled S/D Due to Annual Maintenance	
09:45	10:35	Sunamganj 132/33kV S/S Chhatak-Sunamgonj CKT-2 Forced S/D Due to Instruction From NLDC	
09:56	14:52	Kachua 230/132/33kV S/S TR-1 LT Scheduled S/D Due to Shutdown taken by SPMD ofr several testing .	
09:57	14:51	Kachua 230/132/33kV S/S TR-1 HT Scheduled S/D Due to shutdown taken by SPMD for several testing.	
09:57	15:38	Rangpur 132/33kV S/S T-2 (404T) LT Scheduled S/D Due to Annual Maintenance	
09:58	15:37	Rangpur 132/33kV S/S T-2 (404T) HT Scheduled S/D Due to Annual Maintenance	
10:10	11:36	Barishal 230/132kV S/S T-4 LT Scheduled S/D Due to Work by SPMD	
10:11	11:33	Barishal 230/132kV S/S T-4 HT Scheduled S/D Due to Work by SPMD	



Power Grid Bangladesh PLC
National Load Dispatch Center (NLDC)
System Summary Report

Date : 08-12-2025

10:18	12:21	Beanibazar 132/33kV S/S 132 KV Transformer TR-01 LT Forced S/D Due to Annual Maintenance Bus-1	
10:19	12:19	Beanibazar 132/33kV S/S 132 KV Transformer TR-01 HT Forced S/D Due to Annual Maintenance Bus-1	
10:36	17:16	Mymensingh RPCL-Tangail 132kV Ckt-1 Scheduled S/D from Ghatail 132/33kV end Due to Annual maintenance of 132 KV Main Bus-1 and from Ghatail 132/33kV end Due to Annual maintenance of 132 KV Main Bus-1	
10:38	10:44	Tangail 132/33kV S/S Tr-4 LT Forced S/D Due to Maintenance Work	
10:38	10:44	Tangail 132/33kV S/S Tr-4 HT Forced S/D Due to Maintenance Work	
10:39	14:31	Tangail 132/33kV S/S RPCL-1 Forced S/D Due to maintenance Work	
10:57	17:28	Ghatail 132/33kV S/S T-1 LT Scheduled S/D Due to Annual maintenance of 132 KV Main Bus-1	
10:58	17:26	Ghatail 132/33kV S/S T-1 HT Scheduled S/D Due to Annual maintenance of 132 KV Main Bus-1	
11:01	12:13	Chattak-Sylhet 132 kV Ckt-1 Scheduled S/D from Chhatak 132/33kV end Due to Annual maintenance work. and from Sylhet 132/33kV end Due to Work by Chhatak Grid Sub-Station.	
11:02	17:20	Ghatail 132/33kV S/S Main Bus-1 Scheduled S/D Due to Annual maintenance of 132 KV Main Bus-1	
12:27	14:15	Beanibazar 132/33kV S/S 132KV Transformer TR-02 LT Scheduled S/D Due to Annual Maintenance	
12:27	14:14	Beanibazar 132/33kV S/S 132KV Transformer TR-02 HT Scheduled S/D Due to Annual Maintenance	
14:53	16:31	Kachua 230/132/33kV S/S TR-2 LT Scheduled S/D Due to Relay test.	
14:54	16:30	Kachua 230/132/33kV S/S TR-2 HT Scheduled S/D Due to Relay Test	
	16:15	Bhulta 400/230kV S/S ATR-02 HT is restored.	
	16:36	Barishal-Barishal(N) 132 kV Ckt-2 is restored.	
	16:50	Cox'sbazar-Dohazari 132 kV Ckt-2 is restored.	
	17:09	Gopalganj 132/33kV S/S T1 HT is restored.	
	17:10	Gopalganj 132/33kV S/S T1 LT is restored.	
18:00		Evening Peak Generation is 11195 MW.	
	18:07	Khulna(C)-Noapara 132kV Ckt-2 is restored.	
	18:07	Khulna(C)-Noapara 132kV Ckt-2 is restored.	
	19:12	Bhulta-Ghorasal 230 kV Ckt-1 is restored.	
	19:13	Bhulta-Ghorasal 230 kV Ckt-2 is restored.	
	19:21	Hasnabad 230/132kV S/S AUTO TR-3 HT is restored.	
	19:25	Hasnabad 230/132kV S/S AUTO TR-3 LT is restored.	
21:00		Ashuganj 450 MW CCPP(South) Synchronized with remarks:- ST	
04:00		Minimum generation 7602 MW	
06:20	06:32	Savar 132/33kV S/S T-2 LT Tripped showing Over current relay relays Due to Over current fault due to pbs-3 L-45,L45 feeder fault	
06:20	06:31	Savar 132/33kV S/S T-1 LT Tripped showing Over current relay relays Due to Over current fault due to pbs-3 L-45,L45 feeder fault	
07:06		Sirajganj 132/33kV S/S T4-(445) HT Forced S/D Due to 33 KV Pipubaria CB Remove	10.0MW load interrupt.
07:07		Sirajganj 132/33kV S/S T4-(445) LT Forced S/D Due to 33 KV Pipubaria CB Remove	10.0MW load interrupt.
07:09		Hasnabad 230/132kV S/S AUTO TR-2 LT Scheduled S/D Due to Maintenance	
07:10		Hasnabad 230/132kV S/S AUTO TR-2 HT Scheduled S/D Due to Maintenance	
07:41		Hasnabad 132/33kV S/S 132kV Reserve Bus Scheduled S/D Due to Auto TR-2 Reserve Bus DS Red hot	
07:46		Bhulta-Ghorasal 230 kV Ckt-1 Scheduled S/D from Bhulta 400/230kV end.	
07:47		Bhulta-Ghorasal 230 kV Ckt-2 Scheduled S/D from Bhulta 400/230kV end.	
07:55		Cumilla(S) 132/33kV S/S TR-2 LT Scheduled S/D Due to Annual Maintenance	



Power Grid Bangladesh PLC
National Load Dispatch Center (NLDC)
System Summary Report

Date : 08-12-2025

07:55

Cumilla(S) 132/33kV S/S TR-2 HT Scheduled S/D Due to Annual Maintenance

Sub-Divisional Engineer
Network Operation Division

Executive Engineer
Network Operation Division

Superintendent Engineer
Network Operation Division