



Power Grid Bangladesh PLC
National Load Dispatch Center (NLDC)
System Summary Report

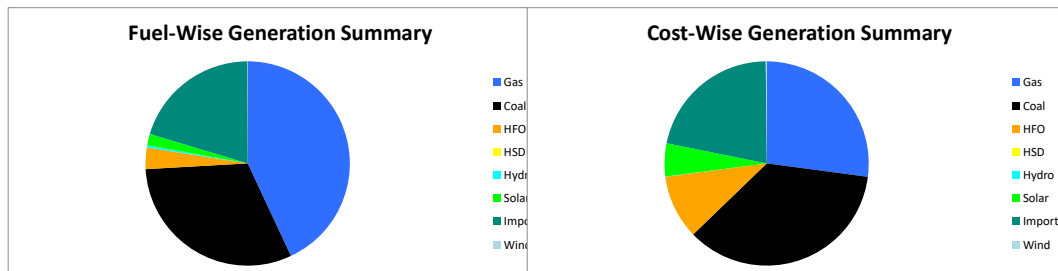
Date : 14-12-2025

Power Supply Scenario

Day Peak Generation	10204.68	MW	12:00 Hr.	Energy Generated	231.50714	MKWHR.
Day Peak Demand	10204.68	MW	12:00 Hr.	Energy Unserverd	0.00000	MKWHR.
Evening Peak Generation	11313.2	MW	18:00 Hr.	Energy Demand	231.50714	MKWHR.
Evening Peak Demand	11313.2	MW	18:00 Hr.	Maximum Temperature	28.10	°C
Minimum Generation of the Day	7490.77	MW	05:00 Hr.	Total Gas Supplied	725.84	MMCFD
Maximum Generation of the Day	11313.2	MW	18:00 Hr.	Production Cost per KWHr	5.57261	Tk.

Zone-wise Generation Summary (MKWHR.)

	Gas	Coal	HFO	HSD	Hydro	Solar	Import	Wind	Total
Dhaka Zone	25.37	0.00	4.20	0.00	0.00	0.19	0.00	0.00	29.76
Chattogram Zone	5.59	20.59	1.06	0.00	0.86	0.15	0.00	0.11	28.36
Cumilla Zone	20.97	0.00	0.95	0.00	0.00	0.45	2.25	0.00	24.61
Mymensingh Zone	1.66	0.00	1.13	0.00	0.00	0.30	0.00	0.00	3.09
Sylhet Zone	18.05	0.00	0.00	0.00	0.00	0.00	0.00	0.00	18.05
Khulna Zone	6.61	22.76	0.13	0.00	0.00	0.49	19.87	0.00	49.86
Barishal Zone	7.92	28.26	0.00	0.00	0.00	0.00	0.00	0.00	36.19
Rajshahi Zone	13.44	0.00	0.00	0.00	0.00	1.33	24.79	0.00	39.56
Rangpur Zone	0.00	0.34	0.41	0.00	0.00	1.28	0.00	0.00	2.03
Total	99.62	71.94	7.88	0.00	0.86	4.19	46.91	0.11	231.51



Production Cost (Tk.)

Fuel	Tk.	Fuel	Tk.
Gas	349445079	Hydro	86400
Coal	460164701.3	Solar	67203591.89
HFO	131370949.4	Import	280274285
HSD	0	Wind	1553376
Total:		129,00,98,382 Tk.	

E-W Interconnector & Import Scenario

Energy Flow from East to West:	KWHR:	0	Import through HVDC C/B Interconnector:	MKWHR:	19.872727	Peak Hr Flow	875.00 MW at 18:00 hrs.
Energy Flow from West to East:	KWHR:	51970236.37	Import through Adani C/B Interconnector:	MKWHR:	24.789818	Peak Hr Flow	1387.00 MW at 18:00 hrs.
low during Peak Demand (W-E):	MW:	2712	Import through Cumilla C/B Interconnector:	MKWHR:	2.24544	Peak Hr Flow	106.00 MW at 18:00 hrs.
Maximum Power Flow (W-E):	MW:	2894	Total Import through C/B Interconnector:	MKWHR:	46.907985	Peak Hr Flow	2368.00 MW at 18:00 hrs.

Zone-wise Load-shed and Demand Summary (MW) at evening peak Hour (18:00 Hr.)

Zone	Load-Shed	Demand
Dhaka	0	4142
Chattogram	0	1242
Cumilla	0	939
Mymensingh	0	875
Sylhet	0	405
Khulna	0	1271
Barishal	0	310
Rajshahi	0	998
Rangpur	0	776
Total	0	10958

Status of unavailable Power Plant

Planned S/D			Forced S/D		
Sl	Plant Name	Capacity	Sl	Plant Name	Capacity
1	Baghabari 100 MW GTPP	100			
2	Barapukuria TPP Unit-2	85			
3	Siddhirgorj 210 MW TPP	115			
Total		300	Total		0
Total Unavailable Capacity			300		

Event Summary

Outage Time	Restoration Time	Description of Event	Description of Event
08:03	15:56	Barishal-Bhandaria 132 kV Ckt-1 Scheduled S/D from Barishal 132/33kV end Due to Annual maintenance.	
08:12	15:13	Kurigram 132/33kV S/S Transformer T-1 (Tr-403T) LT Scheduled S/D Due to Annual Maintenance work	
08:13	15:12	Kurigram 132/33kV S/S Transformer T-1 (Tr-403T) HT Scheduled S/D Due to Annual Maintenance work	
08:14	15:48	Khulna(C)-Noapara 132kV Ckt-1 Scheduled S/D from Khulna (C) end Due to For Annual Maintenance.	
08:15	15:54	Barishal-Bhandaria 132 kV Ckt-1 Scheduled S/D from Bhandaria 132/33kV end Due to Annual maintenance	
08:16	08:43	Kasba 132/33kV S/S Muradnagar-Kasba Ckt-2 Tripped showing Distance relays Due to EF trip,SOTF_21 trip,R,Y,B Phase trip	
08:16	08:42	Muradnagar 132/33kV S/S 132 KV Muradnagar- Kosba Ckt-02 Tripped showing Distance Relay relays Due to Distance Relay operate	7.0MW load interrup.
08:19		Ghorasal-Tongi 230kV Ckt-2 Scheduled S/D from Tongi 230/132/33kV end Due to Shutdown taken by NLDC	
08:19		Ghorasal-Tongi 230kV Ckt-1 Scheduled S/D from Tongi 230/132/33kV end Due to Shutdown taken by NLDC	
08:20	16:07	Bakulia-Sikalbaha 132 kV Ckt-1 Scheduled S/D from Bakulia 132/33kV end Due to Annual Maintenance Bakalia-shikalbaha CKT-01 Dead line checking.	
08:22	20:46	Kaliakoir 400/230/132kV S/S 400/230kV TR1 LT Scheduled S/D Due to Annual Maintenance	



Power Grid Bangladesh PLC
National Load Dispatch Center (NLDC)
System Summary Report

Date : 14-12-2025

08:22	20:46	Kaliakoir 400/230/132kV S/S 400/230kV TR1 HT Scheduled S/D Due to Annual Maintenance	
08:25	17:22	Bog-Sherpur 132/33kV S/S Transformer-2 (414T) LT Scheduled S/D Due to Annual maintenance work	
08:26	17:20	Bog-Sherpur 132/33kV S/S Transformer-2 (414T) HT Scheduled S/D Due to Annual maintenance work	
08:29	15:52	Sirajganj 132/33kV S/S T2-(425) LT Scheduled S/D Due to Annual Maintenance	
08:30	15:51	Sirajganj 132/33kV S/S T2-(425) HT Scheduled S/D Due to Annual Maintenance	
08:30	16:41	Bibiyana-Kaliakoir 400 kV Ckt-2 Forced S/D from Kaliakoir 400/230/132kV end Due to By NLDC and from Bibiana 400/230kV end Due to Death line checking-in	
08:31		Sylhet 225MW CCPP was shutdown due to air filter change work	
08:34	13:59	Shahmirpur-Sikalbaha 132kV Ckt-1 Scheduled S/D from Shahmirpur 132/33kV end Due to Annual Maintenance	
08:34	17:33	Fenchuganj-Sreemangal 132kV Ckt-2 Scheduled S/D from Fenchuganj 230/132/33kV end Due to Annual maintenance work and from Sreemongol 132/33kV end Due to Annual maintenance	
08:35	15:40	Brahmanbaria-Narsinghdi 132 kV Ckt-1 Scheduled S/D from Narshingdi 132/33kV end Due to 132 kV Main Bus -01 shutdown for annual maintenance work.	
08:37	15:40	Brahmanbaria-Narsinghdi 132 kV Ckt-2 Scheduled S/D from Narshingdi 132/33kV end Due to 132 kV Main Bus -01 shutdown for annual maintenance work.	
08:39	15:40	Narshingdi 132/33kV S/S 132 kV Main Bus-1 Scheduled S/D Due to 132 kV Main Bus -01 shutdown for annual maintenance work.	
08:42	14:53	Haripur-Sonargaon 132kV Ckt-1 Scheduled S/D from Sonargaon 132/33kV end Due to Annual maintenance and from Haripur 230/132kV end Due to Annual Dead Line Checking.	
08:47	11:37	Bogura-Natore 132 kV Ckt-2 Scheduled S/D from Bogura 132/33kV end Due to Annual Maintenance and from Natore 132/33kV end Due to Annual maintenance work	
08:56	16:19	Amnura-Rajshahi 132kV Ckt-1 Scheduled S/D from Rajshahi 230/132/33kV end Due to A/M and from Amnura 132/33kV end Due to Annual maintenance.	
09:03	16:40	Kallyanpur 132/33kV S/S GT-1 (132kV) HT Scheduled S/D Due to annual maintenance	
09:03	15:34	Faridpur 132/33kV S/S Transformer-2 LT Scheduled S/D Due to Annual Maintenance	
09:04	15:33	Faridpur 132/33kV S/S Transformer-2 HT Scheduled S/D Due to Annual Maintenance	
09:10	13:55	Sreepur 230/132/33kV S/S 132/33 kV T-2 LT Scheduled S/D Due to Annual Maintenance	
09:10	13:54	Sreepur 230/132/33kV S/S 132/33 kV T-2 HT Scheduled S/D Due to Annual Maintenance	
09:22	10:00	Full interruption (42 MW) occurred under Jigatola grid s/s (DPDC) due to tripping of Kamrangirchar-Jigatola ckt-1 and 2 caused by 33 kV feeder fault at Jigatola grid	
09:27	13:07	BIPTC S/S 10CF23 Scheduled S/D Due to Annual Maintenance	
09:34	13:52	Barapukuria 230/132/33kV S/S 132 KV Bus A Project Work S/D Due to Rangpur circuit -01 Bus-01 upgradation work.	
09:34	12:17	Bashundhara-Tongi 132 kV Ckt-1 Scheduled S/D from Tongi 230/132/33kV end Due to shutdown taken by Bashundhara via NLDC	
09:35	12:13	Jashore 132/33kV S/S T-1 LT Scheduled S/D Due to Annual maintenance	
09:36	12:12	Jashore 132/33kV S/S T-1 HT Scheduled S/D Due to Annual maintenance	
09:37	14:42	Kazla 132/33kV S/S GT-1 LT Scheduled S/D Due to Maintenance purpose	28.0MW load interrupt.
09:47	16:54	Tongi 230/132/33kV S/S T-2 LT Scheduled S/D Due to Annual Maintenance	
09:47	16:50	Tongi 230/132/33kV S/S T-2 HT Scheduled S/D Due to Annual Maintenance	
09:51	13:39	Joypurhat 132/33kV S/S Transformer T-3 (427 T) LT Scheduled S/D Due to Annual Maintenance.	
09:52	13:38	Joypurhat 132/33kV S/S Transformer T-3 (427 T) HT Scheduled S/D Due to Annual Maintenance.	
09:53	16:03	Beanibazar 132/33kV S/S 132KV Transformer TR-02 LT Forced S/D Due to Incomer 2 conductor maintenance	
09:54	16:02	Beanibazar 132/33kV S/S 132KV Transformer TR-02 HT Forced S/D Due to Incomer 2 conductor maintenance	
10:07	16:08	Ghatail 132/33kV S/S T-1 LT Scheduled S/D Due to Annual maintenance work	
10:08	16:05	Ghatail 132/33kV S/S T-1 HT Scheduled S/D Due to Annual maintenance work	
10:22	14:22	Gulshan 132/33kV S/S MT-2 LT Scheduled S/D	
10:25	14:20	Gulshan 132/33kV S/S MT-2 HT Scheduled S/D	
11:33	13:11	Barishal-Barishal(N) 132 kV Ckt-1 Scheduled S/D from Barishal 230/132kV end Due to TCS Failure	
12:00		Day Peak Generation is 10201 MW.	
12:04	13:30	Goalpara 132/33kV S/S T-5 LT Scheduled S/D Due to T5 shutdown due to PT fuse change	
12:05	13:29	Goalpara 132/33kV S/S T-5 HT Scheduled S/D Due to T5 shutdown due to PT fuse change	
12:58		Ashuganj 450 MW CCPP(South) Tripped with remarks:- ST	
14:00		Ashuganj 450 MW CCPP(South) Synchronized	
14:26		Rupsha 800 MW CCPP (NWPGL) GT-1 was sync for test purpose.	



Power Grid Bangladesh PLC
National Load Dispatch Center (NLDC)
System Summary Report

Date : 14-12-2025

- 15:29 Savar 132/33kV S/S 132kV Manikganj PS-Savar Ckt-1 is restored.
- 15:35 18:17 Rajendrapur 132/33kV S/S 132 kV BUS-2 Scheduled S/D Due to For Bus Bar Protection Integration.
- 15:50 Kodda-Rajendrapur 132kV Ckt-1 Project Work S/D from Rajendrapur 132/33kV end Due to Bus Bar Protection Integration.Only Kodda End CB Open.
- 16:43 Khulna (C) S/S Tr-2 415 T HT is restored.
- 16:44 Khulna (C) S/S Tr-2 415 T LT is restored.
- 16:47 Bhulta-Rampura 230 kV Ckt-3 is restored.
- 16:48 Bhulta-Rampura 230 kV Ckt-4 is restored.
- 17:00 Cumilla(S) 132/33kV S/S TR-4 HT is restored.
- 17:00 Cumilla(S) 132/33kV S/S TR-4 LT is restored.
- 17:18 Khulna (C) S/S Tr-2 415 T LT Forced S/D Due to maybe PT problem
- 17:19 Khulna (C) S/S Tr-2 415 T HT Forced S/D Due to maybe PT problem
- 17:38 Barapukuria unit-1 was synchronized.
- 17:40 Hathazari-Kaptai circuit-2 is switched.
- 17:54 Maniknagar-Siddhirganj 230kV Ckt-1 is restored.
- 18:00 Evening Peak Generation: 11313 MW.
- 18:04 Kaptai Unit-4 synchronized.
- 18:24 BSRM-Cumilla(N) 230 kV Ckt-1 is restored.
- 18:26 Korerhat-Feni 230kV circuit-1 was switched on for the first time at 18:26 hrs.
- 18:42 Korerhat-Feni 230kV circuit-2 was switched on for the first time.
- 19:15 Korerhat-BSRMI 230kV circuit-1 was switched on for the first time.
- 19:26 Ashuganj (South) 360 MW CCPP ST was sync.
- 19:26 Ashuganj 450 MW CCPP(South) Synchronized with remarks:- ST
- 19:32 Korerhat-BSRMI 230kV circuit-2 was switched on for the first time.
- 21:51 Kaptai-Chandroghona circuits-1 and -2 were switched on.
- 22:00 Hathazari-Kaptai circuit-1 is charged from Hathazari Substation.
- 01:04 Mirsorai 230/33kV S/S TR-2, 728T LT Scheduled S/D Due to annual maintenance
- 03:07 Mirsorai 230/33kV S/S TR-1, 718T HT is restored.
- 04:00 Minimum Generation: 7627 MW.
- 07:34 Bhulta 400/230kV S/S 400kV Bus-1 Scheduled S/D
- 07:45 Maniknagar 132/33kV S/S Motijheel Ckt-2 Scheduled S/D Due to Annual Maintenance.

Sub-Divisional Engineer
Network Operation Division

Executive Engineer
Network Operation Division

Superintendent Engineer
Network Operation Division