



**Power Grid Bangladesh PLC**  
**National Load Dispatch Center (NLDC)**  
**System Summary Report**

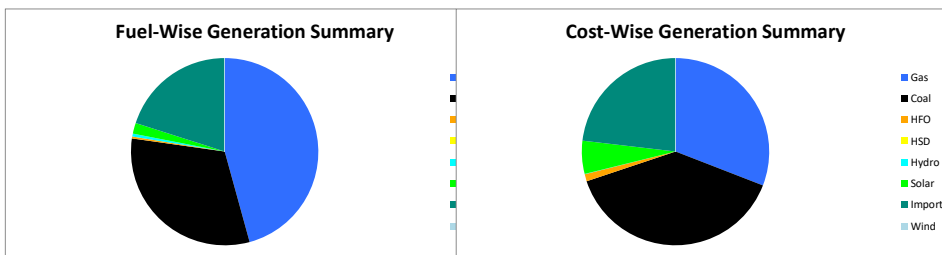
Date : 16-12-2025

**Power Supply Scenario**

Day Peak Generation	8685.24	MW	12:00 Hr.	Energy Generated	204.01445	MKWHr.
Day Peak Demand	8685.24	MW	12:00 Hr.	Energy Unserviced	0.00000	MKWHr.
Evening Peak Generation	9298	MW	18:00 Hr.	Energy Demand	204.01445	MKWHr.
Evening Peak Demand	9298	MW	18:00 Hr.	Maximum Temperature	27.20	°C
Minimum Generation of the Day	7467.5	MW	05:00 Hr.	Total Gas Supplied	667.45	MMCFD
Maximum Generation of the Day	9346.54	MW	13:00 Hr.	Production Cost per KWHR	5.18189	Tk.

**Zone-wise Generation Summary (MKWHr.)**

Zone	Gas	Coal	HFO	HSD	Hydro	Solar	Import	Wind	Total
Dhaka Zone	21.87	0.00	0.02	0.00	0.00	0.18	0.00	0.00	22.06
Chattogram Zone	5.37	18.69	0.00	0.00	0.98	0.13	0.00	0.00	25.16
Cumilla Zone	21.47	0.00	0.00	0.00	0.00	0.33	2.17	0.00	23.97
Mymensingh Zone	2.09	0.00	0.74	0.00	0.00	0.26	0.00	0.00	3.09
Sylhet Zone	16.76	0.00	0.00	0.00	0.00	0.05	0.00	0.00	16.81
Khulna Zone	5.39	19.76	0.00	0.00	0.00	0.46	17.50	0.00	43.11
Barishal Zone	6.52	24.54	0.00	0.00	0.00	0.00	0.00	0.00	31.06
Rajshahi Zone	13.83	0.00	0.00	0.00	0.00	1.18	21.22	0.00	36.23
Rangpur Zone	0.00	1.31	0.00	0.00	0.00	1.20	0.00	0.00	2.52
<b>Total</b>	<b>93.30</b>	<b>64.30</b>	<b>0.76</b>	<b>0.00</b>	<b>0.98</b>	<b>3.79</b>	<b>40.88</b>	<b>0.00</b>	<b>204.01</b>



**Production Cost (Tk.)**

Fuel	Tk.	Fuel	Tk.
Gas	326401200.2	Hydro	97600
Coal	412614497.6	Solar	60591448.84
HFO	13153894.56	Import	244251501.7
HSD	0	Wind	70608
<b>Total:</b>	<b>105,71,80,750</b>	<b>Total:</b>	<b>7,06,008</b>

**E-W Interconnector & Import Scenario**

Energy Flow from East to West:	KWHr:	0	Import through HVDC C/B Interconnector:	MKWHr:	17.498181	Peak Hr Flow	59.00 MW at 18:00 hrs
Energy Flow from West to East:	KWHr:	35727490.92	Import through Adani C/B Interconnector:	MKWHr:	21.218181	Peak Hr Flow	28.00 MW at 18:00 hr
Flow during Peak Demand (W-E):	MW:	2059	Import through Cumilla C/B Interconnector:	MKWHr:	2.16672	Peak Hr Flow	08.00 MW at 18:00 hrs
Maximum Power Flow (W-E):	MW:	2383	Total Import through C/B Interconnector:	MKWHr:	40.883082	Peak Hr Flow	95.00 MW at 18:00 hr

**Zone-wise Load-shed and Demand Summary (MW) at evening peak Hour (18:00 Hr.)**

Zone	Load-Shed	Demand
Dhaka	0	2986
Chattogram	0	779
Cumilla	0	863
Mymensingh	0	824
Sylhet	0	376
Khulna	0	1170
Barishal	0	295
Rajshahi	0	963
Rangpur	0	700
<b>Total</b>	<b>0</b>	<b>8956</b>

**Status of unavailable Power Plant**

Planned S/D			Forced S/D		
Sl	Plant Name	Capacity	Sl	Plant Name	Capacity
1	Baghabari 100 MW GTPP	100			
2	Barapukuria TPP Unit-2	85			
3	Siddhirgonj 210 MW TPP	115			
	<b>Total</b>	<b>300</b>		<b>Total</b>	<b>0</b>
<b>Total Unavailable Capacity</b>			<b>300</b>		

**Event Summary**

Outage Time	Restoration Time	Description of Event	Description of Event
08:50		Matarbari- Bashkhali 400kV ckt-2 was shut down.	
12:00		Day Peak Generation: 8682 MW.	
14:49		Ashuganj 450 MW CCGP(North) Synchronized with remarks:- GT	
15:14		Ashuganj 450 MW CCGP(North) Tripped with remarks:- GT	
15:14		Ashuganj 450 MW CCGP(North) Shutdown	
15:53		Summit Meghnaghat CCGP-2 ST tripped due to problem with the diverter damper.	



Power Grid Bangladesh PLC  
National Load Dispatch Center (NLDC)  
System Summary Report

Date : 16-12-2025  
15:55 Niamatpur 132/33kV S/S Transformer-3(426T) HT is restored.  
16:15 Niamatpur 132/33kV S/S Transformer-3(426T) LT is restored.  
18:00 Evening Peak Generation is 9298 MW.  
18:02 Meghnaghat CCPP(Summit)-2 Tripped with remarks:- GT  
01:20 Summit Bibiyana-2 CCPP was shutdown due to maintenance purpose  
02:35 Ashuganj 450 MW CCPP(South) Tripped with remarks:- Plant  
02:35 Ashuganj (South) 360 MW CCPP tripped due to tripping of a low-voltage transformer  
05:00 Minimum generation 6766 MW  
06:35 Meghnaghat CCPP(Summit)-2 Synchronized with remarks:- GT  
07:19 Hasnabad-Keraniganj 230kV Ckt-2 Scheduled S/D from Keraniganj 230/132/33kV end Due to Annual Maintenance and from Hasnabad 230/132kV end Due to annual maintenance  
07:26 Barishal(N)-Madaripur 132 kV Ckt-1 Scheduled S/D from Madaripur 132/33kV end Due to Annual Maintenance and from Barishal 230/132kV end Due to Annual maintenance work  
07:30 Saidpur 132/33kV S/S TR-5 (434T) LT Project Work S/D Due to Project work  
07:31 Saidpur 132/33kV S/S TR-5 (434T) HT Project Work S/D Due to Project work  
07:44 Meghnaghat CCPP(Summit)-2 Synchronized with remarks:- ST  
07:47 Saidpur 132/33kV S/S BUS B Project Work S/D Due to Project work  
08:00 Kachua 230/132/33kV S/S TR-1 LT Scheduled S/D Due to Annual maintenance

Sub-Divisional Engineer  
Network Operation Division

Executive Engineer  
Network Operation Division

Superintendent Engineer  
Network Operation Division