



**Power Grid Bangladesh PLC
National Load Dispatch Center (NLDC)
System Summary Report**

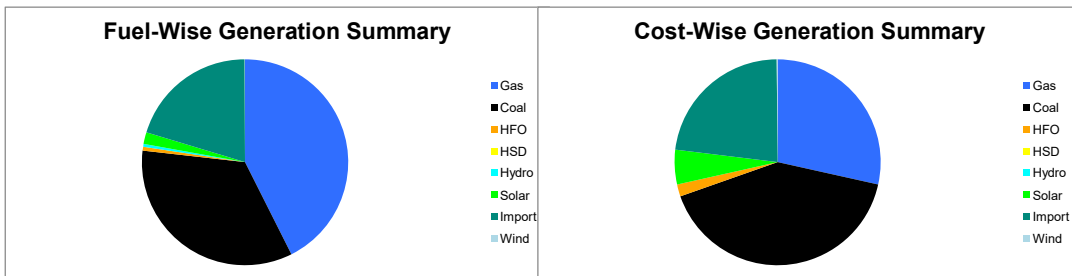
Date : 15-12-2023

Power Supply Scenario

Day Peak Generation	9356.52	MW	12:00 Hr.	Energy Generated	211.28152	MKWHr.
Day Peak Demand	9356.52	MW	12:00 Hr.	Energy Unservvered	0.00000	MKWHr.
Evening Peak Generation	9621.5	MW	19:00 Hr.	Energy Demand	211.28152	MKWHr.
Evening Peak Demand	9621.5	MW	19:00 Hr.	Maximum Temperature	29.20	°C
Minimum Generation of the Day	7651	MW	04:00 Hr.	Total Gas Supplied	678.38	MMCFD
Maximum Generation of the Day	9955.06	MW	13:00 Hr.	Production Cost per KWHr	5.33658	Tk.

Zone-wise Generation Summary (MKWHr.)

	Gas	Coal	HFO	HSD	Hydro	Solar	Import	Wind	Total
Dhaka Zone	22.74	0.00	0.08	0.00	0.00	0.17	0.00	0.00	23.00
Chattogram Zone	6.04	20.53	0.06	0.00	0.97	0.14	0.00	0.11	27.85
Cumilla Zone	20.08	0.00	0.06	0.00	0.00	0.43	2.17	0.00	22.74
Mymensingh Zone	2.67	0.00	0.99	0.00	0.00	0.27	0.00	0.00	3.93
Sylhet Zone	11.26	0.00	0.00	0.00	0.00	0.05	0.00	0.00	11.31
Khulna Zone	6.37	21.15	0.00	0.00	0.00	0.43	17.43	0.00	45.38
Barishal Zone	7.00	29.36	0.00	0.00	0.00	0.00	0.00	0.00	36.37
Rajshahi Zone	13.77	0.00	0.00	0.00	0.00	1.15	23.21	0.00	38.13
Rangpur Zone	0.00	1.32	0.04	0.00	0.00	1.20	0.00	0.00	2.56
Total	89.93	72.36	1.23	0.00	0.97	3.86	42.81	0.11	211.28



Production Cost (Tk.)

Fuel	Tk.	Fuel	Tk.
Gas	320884958.1	Hydro	96800
Coal	464470906.2	Solar	61074440.38
HFO	21314772.34	Import	258012479.5
HSD	0	Wind	1666348.8
Total:		112,75,20,705 Tk.	

E-W Interconnector & Import Scenario

Energy Flow from East to West:	KWHr:	0	Import through HVDC C/B Interconnector:	MKWHr:	17.433454	Peak Hr Flow	306.00 MW at 19:00 hrs.
Energy Flow from West to East:	KWHr:	50698109.1	Import through Adani C/B Interconnector:	MKWHr:	23.208836	Peak Hr Flow	327.00 MW at 19:00 hrs.
Power during Peak Demand (W-E):	MW:	2829	Import through Cumilla C/B Interconnector:	MKWHr:	2.17152	Peak Hr Flow	98.00 MW at 19:00 hrs.
Maximum Power Flow (W-E):	MW:	2852	Total Import through C/B Interconnector:	MKWHr:	42.81381	Peak Hr Flow	231.00 MW at 19:00 hrs.

Zone-wise Load-shed and Demand Summary (MW) at evening peak Hour (19:00 Hr.)

Zone	Load-Shed	Demand
Dhaka	0	3255
Chattogram	0	1106
Cumilla	0	857
Mymensingh	0	780
Sylhet	0	350
Khulna	0	1108
Barishal	0	292
Rajshahi	0	892
Rangpur	0	633
Total	0	9273

Status of unavailable Power Plant

Planned S/D			Forced S/D		
Sl	Plant Name	Capacity	Sl	Plant Name	Capacity
1	Baghabari 100 MW GTPP	100			
2	Barapukuria TPP Unit-2	85			
3	Siddhirgonj 210 MW TPP	115			
		Total			Total
		300			0
Total Unavailable Capacity			300		

Event Summary

Outage Time	Restoration Time	Description of Event	Description of Event
08:01	09:26	Chhatak 132/33kV S/S T-3 LT Scheduled S/D Due to Shutdown for 132kV GCB hydraulic oil leakage problem.	
08:02	09:26	Chhatak 132/33kV S/S T-3 HT Scheduled S/D Due to Shutdown for hydraulic oil leakage problem.	
08:05	16:32	Barishal(N)-Madaripur 132 kV Ckt-1 Scheduled S/D from Madaripur 132/33kV end Due to Annual Maintenance and from Barishal 230/132kV end Due to annual maintenance work	
08:06	14:36	Mymensingh 132/33kV S/S Bus B Scheduled S/D	
08:20	09:39	Saidpur 132/33kV S/S TR-3 (424T) HT Forced S/D Due to 33kV Bus COUPLER DS maintenance	
08:20	09:39	Saidpur 132/33kV S/S TR-3 (424T) LT Forced S/D	



**Power Grid Bangladesh PLC
National Load Dispatch Center (NLDC)
System Summary Report**

Date : 15-12-2020

08:20	09:40	Saidpur 132/33kV S/S TR-2 (404T) HT Forced S/D Due to 33kv Bus COUPLER DS maintenance	
08:20	10:15	Saidpur 132/33kV S/S TR-2 (404T) LT Forced S/D	
08:21		Baghabari-Ullahpara 132 kV Ckt-1 Forced S/D from Ullahpara 132/33kV end Due to Project work	
08:24	16:43	Bheramara(GK) 132/33kV S/S TR-1 HT Scheduled S/D Due to Annual Maintenance	38.0MW load interrupt.
08:24	16:48	Bheramara(GK) 132/33kV S/S TR-2 LT Scheduled S/D Due to Annual Maintenance	38.0MW load interrupt.
08:25	16:49	Bheramara(GK) 132/33kV S/S TR-3 LT Scheduled S/D Due to Annual Maintenance	38.0MW load interrupt.
08:25	16:50	Bheramara(GK) 132/33kV S/S TR-4 LT Scheduled S/D Due to Annual Maintenance	0.08MW load interrupt.
08:26	16:44	Bheramara(GK) 132/33kV S/S TR-2 HT Scheduled S/D Due to Annual Maintenance	12.0MW load interrupt.
08:26	16:47	Bheramara(GK) 132/33kV S/S TR-1 LT Scheduled S/D Due to Annual Maintenance p	12.0MW load interrupt.
08:27	16:45	Bheramara(GK) 132/33kV S/S TR-3 HT Scheduled S/D Due to Annual Maintenance	12.0MW load interrupt.
08:27	16:45	Bheramara(GK) 132/33kV S/S TR-3 HT Scheduled S/D Due to Annual Maintenance	12.0MW load interrupt.
08:27	16:46	Bheramara(GK) 132/33kV S/S TR-4 HT Scheduled S/D Due to Annual Maintenance	1.0MW load interrupt.
08:28	16:40	Bheramara-GK 132kV Ckt-2 Scheduled S/D from Bheramara(GK) 132/33kV end Due to Annual Maintenance and from Bheramara 230/132kV end Due to Anula Maintenance	37.0MW load interrupt. Bheramara(GK) 132/33kV end and 60.0MW load interrupt. Bheramara 230/132kV end
08:29	14:51	Madunaghat 400/230kV S/S ATR-3 7206T LT Scheduled S/D Due to Annual maintenance	
08:29	14:50	Madunaghat 400/230kV S/S ATR-3 7206T HT Scheduled S/D Due to Annual Maintenance	
08:31		Chowmuhani-Feni 132 kV Ckt-2 Scheduled S/D from Chowmuhani 132/33kV end Due to Tower ERS	
08:36	15:18	Munshiganj 132/33kV S/S Transformer-2 HT Scheduled S/D Due to Transformer -02 Annual maintenance	
08:36	15:23	Munshiganj 132/33kV S/S Transformer-1 LT Scheduled S/D Due to Transformer -02 Annual maintenance	
08:37	16:42	Bheramara-GK 132kV Ckt-1 Scheduled S/D from Bheramara 230/132kV end Due to Anula Maintenance	
08:42	16:10	Sonargaon 132/33kV S/S Tr-1 LT Scheduled S/D Due to Annual Maintenance	20.0MW load interrupt.
08:44	16:08	Sonargaon 132/33kV S/S Tr-1 HT Scheduled S/D Due to Anual Maintenance	20.0MW load interrupt.
08:55		Aminbazar-Meghnaghat 400kV Ckt-1 Scheduled S/D from Aminbazar 400/230/132kV end Due to Deadline Checking and from Meghnaghat 400/230kV end Due to Requested by NLDC	
08:57	15:47	Siddhirganj 132/33kV S/S T-1 LT Scheduled S/D Due to Shutdown have taken for annual maintenance work.	
08:58	15:47	Siddhirganj 132/33kV S/S T-1 HT Scheduled S/D Due to Shutdown have taken for annual maintenance work.	
09:03	15:25	Niamatpur 132/33kV S/S 132kV Rahanpur Ckt-1 Scheduled S/D Due to Annual maintenance	
09:06	15:23	Rahanpur 400/132kV S/S Rahanpur-Niamatpur 132 KV Line Ckt-01 Scheduled S/D Due to Annual maintenance	
09:57		Bhulta-Ghorasal 230 kV Ckt-2 Scheduled S/D from Bhulta 400/230kV end.	
10:10	18:34	Kodda(300MW)-Tongi 230kV Ckt-1 Scheduled S/D from Tongi 230/132/33kV end.	
10:51	14:52	Kishoreganj-Mymensingh 132kV Ckt-1 Project Work S/D from Mymensingh 132/33kV end. and from Kishoreganj 132/33kV end Due to For mym side work	
11:07		Chowmuhani-Feni 132 kV Ckt-2 Scheduled S/D from Daganbhuiyan 132/33kV end Due to Shutdown taken by Chowmuhani S/S for maintenance purpose	
12:00		Day peak generation 9351 MW	
12:33		Bheramara P/S-Ishurdi 132 kV Ckt-1 is restored.	



**Power Grid Bangladesh PLC
National Load Dispatch Center (NLDC)
System Summary Report**

Date : 15-12-2020

12:34 Bheramara P/S-Ishurdi 132 kV Ckt-2 is restored.

14:42 Kalurghat 132/33kV S/S TRFO-02(516T) HT is restored.

16:04 16:22 Shahjibazar 132/33kV S/S SPCL 86 MW Tripped showing Lock out Realy relays Due to Lightning Arrester Blast at 86MW Plant.

16:14 Keranigonj 230/132/33kV S/S ATR-1 HT is restored.

16:15 Keranigonj 230/132/33kV S/S ATR-1 LT is restored.

18:08 Ashuganj-Ghorasal 132kV Ckt-2 is restored.

19:00 Evening peak generation: 9621 MW

20:00 Sirajgonj 225MW CCPP Unit-1 GT Ready with remarks:- None

20:00 Sirajgonj 225MW CCPP Unit-1 ST Ready with remarks:- None

00:07 Ashuganj 450 MW CCPP(North) Synchronized with remarks:- GT

02:58 Ashuganj 450 MW CCPP(South) Shutdown with remarks:- GT

05:00 Minimum Generation: 7054 MW.

05:10 Matarbari 2*600 MW (CPGCBL) Synchronized with remarks:- U1

05:41 Ashuganj 450 MW CCPP(North) Shutdown with remarks:- GT

07:34 Keranigonj 230/132/33kV S/S ATR-1 LT Scheduled S/D Due to Annual maintenance work.

07:35 Keranigonj 230/132/33kV S/S ATR-1 HT Scheduled S/D Due to Annual maintenance work.

07:39 Barishal 132/33kV S/S 132 kv Summit power Scheduled S/D Due to Due to Changing Cable Pot Head at SBPL Power Evacuation Line

Sub-Divisional Engineer
Network Operation Division

Executive Engineer
Network Operation Division

Superintendent Engineer
Network Operation Division