



Power Grid Bangladesh PLC
National Load Dispatch Center (NLDC)
System Summary Report

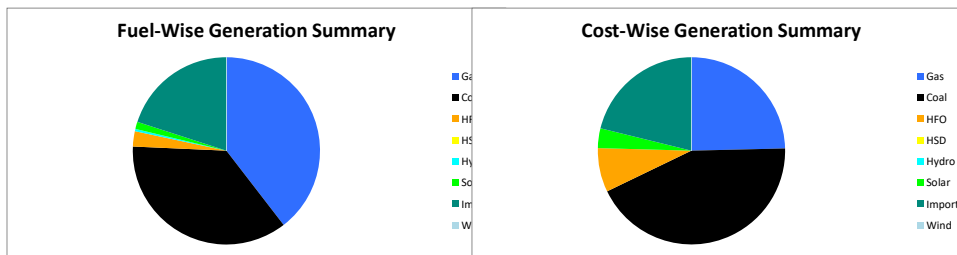
Date : 20-12-2025

Power Supply Scenario

Day Peak Generation	9853.67	MW	12:00 Hr.	Energy Generated	223.24378	MKWHr.
Day Peak Demand	9853.67	MW	12:00 Hr.	Energy Unreserved	0.00000	MKWHr.
Evening Peak Generation	10983.8	MW	18:00 Hr.	Energy Demand	223.24378	MKWHr.
Evening Peak Demand	10983.8	MW	18:00 Hr.	Maximum Temperature	27.50	°C
Minimum Generation of the Day	7054.38	MW	05:00 Hr.	Total Gas Supplied	677.32	MMCFD
Maximum Generation of the Day	10983.8	MW	18:00 Hr.	Production Cost per KWHr	5.64370	Tk.

Zone-wise Generation Summary (MKWHr.)

	Gas	Coal	HFO	HSD	Hydro	Solar	Import	Wind	Total
Dhaka Zone	23.32	0.00	2.66	0.00	0.00	0.13	0.00	0.00	26.10
Chattogram Zone	5.75	27.08	0.84	0.00	0.97	0.15	0.00	0.01	34.81
Cumilla Zone	19.22	0.00	0.96	0.00	0.00	0.29	2.26	0.00	22.74
Mymensingh Zone	1.95	0.00	0.95	0.00	0.00	0.23	0.00	0.00	3.13
Sylhet Zone	10.98	0.00	0.00	0.00	0.00	0.05	0.00	0.00	11.03
Khulna Zone	6.54	22.98	0.00	0.00	0.00	0.34	17.61	0.00	47.47
Barishal Zone	6.92	29.36	0.00	0.00	0.00	0.00	0.00	0.00	36.29
Rajshahi Zone	13.55	0.00	0.06	0.00	0.00	0.65	24.78	0.00	39.04
Rangpur Zone	0.00	1.41	0.36	0.00	0.00	0.87	0.00	0.00	2.63
Total	88.23	80.83	5.84	0.00	0.97	2.71	44.65	0.01	223.24



Production Cost (Tk.)

Fuel	Tk.	Fuel	Tk.
Gas	310215953.1	Hydro	97200
Coal	544634373.9	Solar	43359871.25
HFO	95679196.58	Import	265750741.6
HSD	0	Wind	183580.8
Total:	125,99,20,917		Tk.

E-W Interconnector & Import Scenario

Energy Flow from East to West:	KWHr:	0	Import through HVDC C/B Interconnector:	MKWHr:	17.610909	Peak Hr Flow	06.00 MW at 18:00 hrs
Energy Flow from West to East:	KWHr:	52177872.74	Import through Adani C/B Interconnector:	MKWHr:	24.777396	Peak Hr Flow	365.00 MW at 18:00 hrs
Energy during Peak Demand (W-E):	MW:	2666	Import through Cumilla C/B Interconnector:	MKWHr:	2.26176	Peak Hr Flow	18.00 MW at 18:00 hrs
Maximum Power Flow (W-E):	MW:	2818	Total Import through C/B Interconnector:	MKWHr:	44.650065	Peak Hr Flow	289.00 MW at 18:00 hrs

Zone-wise Load-shed and Demand Summary (MW) at evening peak Hour (18:00 Hr.)

Zone	Load-Shed	Demand
Dhaka	0	4038
Chattogram	0	1229
Cumilla	0	909
Mymensingh	0	860
Sylhet	0	389
Khulna	0	1236
Barishal	0	310
Rajshahi	0	959
Rangpur	0	759
Total	0	10689

Status of unavailable Power Plant

Planned S/D			Forced S/D		
Sl	Plant Name	Capacity	Sl	Plant Name	Capacity
1	Baghabari 100 MW GTPP	100			
2	Barapukuria TPP Unit-2	85			
3	Siddhirgonj 210 MW TPP	115			
Total		300	Total		0
Total Unavailable Capacity			300		

Event Summary

Outage Time	Restoration Time	Description of Event	Description of Event
08:11	16:14	Barishal(N)-Madaripur 132 kV Ckt-1 Scheduled S/D from Barishal 230/132kV end Due to annual maintenance work and from Madaripur 132/33kV end Due to Annual Maintenance	
08:11	16:14	Barishal(N)-Madaripur 132 kV Ckt-1 Scheduled S/D from Barishal 230/132kV end Due to annual maintenance work and from Madaripur 132/33kV end Due to Annual Maintenance	
08:11	16:14	Barishal(N)-Madaripur 132 kV Ckt-1 Scheduled S/D from Barishal 230/132kV end Due to annual maintenance work and from Madaripur 132/33kV end Due to Annual Maintenance	



Power Grid Bangladesh PLC
National Load Dispatch Center (NLDC)
System Summary Report

Date	Time	Description
08:15	16:28	Ishurdi-Pabna 132kV ckt Scheduled S/D from Pabna 132/33kV end Due to Annual Maintenance. and from Ishurdi 132/33kVend.
08:22		Barapukuria-Rangpur 132 kV Ckt-2 Project Work S/D from Barapukuria 230/132/33kV end Due to Reconductoring work for capacity upgradation and from Rangpur 132/33kV end Due to Conductor Re-Conducting
08:22	17:43	C.nawabganj-Rajshahi 132 kV Ckt-1 Scheduled S/D from Chapai 132/33kV end Due to Annual Maintenance. and from Rajshahi 230/132/33kV end Due to Annual Maintenance.
08:30	09:45	Aminbazar-Airport(Old) 230kV Ckt-2 Scheduled S/D from Agargaon 230/132kV end Due to Annual maintenance.
08:36		Ashuganj 450 MW CCP(P(South) Synchronized with remarks:- GT
08:41	16:16	Shahjibazar-Sreemangal 132kV Ckt-1 Scheduled S/D from Sreemongol 132/33kV end Due to Annual Maintenance works. and from Shahjibazar 132/33kV end Due to Shutdown for annual maintenance.
08:43	15:38	Bakulia-Khulshi 132 kV Ckt-1 Scheduled S/D from Bakulia 132/33kV end Due to Annual Maintenance
08:50	15:51	Kodda 132/33kV S/S Bus-2 Scheduled S/D Due to Annual maintenance
08:54	18:26	Chowmuhani 132/33kV S/S TR3-435T LT Scheduled S/D Due to Annual Maintenance
08:55	18:26	Chowmuhani 132/33kV S/S TR3-435T HT Scheduled S/D Due to Annual Maintenance
08:56	16:58	Kaliakoir 400/230/132kV S/S 400/230kV TR2 LT Scheduled S/D Due to Annual Maintenance
08:56	16:58	Kaliakoir 400/230/132kV S/S 400/230kV TR2 HT Scheduled S/D Due to Annual maintenance
09:06	09:48	Kodda 132/33kV S/S Summit 149 MW PS Scheduled S/D Due to 132kV Bus 2 annual maintenance
09:06	14:54	Sirajganj 132/33kV S/S T4-(445) LT Scheduled S/D Due to Annual Maintenance
09:06	14:54	Sirajganj 132/33kV S/S T4-(445) HT Scheduled S/D Due to Annual Maintenance
09:11	16:51	Bogura 400/230kV S/S ATR-02 LT Scheduled S/D Due to Annual maintenance.
09:12	16:51	Bogura 400/230kV S/S ATR-02 HT Scheduled S/D Due to Annual maintenance.
09:21		Ashuganj-Ghorasal 132kV Ckt-2 Scheduled S/D from Ashuganj 230/132/33kV end Due to Shutdown by PGB OFCN
09:24	14:31	Jashore 132/33kV S/S T-3 LT Scheduled S/D Due to Annual Maintenance
09:24	14:30	Jashore 132/33kV S/S T-3 HT Scheduled S/D Due to Annual Maintenance
09:29	11:15	Cumilla(N) 230/132/33kV S/S 132KV T-04 LT Scheduled S/D Due to Tandelta Test
09:29	11:15	Cumilla(N) 230/132/33kV S/S 132KV T-04 HT Scheduled S/D Due to Tandelta Test
09:42		KSRM 132/33kV S/S Transformer-02 HT Scheduled S/D Due to 33 kV Bus-02 Emergency Maintenance
09:48	10:35	Kodda 132/33kV S/S RPCL 100 MW PS Scheduled S/D Due to 132kV Bus 2 Annual maintenance
09:59	15:08	Haripur 230/132kV S/S 132kV Main Bus Sec-1 Scheduled S/D Due to Annual Maintenance
09:59	15:53	Mahasthangar-Palashbari 132kV Ckt-1 Forced S/D from Palashbari 132/33kV end. and from Mahasthangarh 132/33kV end Due to Annual maintenance
10:04	17:54	Chowmuhani 132/33kV S/S HFPL line Project Work S/D Due to Bypass conductor installment in the area of medical.
10:06	22:24	Kodda(300MW)-Tongi 230kV Ckt-1 Scheduled S/D from Tongi 230/132/33kV end Due to Loop changing work
10:16	15:34	Haripur 230/132kV S/S 132KV Bhulta-2 Scheduled S/D Due to Bus DS maintenance
10:20	16:55	Sonargaon 132/33kV S/S BUS A Forced S/D Due to Bashundhara line DS Maintenance
10:29	15:09	Aminbazar-Manikgonj PP 132kV Ckt-1 Scheduled S/D from Aminbazar 400/230/132kV end Due to Deadline checking by Savar Grid S/S
10:35	11:58	Kodda-Rajendrapur 132kV Ckt-1 Scheduled S/D from Kodda 132/33kV end Due to 132kV bus 2 maintenance
10:35	11:58	Kodda-Rajendrapur 132kV Ckt-2 Scheduled S/D from Kodda 132/33kV end Due to 132kV bus 2 maintenance
11:26	15:06	Cumilla(N) 230/132/33kV S/S 132KV T-05 LT Scheduled S/D Due to Tandelta test
11:26	15:06	Cumilla(N) 230/132/33kV S/S 132KV T-05 HT Scheduled S/D Due to Tandelta test
	11:54	Keranigonj 230/132/33kV S/S ATR-1 HT is restored.



Power Grid Bangladesh PLC
National Load Dispatch Center (NLDC)
System Summary Report

Date : 20-12-2025

11:55	Keranigonj 230/132/33kV S/S ATR-1 LT is restored.	
11:55	Keranigonj 230/132/33kV S/S ATR-1 LT is restored.	
12:00	Day peak generation 9849 MW	
12:20	12:58 Kodda 132/33kV S/S Tr-2 (416T) LT Scheduled S/D Due to Annual maintenance	
12:21	12:54 Kodda 132/33kV S/S Tr-2 (416T) HT Scheduled S/D Due to A/M	
12:55	13:15 Kodda 132/33kV S/S Tr-4 (436T) LT Scheduled S/D Due to A/M	
12:55	13:15 Kodda 132/33kV S/S Tr-4 (436T) HT Scheduled S/D Due to A/M	
13:18	13:27 Kabirpur -Kodda 132kV Ckt-2 Tripped from Kabirpur 132/33kV end showing Backup protection relay operated relays Due to Over current	140.0MW load interrup. Kabirpur 132/33kV end
14:35	14:58 Kodda 132/33kV S/S Tr-5 (446T) LT Scheduled S/D Due to A/M	
14:35	14:58 Kodda 132/33kV S/S Tr-5 (446T) HT Scheduled S/D Due to AM	
18:08	SS Power Bashkhali Unit-1 was synchronized	
	18:14 Aminbazar-Meghnaghat 400kV Ckt-1 is restored.	
19:06	Around 65 MW interruption occurred from 19:06 hrs. to 19:29 hrs. under Ullon grid s/s (DPDC) due to tripping of Rampura-Ullon ckt-1 and Ullon-Dhanmondi ckt-1 showing distance (zone-1, Blue phase) relay caused by 132 kV circuit breaker blast at Ullon end. Now Ullon is taking load through Rampura-Ullon ckt-2.	
19:08	20:43 Rampura-Ullon-2 132kV Ckt-1 Tripped from Rampura 230/132kV end showing Distance protection 21.Z1 (BN) relays Due to No	
19:37	Moghbarar-Rampura 132kV Ckt-1 Forced S/D from Rampura 230/132kV end Due to S/D Taken by NLDC	
	21:00 Jhenaidah 230/132kV S/S Transformer- 2 HT is restored.	
	21:03 Jhenaidah 230/132kV S/S Transformer- 2 LT is restored.	
21:36	Khulna(C)-Noapara 132kV Ckt-1 Forced S/D from Khulna (C) end Due to ALDC recommendation.	
21:36	Khulna(C)-Noapara 132kV Ckt-2 Forced S/D from Khulna (C) end Due to ALDC recommendation.	
03:57	Ashuganj 450 MW CCPP(North) Synchronized with remarks:- GT	
03:57	Ashuganj North CCPP GT was sync.	
05:58	Ashuganj 450 MW CCPP(South) Shutdown with remarks:- GT	
05:59	Ashuganj (South) 360 MW CCPP was shutdown.	
06:15	Siddhirganj 335 MW CCPP GT was sync.	
07:13	Sherpur 132/33kV S/S Transformer- 02 LT Scheduled S/D Due to Annual maintenance.	10.0MW load interrup.
07:14	Sherpur 132/33kV S/S Transformer- 02 HT Scheduled S/D Due to Annual maintenance.	10.0MW load interrup.
07:35	Bashundhara-Rampura 132 kV Ckt-2 Scheduled S/D from Rampura 230/132kV end Due to Annual Maintenance.	
07:48	Payra 400/132/33kV S/S 400/132/33 kV Auto Transformer-02 HT Tripped showing BUCHHOLZ Relay relays Due to TR SELF PROTECTION TRIP, OLTC 1/2/3 BUCHHOLZ TRIP	

Sub-Divisional Engineer
Network Operation Division

Executive Engineer
Network Operation Division

Superintendent Engineer
Network Operation Division