



Power Grid Bangladesh PLC
National Load Dispatch Center (NLDC)
System Summary Report

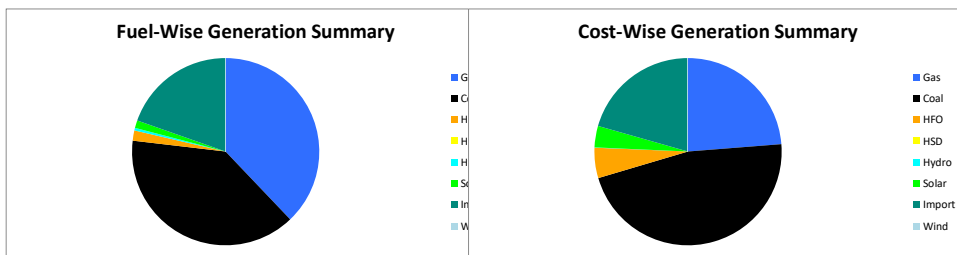
Date : 23-12-2025

Power Supply Scenario

Day Peak Generation	9940.88	MW	12:00 Hr.	Energy Generated	227.22049	MKWHr.
Day Peak Demand	9940.88	MW	12:00 Hr.	Energy Unserverd	0.00000	MKWHr.
Evening Peak Generation	11012.37	MW	18:00 Hr.	Energy Demand	227.22049	MKWHr.
Evening Peak Demand	11012.37	MW	18:00 Hr.	Maximum Temperature	26.80	°C
Minimum Generation of the Day	7408.18	MW	04:00 Hr.	Total Gas Supplied	658.36	MMCFD
Maximum Generation of the Day	11012.37	MW	18:00 Hr.	Production Cost per KWHr	5.55357	Tk.

Zone-wise Generation Summary (MKWHr.)

	Gas	Coal	HFO	HSD	Hydro	Solar	Import	Wind	Total
Dhaka Zone	24.66	0.00	2.41	0.00	0.00	0.17	0.00	0.00	27.24
Chattogram Zone	5.43	40.63	0.13	0.00	0.96	0.14	0.00	0.00	47.30
Cumilla Zone	19.23	0.00	0.16	0.00	0.00	0.36	2.35	0.00	22.11
Mymensingh Zone	0.95	0.00	1.08	0.00	0.00	0.18	0.00	0.00	2.21
Sylhet Zone	12.53	0.00	0.00	0.00	0.00	0.05	0.00	0.00	12.58
Khulna Zone	2.80	20.20	0.00	0.00	0.00	0.46	19.65	0.00	43.12
Barishal Zone	8.18	26.56	0.00	0.00	0.00	0.00	0.00	0.00	34.75
Rajshahi Zone	12.28	0.00	0.00	0.00	0.00	0.99	22.49	0.00	35.76
Rangpur Zone	0.00	1.23	0.24	0.00	0.00	0.69	0.00	0.00	2.16
Total	86.07	88.64	4.03	0.00	0.96	3.03	44.49	0.00	227.22



Production Cost (Tk.)

Fuel	Tk.	Fuel	Tk.
Gas	299520746.8	Hydro	96400
Coal	589442639.5	Solar	46829090.71
HFO	66331924.34	Import	259664534.8
HSD	0	Wind	0
Total:	126,18,85,336		Tk.

E-W Interconnector & Import Scenario

Energy Flow from East to West:	KWHr:	0	Import through HVDC C/B Interconnector:	MKWHr:	19.650181	Peak Hr Flow	892.00 MW at 18:00 hrs.
Energy Flow from West to East:	KWHr:	42366981.83	Import through Adani C/B Interconnector:	MKWHr:	22.488364	Peak Hr Flow	1325.37 MW at 18:00 hrs.
Low during Peak Demand (W-E):	MW:	2179	Import through Cumilla C/B Interconnector:	MKWHr:	2.35296	Peak Hr Flow	114.00 MW at 18:00 hrs.
Maximum Power Flow (W-E):	MW:	2455	Total Import through C/B Interconnector:	MKWHr:	44.491505	Peak Hr Flow	2331.37 MW at 18:00 hrs.

Zone-wise Load-shed and Demand Summary (MW) at evening peak Hour (18:00 Hr.)

Zone	Load-Shed	Demand
Dhaka	0	4187
Chattogram	0	1198
Cumilla	0	897
Mymensingh	0	864
Sylhet	0	407
Khulna	0	1267
Barishal	0	310
Rajshahi	0	1006
Rangpur	0	741
Total	0	10877

Status of unavailable Power Plant

Planned S/D			Forced S/D		
Sl	Plant Name	Capacity	Sl	Plant Name	Capacity
1	Baghabari 100 MW GTPP	100	1	Bheramara 410 MW CCPP GT	278
2	Barapukuria TPP Unit-2	85	2	Bheramara 410 MW CCPP ST	132
3	Siddhirgonj 210 MW TPP	115			
Total		300	Total		410
Total Unavailable Capacity			710		

Event Summary

Outage Time	Restoration Time	Description of Event	Description of Event
08:11	16:03	Benapole-Jashore 132 kV Ckt-1 Scheduled S/D from Benapole 132/33kV end Due to 132 KV Benapole-Jashore line-1 annual maintenance. and from Jashore 132/33kV end Due to Annual Maintenance	
08:15	15:48	Barishal(N)-Madaripur 132 kV Ckt-2 Scheduled S/D from Madaripur 132/33kV end Due to Annual Maintenance and from Barishal 230/132kV end Due to Annual maintenance	
08:22	17:26	Chattak-Sunamganj 132 kV Ckt-1 Scheduled S/D from Sunamganj 132/33kV end Due to Due to dead line checking	
08:22	17:24	Madunaghat 400/230kV S/S Madunaghat-Shikalbaha 230kV Ckt.-1 Scheduled S/D Due to Annual Maintenance. Shutdown taken by Shikalbaha 230kV Grid.	
08:23	17:26	Chhatak 132/33kV S/S Sunamganj 1 Scheduled S/D Due to Dead Line Checking	



Power Grid Bangladesh PLC
National Load Dispatch Center (NLDC)
System Summary Report

Date :	23-12-2025	
08:28	18:12 Bog-Sherpur 132/33kV S/S Transformer-1 (404T) LT Scheduled S/D Due to Annual Maintenance.	
08:28	18:10 Bog-Sherpur 132/33kV S/S Transformer-1 (404T) HT Scheduled S/D Due to Annual Maintenance.	
08:31	16:31 Kallyanpur-Lalbag 132kV Ckt-2 Scheduled S/D from Kallyanpur 132/33kV end Due to Annual Maintenance.	
08:31	15:13 Bhulta-Haripur 230 kV Ckt-1 Scheduled S/D from Bhulta 400/230kV end. and from Haripur 230/132kV end Due to Annual maintenance	
08:38	18:43 Aminbazar-Meghnaghat 400kV Ckt-2 Scheduled S/D from Meghnaghat 400/230kV end Due to Maintenance work	
08:41	17:46 Aminbazar-Mirpur 132kV Ckt-1 Scheduled S/D from Mirpur 132/33kV end Due to Bay Equipment Annual maintenance work	
08:43	15:31 Shahjibazar-Sreemangal 132kV Ckt-2 Scheduled S/D from Shahjibazar 132/33kV end Due to Annual Maintenance and from Sreemongol 132/33kV end Due to For annual maintenance.	
08:47	13:58 Chandpur 132/33kV S/S 115MW CPGL Power Plant Incomer (L5) Scheduled S/D Due to Annual maintenance	
08:52	Ghorasal-Joydeb-B 132kV Ckt-2 Scheduled S/D from Joydebpur 132/33kV end Due to Annual maintenance.	
08:59	14:34 Fenchuganj 230/132/33kV S/S AT-01 HT Scheduled S/D Due to Annual Maintenance	
08:59	14:31 Fenchuganj 230/132/33kV S/S AT-01 LT Scheduled S/D Due to Annual Maintenance	
09:00	16:38 Amnura-Chapainawabganj-132kV Ckt-1 Scheduled S/D from Amnura 132/33kV end Due to Annual maintenance. and from Chapai 132/33kV end Due to Annual Maintenance	
09:01	12:36 Barishal 230/132kV S/S ATR-2 HT Scheduled S/D Due to Tan Delta test	
09:01	12:34 Barishal 230/132kV S/S ATR-2 LT Scheduled S/D	
09:13	17:49 Mirpur 132/33kV S/S Reserve Bus Scheduled S/D Due to Annual Maintenance	
09:18	18:13 Kabirpur-Kaliakoir 132kV Ckt-1 Scheduled S/D from Kaliakoir 400/230/132kV end Due to By NLDC and from Kabirpur 132/33kV end Due to Annual maintenance	
09:18	12:22 Kodda 132/33kV S/S Tr-4 (436T) LT Scheduled S/D Due to Am	80.0MW load interrup.
09:18	12:22 Kodda 132/33kV S/S Tr-3 (426T) LT Scheduled S/D Due to Am	80.0MW load interrup.
09:19	12:21 Kodda 132/33kV S/S Tr-3 (426T) HT Scheduled S/D Due to Am	80.0MW load interrup.
09:19	12:21 Kodda 132/33kV S/S Tr-4 (436T) HT Scheduled S/D Due to Am	80.0MW load interrup.
09:19	09:33 Kodda 132/33kV S/S Tr-5 (446T) LT Scheduled S/D Due to Am	80.0MW load interrup.
09:20	09:32 Kodda 132/33kV S/S Tr-5 (446T) HT Scheduled S/D Due to Am	80.0MW load interrup.
09:26	14:42 Magura 132/33kV S/S T-2 (415T) HT Scheduled S/D Due to Annual maintenance	
09:27	14:45 Magura 132/33kV S/S T-2 (415T) LT Scheduled S/D Due to Annual maintenance	
09:31	16:46 Rajendrapur 132/33kV S/S MTR-2 LT Project Work S/D	
09:32	16:46 Rajendrapur 132/33kV S/S MTR-2 HT Project Work S/D	
09:33	Rajendrapur 132/33kV S/S 132 kV BUS-2 Project Work S/D	
09:36	15:52 BSRM-GPH 230 kV Ckt-2 Scheduled S/D from GPH 230/33kV end Due to shedule maintenance	
09:57	16:34 Sreepur 230/132/33kV S/S 132 kV BUS-1 Scheduled S/D Due to Annual Maintenance	
10:05	17:02 Mongla 132/33kV S/S T-1 LT Scheduled S/D Due to Annual maintenances	
10:05	17:01 Mongla 132/33kV S/S T-1 HT Scheduled S/D Due to Annual maintenances	
10:15	19:39 Kaliakoir 400/230/132kV S/S 132kV Bus 2 Scheduled S/D Due to Annual Maintenance Work	
10:16	Bibiana 400/230kV S/S Summit STG Scheduled S/D Due to AM	
10:21	12:06 Satmasjid 132/33kV S/S 132/33 KV Transformer-1 HT Scheduled S/D Due to Relay Testing	
10:22	14:55 Joypurhat 132/33kV S/S Transformer T-4 (437 T) LT Scheduled S/D Due to Yearly Maintenance	
10:23	14:53 Joypurhat 132/33kV S/S Transformer T-4 (437 T) HT Scheduled S/D Due to Yearly Maintenance	
10:34	17:04 Cumilla(S) 132/33kV S/S TR-1 LT Scheduled S/D Due to Ten -delta test	
10:35	17:04 Cumilla(S) 132/33kV S/S TR-1 HT Scheduled S/D Due to ten-delta test	



Power Grid Bangladesh PLC
National Load Dispatch Center (NLDC)
System Summary Report

Date :	23-12-2025		
10:37	13:49	Mahasthangar-Palashbari 132kV Ckt-2 Forced S/D from Palashbari 132/33kV end Due to Annual Maintenance and from Mahasthangarh 132/33kV end Due to Annual Maintenance	
10:37	17:11	Bogura 400/230kV S/S ATR-03 LT Scheduled S/D Due to Annual Maintenance	
10:37	17:11	Bogura 400/230kV S/S ATR-03 HT Scheduled S/D Due to Annual Maintenance	
10:41	15:43	Ashuganj-Kishoreganj 132kV Ckt-1 Scheduled S/D from Bajitpur 132/33kV end Due to Transmission line maintenance work	
	11:05	Meghnaghat 400/230kV S/S ATR -03 HT is restored.	
	11:05	Meghnaghat 400/230kV S/S ATR -03 LT is restored.	
11:32	21:05	Bhaluka 132/33kV S/S BR Powergen Ckt- 01 Project Work S/D Due to Project work done by SPMD at BR Powergen End	
11:33	21:05	Bhaluka 132/33kV S/S BR Powergen Ckt- 02 Project Work S/D Due to Project work done by SPMD at BR Powergen End	
	11:33	Sherpur 132/33kV S/S Transformer- 03 LT is restored.	
	11:33	Sherpur 132/33kV S/S Transformer- 03 HT is restored.	
12:14	13:12	Satmasjid 132/33kV S/S 132/33 KV Transformer-2 HT Scheduled S/D Due to relay testing	
	12:19	Payra 400/132/33kV S/S 400/132/33 kV Auto Transformer-02 HT is restored.	
12:48	19:22	Barishal 230/132kV S/S ATR-1 LT Scheduled S/D Due to Tan Delta test	
12:49	19:24	Barishal 230/132kV S/S ATR-1 HT Scheduled S/D	
	12:52	Barishal 132/33kV S/S 132 kv Summit power is restored.	
13:32	14:06	Satmasjid 132/33kV S/S 132 KV Agargaon-Satmasjid Line-1 Scheduled S/D Due to Relay testing	
13:34	19:51	Barishal 230/132kV S/S T-4 LT Scheduled S/D Due to Tan Delta test	
13:34	19:49	Barishal 230/132kV S/S T-4 HT Scheduled S/D	
14:06	17:11	Satmasjid 132/33kV S/S 132 KV Agargaon-Satmasjid Line-2 Scheduled S/D Due to Annual Maintenance	
15:33	18:15	Rampura-Ullon-2 132kV Ckt-1 Scheduled S/D from Rampura 230/132kV end Due to SD by NLDC	
	16:13	Aminbazar 400/230/132kV S/S 230/132kv Tr-01 HT is restored.	
	16:16	Aminbazar 400/230/132kV S/S 230/132kv Tr-01 LT is restored.	
	16:52	Gopalganj 400/132kV S/S 230kV Faridpur CKT-02 is restored.	
18:00		Evening Peak generation: 11012 MW.	
18:12		Bogura 400/230kV S/S 400 KV Reactor (125 MVAR) Forced S/D	
20:33		Bheramara 410 MW CCPP ST Forced Shutdown with remarks:- Shutdown due to gas shortage	
20:33		Bheramara 410 MW CCPP Shutdown with remarks:- STG	
21:15		Bheramara 410 MW CCPP GT Forced Shutdown with remarks:- Shutdown due to gas shortage	
21:15		Bheramara 410 MW CCPP Shutdown with remarks:- GTG	
	23:09	Bhulta-Ghorasal 230 kV Ckt-2 is restored.	
05:00		Minimum Generation: 7451 MW.	
06:15	06:37	Fenchuganj-Kulaura 132 kV Ckt-2 Tripped from Kulaura 132/33kV end showing Distance Protection Relay relays.	8.0MW load interrupt. Kulaura 132/33kV end
06:15	06:35	Fenchuganj-Kulaura 132 kV Ckt-1 Tripped from Kulaura 132/33kV end showing Distance Protection Relay relays.	8.0MW load interrupt. Kulaura 132/33kV end
06:15	06:57	Kulaura 132/33kV S/S TR-2 LT Tripped showing Differential relay relays.	7.0MW load interrupt.
06:15	06:50	Kulaura 132/33kV S/S TR-2 HT Tripped showing Differential relay relays.	7.0MW load interrupt.
06:15	06:58	Kulaura 132/33kV S/S TR-1 AB LT Tripped showing Differential relay relays.	10.0MW load interrupt.
06:15	06:48	Kulaura 132/33kV S/S TR-1 AB HT Tripped showing Differential RelayOver current protection relay relays Due to None	10.0MW load interrupt.
07:11		Sunamganj 132/33kV S/S Chhatak-Sunamgonj CKT-2 Scheduled S/D Due to Dead Line Checking	



Power Grid Bangladesh PLC
National Load Dispatch Center (NLDC)
System Summary Report

Date : 23-12-2025

07:20	Aminbazar 400/230/132kV S/S 230/132kv Tr-01 LT Tripped showing ABB relays.	
07:20	Aminbazar 400/230/132kV S/S 230/132kv Tr-01 HT Tripped showing ABB relays.	
07:46	Aminbazar-Kaliakoir 230kV Ckt-1 Scheduled S/D from Aminbazar 400/230/132kV end Due to Annual Maintenance	
07:51	Mymensingh RPCL-Tangail 132kV Ckt-1 Scheduled S/D from Muktagacha 132/33kV end Due to Piling work of RHD	
07:53	Jaldhaka 132/33kV S/S 406T-1 LT Scheduled S/D Due to PBS 33 kV feeder (New feeder) Connect on 33 kV BUS section-1.	13.0MW load interrup.
07:53	Jaldhaka 132/33kV S/S 406T-1 HT Scheduled S/D Due to PBS 33 kV feeder (New feeder) Connect on 33 kV BUS section-1	13.0MW load interrup.

Sub-Divisional Engineer
Network Operation Division

Executive Engineer
Network Operation Division

Superintendent Engineer
Network Operation Division