



Power Grid Bangladesh PLC  
National Load Dispatch Center (NLDC)  
System Summary Report

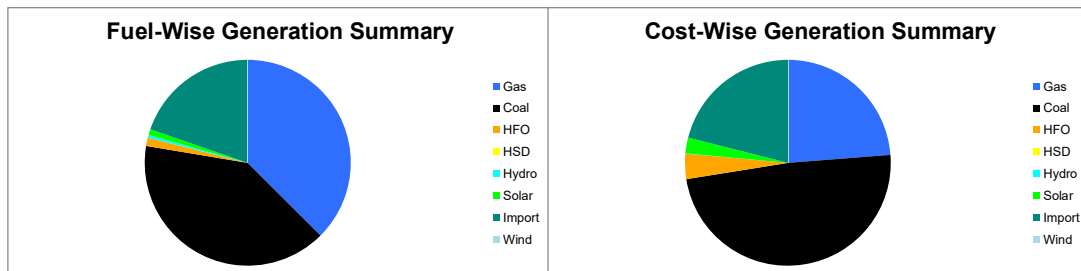
Date : 24-12-2025

Power Supply Scenario

Day Peak Generation	10138.04	MW	12:00 Hr.	Energy Generated	228.66754	MKWHr.
Day Peak Demand	10138.04	MW	12:00 Hr.	Energy Unserved	0.00000	MKWHr.
Evening Peak Generation	11052.5	MW	19:00 Hr.	Energy Demand	228.66754	MKWHr.
Evening Peak Demand	11052.5	MW	19:00 Hr.	Maximum Temperature	24.00	°C
Minimum Generation of the Day	7451	MW	05:00 Hr.	Total Gas Supplied	617.64	MMCFD
Maximum Generation of the Day	11052.5	MW	19:00 Hr.	Production Cost per KWHR	5.48985	Tk.

Zone-wise Generation Summary (MKWHr.)

	Gas	Coal	HFO	HSD	Hydro	Solar	Import	Wind	Total
Dhaka Zone	24.64	0.00	1.37	0.00	0.00	0.07	0.00	0.00	26.08
Chattogram Zone	5.57	40.74	0.21	0.00	0.97	0.11	0.00	0.00	47.59
Cumilla Zone	21.71	0.00	0.28	0.00	0.00	0.36	2.20	0.00	24.54
Mymensingh Zone	1.10	0.00	0.96	0.00	0.00	0.09	0.00	0.00	2.14
Sylhet Zone	13.57	0.00	0.00	0.00	0.00	0.04	0.00	0.00	13.61
Khulna Zone	0.00	21.29	0.00	0.00	0.00	0.44	19.33	0.00	41.06
Barishal Zone	8.37	28.43	0.00	0.00	0.00	0.00	0.00	0.00	36.80
Rajshahi Zone	10.77	0.00	0.00	0.00	0.00	0.61	23.59	0.00	34.96
Rangpur Zone	0.00	1.25	0.27	0.00	0.00	0.35	0.00	0.00	1.88
<b>Total</b>	<b>85.71</b>	<b>91.72</b>	<b>3.09</b>	<b>0.00</b>	<b>0.97</b>	<b>2.07</b>	<b>45.11</b>	<b>0.00</b>	<b>228.67</b>



Production Cost (Tk.)

Fuel	Tk.	Fuel	Tk.
Gas	298383624.6	Hydro	96800
Coal	611094595.2	Solar	31286740.19
HFO	50151478.19	Import	264337593.2
HSD	0	Wind	0
<b>Total:</b>	<b>125,53,50,831</b>	<b>Tk.</b>	

E-W Interconnector & Import Scenario

Energy Flow from East to West:	KWHr:	0	Import through HVDC C/B Interconnector:	MKWHr:	19.326545	Peak Hr Flow	902.00 MW at 19:00 hrs.
Energy Flow from West to East:	KWHr:	41634672.73	Import through Adani C/B Interconnector:	MKWHr:	23.585454	Peak Hr Flow	1231.00 MW at 19:00 hrs.
Flow during Peak Demand (W-E):	MW:	2155	Import through Cumilla C/B Interconnector:	MKWHr:	2.19648	Peak Hr Flow	98.00 MW at 19:00 hrs.
Maximum Power Flow (W-E):	MW:	2305	Total Import through C/B Interconnector:	MKWHr:	45.108479	Peak Hr Flow	2231.00 MW at 19:00 hrs.

Zone-wise Load-shed and Demand Summary (MW) at evening peak Hour (19:00 Hr.)

Zone	Load-Shed	Demand
Dhaka	0	4004
Chattogram	0	1233
Cumilla	0	924
Mymensingh	0	847
Sylhet	0	386
Khulna	0	1243
Barishal	0	300
Rajshahi	0	955
Rangpur	0	721
<b>Total</b>	<b>0</b>	<b>10613</b>

Status of unavailable Power Plant

Planned S/D			Forced S/D		
Sl	Plant Name	Capacity	Sl	Plant Name	Capacity
1	Baghabari 100 MW GTPP	100	1	Bheramara 410 MW CCPP GT	278
2	Barapukuria TPP Unit-2	85	2	Bheramara 410 MW CCPP ST	132
3	Siddhirgonj 210 MW TPP	115			
<b>Total</b>		<b>300</b>	<b>Total</b>		<b>410</b>
<b>Total Unavailable Capacity</b>			<b>710</b>		

Event Summary

Outage Time	Restoration Time	Description of Event	Description of Event
08:12	16:53	Barishal(N)-Madaripur 132 kV Ckt-2 Scheduled S/D from Madaripur 132/33kV end Due to Annual Maintenance and from Barishal 230/132kV end Due to Annual Maintenance	
08:14	16:48	Benapole-Jashore 132 kV Ckt-1 Scheduled S/D from Benapole 132/33kV end Due to Annual maintenance and from Jashore 132/33kV end Due to Shutdown for benapole end	
08:15	14:28	Bakulia 132/33kV S/S Bus-B Scheduled S/D	
08:28	14:58	Ghorasal-Joydeb-B 132kV Ckt-2 Scheduled S/D from Joydebpur 132/33kV end Due to Annual maintenance	
08:31	15:33	Faridpur 132/33kV S/S 230kV Faridpur-Gopalganj CKT-2 Scheduled S/D Due to Annual Maintenance	
08:33	15:34	Gopalganj 400/132kV S/S 230kV Faridpur CKT-02 Scheduled S/D Due to Annual Maintenance	
08:49	12:40	Cumilla(S) 132/33kV S/S TR-3 LT Scheduled S/D Due to Protection test	
08:49	12:39	Cumilla(S) 132/33kV S/S TR-3 HT Scheduled S/D	
08:53		Bhulta-Haripur 230 kV Ckt-2 Scheduled S/D from Bhulta 400/230kV end. and from Haripur 230/132kV end Due to Annual Deadline checking.	
08:57	15:12	Ramganj 132/33kV S/S Ramgonj- Desh Energy Ckt-01 Scheduled S/D Due to Annual Maintenance	
08:58	15:15	Shahjibazar-Sreemangal 132kV Ckt-2 Scheduled S/D from Sreemongol 132/33kV end Due to annual maintenance and from Shahjibazar 132/33kV end Due to Shutdown for annual maintenance.	
09:00		Ghorasal-Narsingdi 132 kV Ckt-2 Scheduled S/D from Narshingdi 132/33kV end Due to Annual maintenance	
09:05	17:46	Mongla 132/33kV S/S T-1 LT Scheduled S/D Due to Annual Maintenance.	



Power Grid Bangladesh PLC  
National Load Dispatch Center (NLDC)  
System Summary Report

Date : 24-12-2025

09:06	17:46	Mongla 132/33kV S/S T-1 HT Scheduled S/D Due to Annual Maintenance.
09:08	13:43	Magura 132/33kV S/S T-2 (415T) LT Scheduled S/D Due to For Annual Maintenance.
09:09		Aminbazar-Mirpur 132kV Ckt-1 Scheduled S/D from Mirpur 132/33kV end.
09:09	13:38	Magura 132/33kV S/S T-2 (415T) HT Scheduled S/D Due to For Annual Maintenance.
09:10	18:01	KSRM 132/33kV S/S Transformer-01 HT Scheduled S/D Due to 33 kV Bus-01 Emergency Maintenance
09:13		Madunaghat 400/230kV S/S Madunaghat-Shikalbaha 230kV Ckt.-1 Scheduled S/D
09:18	15:59	Amnura-Chapainawabganj-132kV Ckt-1 Scheduled S/D from Amnura 132/33kV end Due to Annual Maintenance and from Chapai 132/33kV end Due to Annual maintenance
09:20		Mirpur 132/33kV S/S Reserve Bus Scheduled S/D
09:24	12:11	Kallyanpur 132/33kV S/S GT-1 (132kV) HT Scheduled S/D Due to Relay test
09:25	11:58	Bashundhara-Tongi 132 kV Ckt-2 Scheduled S/D from Tongi 230/132/33kV end.
09:30	14:14	Cumilla(N) 230/132/33kV S/S 132KV T-04 LT Scheduled S/D Due to Annual maintenance
09:30	14:14	Cumilla(N) 230/132/33kV S/S 132KV T-04 HT Scheduled S/D Due to Annual maintenance
09:38	11:44	Cumilla(N)-Daudkandi 132 kV Ckt-2 Project Work S/D from Daudkandi 132/33kV end.
09:39	15:48	Ishurdi 132/33kV S/S 132/33 kV T-1 LT Scheduled S/D Due to A/M
09:39	11:08	Aminbazar-Meghnaghat 400kV Ckt-2 Scheduled S/D from Meghnaghat 400/230kV end Due to For Aminbazar maintenance work
09:41	15:48	Ishurdi 132/33kV S/S 132/33 kV T-1 HT Scheduled S/D Due to A/M
09:44	17:51	Sreepur 230/132/33kV S/S Sreepur-Ashuganj Ckt-1 Scheduled S/D Due to Development Work at Ashuganj end
09:47	11:42	Muradnagar 132/33kV S/S 132 KV Muradnagar- Daudkandi Ckt-02 Project Work S/D Due to Project Work Shutdown
09:53		BSRM-GPH 230 kV Ckt-1 Scheduled S/D from BSRM 230/33kV end Due to Annual Maintenance
09:54	15:35	BSRM-GPH 230 kV Ckt-2 Scheduled S/D from GPH 230/33kV end Due to Maintenance Works.
09:55	13:18	Dhamrai-Kaliakoir 132 kV Ckt-2 Scheduled S/D from Dhamrai 132/33kV end Due to Kaliakoir SS Maintenance work
10:10	11:38	Muradnagar 132/33kV S/S 132 KV Muradnagar- Cumilla(N) Ckt-01 Project Work S/D Due to Project Work Shutdown
10:20	16:45	Kabirpur -Tongi 132kV Ckt-2 Scheduled S/D from Tongi 230/132/33kV end. and from Kabirpur 132/33kV end Due to Annual maintenance (deadline checking)
11:00	15:25	Kabirpur - Manikganj 132kV Ckt-1 Scheduled S/D from Manikganj 132/33kV end Due to Tower painting
	11:02	Jaldhaka 132/33kV S/S 406T-1 HT is restored.
	11:03	Jaldhaka 132/33kV S/S 406T-1 LT is restored.
11:07	14:28	Barishal 132/33kV S/S T-2 (415T) LT Scheduled S/D Due to For T2 Transformer Tan Delta Test
11:08	14:28	Barishal 132/33kV S/S T-2 (415T) HT Scheduled S/D Due to For T2 Transformer Tan Delta Test
11:08	14:28	Barishal 132/33kV S/S T-2 (415T) HT Scheduled S/D Due to For T2 Transformer Tan Delta Test
	11:09	Aminbazar-Meghnaghat 400kV Ckt-2 is restored.
11:18		Rajendrapur 132/33kV S/S MTR-2 HT Project Work S/D Due to Project work gas filling in GIS Chamber.
11:18		Rajendrapur 132/33kV S/S MTR-2 LT Project Work S/D Due to Project work gas filling in GIS Chamber.
11:19	15:50	Bog-Sherpur 132/33kV S/S Transformer-3 (424T) LT Forced S/D Due to OLTC Oil Refill
11:20	15:49	Bog-Sherpur 132/33kV S/S Transformer-3 (424T) HT Forced S/D Due to OLTC Oil Refill.
11:48	12:40	Halishahar-Khulshi 132kV Ckt-2 Tripped from Halishahar 132/33kV end showing Distance relay,lockout relay relays Due to Transient fault
11:49	13:25	Cumilla(N)-Daudkandi 132 kV Ckt-1 Project Work S/D from Daudkandi 132/33kV end Due to 132 KV Muradnagar-1 shutdown by project work Muradnagor End.
11:49	13:24	Muradnagar 132/33kV S/S 132 KV Muradnagar- Daudkandi Ckt-01 Project Work S/D Due to project work
12:00	13:20	Muradnagar 132/33kV S/S 132 KV Muradnagar- Cumilla(N) Ckt-02 Project Work S/D Due to project work
12:00		Day Peak Gen. 10138 MW
	12:17	Bhulta-Ghorasal 230 kV Ckt-1 is restored.
12:43	16:40	Cumilla(S) 132/33kV S/S TR-4 LT Scheduled S/D Due to None
12:44	16:40	Cumilla(S) 132/33kV S/S TR-4 HT Scheduled S/D Due to None
13:17	15:26	Dhamrai-Kaliakoir 132 kV Ckt-1 Scheduled S/D from Dhamrai 132/33kV end Due to Work by kaliakoir grid SS.
13:54	14:36	Kallyanpur 132/33kV S/S GT-2 (132kV) HT Scheduled S/D Due to Relay Test
14:45	16:20	Kallyanpur 132/33kV S/S GT-3 (132kV) HT Scheduled S/D Due to Relay protection testing.



Power Grid Bangladesh PLC  
National Load Dispatch Center (NLDC)  
System Summary Report

Date : 24-12-2025

16:06	17:20	Nawabganj 132/33kV S/S TR-1 LT Scheduled S/D Due to For Oil leakage repair at NIFPS joint.	
16:08	17:18	Nawabganj 132/33kV S/S TR-1 HT Scheduled S/D Due to For Oil leakage repair at NIFPS joint.	
	17:23	Sunamganj 132/33kV S/S Chhatak-Sunamgonj CKT-2 is restored.	
	17:27	Aminbazar-Kaliakoir 230kV Ckt-1 is restored.	
	18:09	Sonargaon 132/33kV S/S Bashundhara Line is restored.	
19:16		Purbasadipur-Thakurgaon-EPV 132kV Ckt-1 Project Work S/D from Purbasadipur 132/33kV end Due to Project Work S/D for Reconductoring (connected with GIS)	
	19:39	Ashuganj 230/132/33kV S/S 230kv Busbar-2 is restored.	
	20:17	Aminbazar 400/230/132kV S/S 230/132kv Tr-01 HT is restored.	
	20:19	Aminbazar 400/230/132kV S/S 230/132kv Tr-01 LT is restored.	
23:30	00:00	Sonargaon 132/33kV S/S Tr-2 LT Tripped showing Trip Relay(MVAJM) relays Due to Due to Pbs Borfa, Kabilganj Feeder line trip	65.0MW load interrupt.
03:29	04:30	Sonargaon 132/33kV S/S Tr-2 LT Forced S/D Due to due to pbs 33KV Barpa feeder Bus Ds to CT loop separate	53.0MW load interrupt.
03:30	04:29	Sonargaon 132/33kV S/S Tr-2 HT Forced S/D Due to due to pbs 33KV Barpa feeder Bus Ds to CT loop separate	53.0MW load interrupt.
04:16	04:37	Mahasthangarh 132/33kV S/S 406T MTR1 LT Tripped showing Over current P142 relays Due to NESCO 33kv Feeder Fault	13.0MW load interrupt.
04:16	04:38	Mahasthangarh 132/33kV S/S 416T MTR 2 LT Tripped showing Over current P142 relays Due to NESCO 33kv Feeder Fault	13.0MW load interrupt.
04:44	05:32	Mahasthangarh 132/33kV S/S 416T MTR 2 LT Tripped showing Over current P142 relays Due to Fasilitola 33kv Feeder Fault	13.0MW load interrupt.
04:44	05:31	Mahasthangarh 132/33kV S/S 406T MTR1 LT Tripped showing Over current P142 relays Due to Fasilitola 33kv Feeder Fault	13.0MW load interrupt.
05:00		Minimum Generation: 7230 MW.	
05:43		Siddhirganj 132/33kV S/S 120MW EGCB GT2 Forced S/D Due to Oil leakage in unit transformer-2	
	06:23	Bogura 400/230kV S/S 400 KV Reactor (125 MVAR) is restored.	
07:35		Kishoreganj-Mymensingh 132kV Ckt-1 Project Work S/D from Kishoreganj 132/33kV end Due to Project work	

Sub-Divisional Engineer  
Network Operation Division

Executive Engineer  
Network Operation Division

Superintendent Engineer  
Network Operation Division