



**Power Grid Bangladesh PLC**  
**National Load Dispatch Center (NLDC)**  
**System Summary Report**

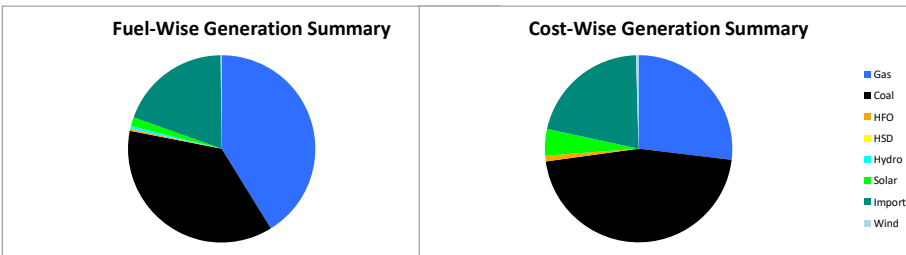
Date : 31-12-2025

**Power Supply Scenario**

Day Peak Generation	9270.07	MW	12:00 Hr.	Energy Generated	208.68908	MKWHr.
Day Peak Demand	9270.07	MW	12:00 Hr.	Energy Unserverd	0.00000	MKWHr.
Evening Peak Generation	9865	MW	19:00 Hr.	Energy Demand	208.68908	MKWHr.
Evening Peak Demand	9865	MW	19:00 Hr.	Maximum Temperature	22.90	°C
Minimum Generation of the Day	7088	MW	05:00 Hr.	Total Gas Supplied	641.82	MMCFD
Maximum Generation of the Day	10081.28	MW	13:00 Hr.	Production Cost per KWHr	5.33440	Tk.

**Zone-wise Generation Summary (MKWHr.)**

	Gas	Coal	HFO	HSD	Hydro	Solar	Import	Wind	Total
Dhaka Zone	24.02	0.00	0.45	0.00	0.00	0.11	0.00	0.00	24.58
Chattogram Zone	4.22	34.69	0.00	0.00	1.11	0.12	0.00	0.35	40.48
Cumilla Zone	21.83	0.00	0.00	0.00	0.00	0.34	1.83	0.00	24.00
Mymensingh Zone	2.71	0.00	0.16	0.00	0.00	0.17	0.00	0.00	3.04
Sylhet Zone	14.28	0.00	0.00	0.00	0.00	0.01	0.00	0.00	14.29
Khulna Zone	0.00	19.77	0.00	0.00	0.00	0.50	17.84	0.00	38.11
Barishal Zone	6.79	22.59	0.00	0.00	0.00	0.00	0.00	0.00	29.39
Rajshahi Zone	12.09	0.00	0.00	0.00	0.00	0.97	20.73	0.00	33.80
Rangpur Zone	0.00	0.00	0.00	0.00	0.00	0.99	0.00	0.00	0.99
<b>Total</b>	<b>85.94</b>	<b>77.05</b>	<b>0.61</b>	<b>0.00</b>	<b>1.11</b>	<b>3.22</b>	<b>40.41</b>	<b>0.35</b>	<b>208.69</b>



**Production Cost (Tk.)**

Fuel	Tk.	Fuel	Tk.
Gas	299131745.7	Hydro	110616
Coal	511819205.6	Solar	51317174.51
HFO	10586962.23	Import	235111857.5
HSD	0	Wind	5154384
<b>Total:</b>	<b>111,32,31,945</b>	<b>Tk.</b>	

**E-W Interconnector & Import Scenario**

Day Flow from East to West:	KWHr:	0	Import through HVDC C/B Interconnector:	MKWHr:	17.844363	Peak Hr Flow:	2.00 MW at 19:00 hr
Day Flow from West to East:	KWHr:	31273345.47	Import through Adani C/B Interconnector:	MKWHr:	20.731636	Peak Hr Flow:	9.00 MW at 19:00 hr
Evening Peak Demand (W-E):	MW:	1431	Import through Cumilla C/B Interconnector:	MKWHr:	1.83264	Peak Hr Flow:	6.00 MW at 19:00 hrs
Maximum Power Flow (W-E):	MW:	1884	Total Import through C/B Interconnector:	MKWHr:	40.408639	Peak Hr Flow:	37.00 MW at 19:00 hr

**Zone-wise Load-shed and Demand Summary (MW) at evening peak Hour (19:00 Hr.)**

Zone	Load-Shed	Demand
Dhaka	0	3181
Chattogram	0	1091
Cumilla	0	896
Mymensingh	0	816
Sylhet	0	366
Khulna	0	1217
Barishal	0	312
Rajshahi	0	971
Rangpur	0	706
<b>Total</b>	<b>0</b>	<b>9556</b>

**Status of unavailable Power Plant**

Planned S/D			Forced S/D		
Sl	Plant Name	Capacity	Sl	Plant Name	Capacity
1	Baghabari 100 MW GTPP	100	1	Bheramara 410 MW CCPP GT	278
2	Barapukuria TPP Unit-2	85	2	Bheramara 410 MW CCPP ST	132
3	Siddhirgonj 210 MW TPP	115			
<b>Total</b>		<b>300</b>	<b>Total</b>		<b>410</b>
<b>Total Unavailable Capacity</b>			<b>710</b>		

**Event Summary**

Outage Time	Restoration Time	Description of Event	Description of Event
08:34		BIPTC S/S 10CF16 Tripped showing CPR04 relays.	
08:39	15:55	Brahmanbaria-Shahjibazar 132 kV Ckt-1 Scheduled S/D from Brahmanbaria 132/33kV end. and from Shahjibazar 132/33kV end Due to Annual Maintenance	
08:40		Ghorasal- Ishwardi 230 kV Ckt-1 Scheduled S/D from Ghorashal 230kV end Due to Re-routing for Ashulia express way work. and from Ishurdi 230/132kV end.	
08:48	17:23	Chowmuhani 132/33kV S/S HFPL line Forced S/D Due to 132 kv Dagonbhuyan ckt-02 line Re-rauting.	



**Power Grid Bangladesh PLC**  
**National Load Dispatch Center (NLDC)**  
**System Summary Report**

**Date :** 31-12-2025

08:58	10:38	Barapukuria-Bogura 230 kV Ckt-2 Forced S/D from Bogura 230/132kV end Due to SF6 Gas Pressure Meter Change.
09:27	19:56	Ghorasal-Joydeb-B 132kV Ckt-2 Scheduled S/D from Joydebpur 132/33kV end Due to OPGW wire stringing
09:31		Shahjibazar 132/33kV S/S TR-06 LT Scheduled S/D Due to Tr-06 Shutdown for a changing new Tr (80/120 MVA)
09:31		Shahjibazar 132/33kV S/S TR-06 HT Scheduled S/D Due to Tr-06 Shutdown for a changing new Tr (80/120 MVA)
11:05	15:41	Baghabari-Sirajganj 230 kV Ckt-2 Scheduled S/D from Baghabari 230/132kV end Due to Annual Maintenance
12:00		Day Peak Generation: 9267 MW.
12:14		Bhola Nutan Biddut BD LTD Synchronized
12:14		Bhola Nutan Bidyut CCGP GT-11 was sync.
12:14		Bhola Nutan Biddut BD LTD GT-1 Synchronized with remarks:- GT-11 was started and synchronized to grid at 12:14 hrs on 31st December 2025 after compressor offline water wash. Station reached full load at 14:03 hrs.
14:33		Halishahar 132/33kV S/S 415T(TR-2) LT Scheduled S/D Due to Oltc oil low alarm
14:34		Halishahar 132/33kV S/S 415T(TR-2) HT Scheduled S/D Due to Oltc oil low alarm
15:59	17:03	Mirzapur 132/33kV S/S Transformer-01(E05) HT Forced S/D Due to OLTC oil Level Low Alarm
15:59	17:04	Mirzapur 132/33kV S/S Transformer-01(E05) LT Forced S/D Due to OLTC oil Level Low Alarm
	17:45	Khulna (C) S/S Tr-2 415 T HT is restored.
	17:46	Khulna (C) S/S Tr-2 415 T LT is restored.
	18:09	Chowmuhani-Feni 132 kV Ckt-2 is restored.
19:00		Evening Peak Generation is 9865 MW.
23:21		Sirajganj 225MW CCGP Unit-1, FGMO is ON with remarks:-
00:01		Barisal 307 MW Synchronized
00:05		Payra 1320 MW Unit-1 was shutdown due to maintenance purpose
00:45		Ashuganj CCGP 225 MW Shutdown with remarks:- ST
02:06		Ashuganj CCGP 225 MW Shutdown with remarks:- GT
02:41	03:03	Ashuganj-Shahjibazar 132kV Ckt-1 Tripped from Shahjibazar 132/33kV end showing Distance Relay. relays Due to Non
02:55		Bogura 400/230kV S/S Bogura - Kaliakoir 400 kV Ckt-2 Forced S/D Due to Due to emergency voltage control
02:55		Bogura 400/230kV S/S Bogura - Kaliakoir 400 kV Ckt-1 Forced S/D Due to Due to emergency voltage control
03:54	06:37	Meghnaghat-Shyampur 230kV Ckt-2 Tripped from Shyampur 230/132kV end showing Distance relays Due to Line protection
05:07	07:00	Meghnaghat-Shyampur 230kV Ckt-1 Tripped from Meghnaghat 400/230kV end showing Relay 8601, Relay 86 2, Relay 96 relays Due to Meghnaghat -Shyampur 230kV ckt 1 Tripped. Line differential zone 1.Fault Distance: 8.1960 km
05:58	06:24	Fenchuganj-Sreemangal 132kV Ckt-2 Tripped from Sreemongol 132/33kV end showing Distance relay relays Due to distance relay Phase A and from Fenchuganj 230/132/33kV end showing REC650REL670 relays Due to Excessive Fog
06:33		Khulna (C) S/S Tr-2 415 T HT Project Work S/D Due to Piling work
06:33		Khulna (C) S/S Tr-2 415 T LT Project Work S/D Due to Piling work
07:19		Aminbazar-Meghnaghat 400kV Ckt-2 Scheduled S/D from Meghnaghat 400/230kV end Due to 400 kV Aminbazar ckt- 02 shutdown instructed by NLDC.
07:33		Chattak-Sylhet 132 kV Ckt-1 Scheduled S/D from Sylhet 132/33kV end Due to Dead Line Checking and from Chhatak 132/33kV end Due to Dead Line Cheacking

**Sub-Divisional Engineer**  
**Network Operation Division**

**Executive Engineer**  
**Network Operation Division**

**Superintendent Engineer**  
**Network Operation Division**