



Power Grid Bangladesh PLC
National Load Dispatch Center (NLDC)
System Summary Report

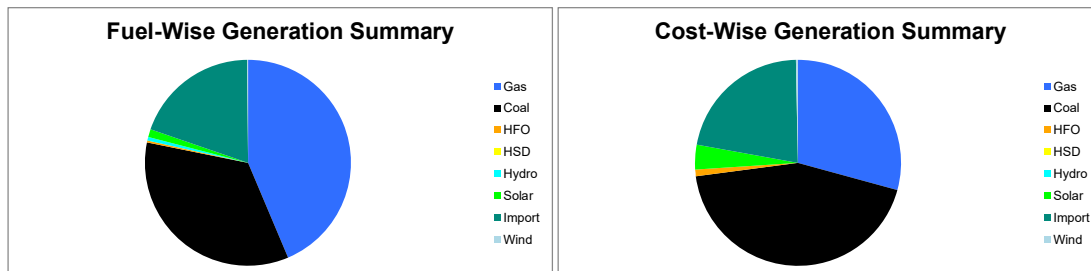
Date : 02-U1-ZU26

Power Supply Scenario

Day Peak Generation	9664.78	MW	12:00 Hr.	Energy Generated	205.92326	MKWHr.
Day Peak Demand	9664.78	MW	12:00 Hr.	Energy Unserviced	0.00000	MKWHr.
Evening Peak Generation	9605.14	MW	20:00 Hr.	Energy Demand	205.92326	MKWHr.
Evening Peak Demand	9605.14	MW	20:00 Hr.	Maximum Temperature	23.60	°C
Minimum Generation of the Day	6976.5	MW	05:00 Hr.	Total Gas Supplied	656.64	MMCFD
Maximum Generation of the Day	10693.14	MW	13:00 Hr.	Production Cost per KWHR	5.27178	Tk.

Zone-wise Generation Summary (MKWHr.)

	Gas	Coal	HFO	HSD	Hydro	Solar	Import	Wind	Total
Dhaka Zone	22.91	0.00	0.03	0.00	0.00	0.10	0.00	0.00	23.04
Chattogram Zone	4.73	31.67	0.00	0.00	1.07	0.14	0.00	0.24	37.86
Cumilla Zone	21.26	0.00	0.00	0.00	0.00	0.11	1.95	0.00	23.32
Mymensingh Zone	3.66	0.00	0.61	0.00	0.00	0.05	0.00	0.00	4.31
Sylhet Zone	15.69	0.00	0.00	0.00	0.00	0.01	0.00	0.00	15.70
Khulna Zone	0.00	19.84	0.00	0.00	0.00	0.43	17.05	0.00	37.32
Barishal Zone	8.15	19.69	0.00	0.00	0.00	0.00	0.00	0.00	27.85
Rajshahi Zone	13.39	0.00	0.00	0.00	0.00	0.93	21.38	0.00	35.70
Rangpur Zone	0.00	0.00	0.00	0.00	0.00	0.82	0.00	0.00	0.82
Total	89.79	71.20	0.63	0.00	1.07	2.61	40.38	0.24	205.92



Production Cost (Tk.)

Fuel	Tk.	Fuel	Tk.
Gas	317708139.4	Hydro	107328
Coal	473715461.4	Solar	41889867.18
HFO	11427494.4	Import	237239549.2
HSD	0	Wind	3495096
Total:	108,55,82,935		Tk.

E-W Interconnector & Import Scenario

Energy Flow from East to West:	KWHr:	2414000	Import through HVDC C/B Interconnector:	MKWHr:	17.051636	Peak Hr Flow:	2.00 MW at 20:00 hrs
Energy Flow from West to East:	KWHr:	29835272.73	Import through Adani C/B Interconnector:	MKWHr:	21.381818	Peak Hr Flow:	24.14 MW at 20:00 hrs
Energy during Peak Demand (W-E):	MW:	1658	Import through Cumilla C/B Interconnector:	MKWHr:	1.9488	Peak Hr Flow:	6.00 MW at 20:00 hrs
Maximum Power Flow (W-E):	MW:	2059	Total Import through C/B Interconnector:	MKWHr:	40.382254	Peak Hr Flow:	12.14 MW at 20:00 hr

Zone-wise Load-shed and Demand Summary (MW) at evening peak Hour (20:00 Hr.)

Zone	Load-Shed	Demand
Dhaka	0	3129
Chattogram	0	1069
Cumilla	0	895
Mymensingh	0	801
Sylhet	0	374
Khulna	0	1146
Barishal	0	313
Rajshahi	0	919
Rangpur	0	622
Total	0	9268

Status of unavailable Power Plant

Planned S/D			Forced S/D		
Sl	Plant Name	Capacity	Sl	Plant Name	Capacity
1	Baghabari 100 MW GTPP	100	1	Bheramara 410 MW CAPP GT	278
2	Barapukuria TPP Unit-2	85	2	Bheramara 410 MW CAPP ST	132
3	Siddhirgonj 210 MW TPP	115			
	Total	300		Total	410
	Total Unavailable Capacity			710	

Event Summary

Outage Time	Restoration Time	Description of Event	Description of Event
08:05		Ghorasal-Tongi 230kV Ckt-1 Scheduled S/D from Tongi 230/132/33kV end Due to Ghorashal end side work	
08:20	17:15	Tongi 230/132/33kV S/S T-03 LT Scheduled S/D Due to Annual maintenance	
	08:28	Juldah 132/33kV S/S 133/33 KV T-2 416T HT is restored.	
08:36	17:31	Gopalganj 400/132kV S/S 400kV Amtoli Ckt-1 Scheduled S/D	
08:43	16:40	Aminbazar-Meghnaghat 400kV Ckt-2 Scheduled S/D from Meghnaghat 400/230kV end Due to Requested by Aminbazar	
08:45	12:42	Barapukuria-Rangpur 132 kV Ckt-2 Project Work S/D from Saidpur 132/33kV end.	
08:46	12:44	Barapukuria-Saidpur 132 kV Ckt-2 Project Work S/D from Saidpur 132/33kV end. and from Barapukuria 230/132/33kV end Due to project work	
08:47	12:41	Barapukuria-Saidpur 132 kV Ckt-1 Project Work S/D from Barapukuria 230/132/33kV end Due to project work	
08:49	16:25	Haripur-Sonargaon 132kV Ckt-2 Scheduled S/D from Haripur 230/132kV end Due to Annual Deadline checking. and from Sonargaon 132/33kV end Due to Annual maintenance work.	
08:50	19:30	Tongi 230/132/33kV S/S 132 kV Bus-1 Scheduled S/D Due to Project (To4 Transformer Installations Work)	
08:51	15:00	Kasba 132/33kV S/S Muradnagar-Kasba Ckt-1 Project Work S/D Due to Remove birds net, kites and others obstacles by Project	
08:58	14:58	Muradnagar 132/33kV S/S 132 KV Muradnagar- Kosba Ckt-01 Project Work S/D Due to project work	
10:40	12:16	Rahanpur 400/132kV S/S AT-01 LT Project Work S/D Due to Maintenance work	



Power Grid Bangladesh PLC
National Load Dispatch Center (NLDC)
System Summary Report

Date : 02-U1-ZUZ6

10:40 12:16 Rahanpur 400/132kV S/S AT-01 HT Project Work S/D Due to Maintenance work

12:00 Day Peak Generation is 9662 MW.

12:07 Rampura 230/132kV S/S Auto Transformer - 02 HT is restored.

12:08 Rampura 230/132kV S/S Auto Transformer - 02 LT is restored.

12:30 Mymensingh 132/33kV S/S Bus A is restored.

12:48 Mymensingh 132/33kV S/S 50 MW Solar Plant is restored.

13:04 15:00 Rahanpur 400/132kV S/S AT-02 LT Project Work S/D Due to Maintenance work

13:04 15:00 Rahanpur 400/132kV S/S AT-02 HT Project Work S/D Due to Maintenance work

15:44 17:17 Ishurdi 230/132kV S/S 230/132 kV T-01 LT Project Work S/D Due to HT side "B" phase PT voltage test

15:45 17:16 Ishurdi 230/132kV S/S 230/132 kV T-01 HT Project Work S/D Due to HT side "B" phase PT voltage test

16:35 18:48 Chandina 132/33kV S/S TR-3 HT Forced S/D Due to for red hot solution work in pbs cumilla-1 feeder

16:35 18:48 Chandina 132/33kV S/S TR-3 LT Forced S/D Due to for red hot solution work in pbs cumilla-1 feeder

18:00 Ghorasal- Ishwardi 230 kV Ckt-1 is restored.

18:00 Ghorasal- Ishwardi 230 kV Ckt-1 is restored.

18:10 Khulna (C) S/S Tr-2 415 T HT is restored.

18:10 22 MW interruption occurred under T-3 transformer of Tangail substation from 18:10 hrs to 18:46 hrs due to fire of PBS feeder named "Ghatail". Now, No interruption is occurring.

18:11 Khulna (C) S/S Tr-2 415 T LT is restored.

18:37 Ghorasal-Joydeb-B 132kV Ckt-2 is restored.

19:15 Siddhirganj 230/132kV S/S 335MW EGCB 1 is restored.

21:11 Meghnaghat-Shyampur 230kV Ckt-2 is restored.

01:17 Bogura 400/230kV S/S Bogura - Kaliakoir 400 kV Ckt-2 Forced S/D Due to Shutdown instructed by NLDC due to emergency voltage Control .

01:17 Bogura 400/230kV S/S Bogura - Kaliakoir 400 kV Ckt-1 Forced S/D Due to Shutdown instructed by NLDC due to emergency voltage Control .

05:00 Minimum generation 6686 MW

06:36 Ashuganj 230/132 kV OAT-11 transformer scheduled shutdown due to red-hot maintenance

07:23 Meghnaghat-Shyampur 230kV Ckt-1 Scheduled S/D from Meghnaghat 400/230kV end Due to Maintenance purpose

07:28 Ghorasal-Joydeb-B 132kV Ckt-2 Scheduled S/D from Joydebpur 132/33kV end Due to OPGW wire stringing by OFCN.

07:31 Rampura 230/132kV S/S Auto Transformer - 02 HT Scheduled S/D Due to Annual Maintenance

07:31 Rampura 230/132kV S/S Auto Transformer - 02 LT Scheduled S/D Due to Annual Maintenance

07:42 Meghnaghat-Shyampur 230kV Ckt-1 Scheduled S/D from Shyampur 230/132kV end Due to Dead Line Checking & Disc Cleaning

Sub-Divisional Engineer
Network Operation Division

Executive Engineer
Network Operation Division

Superintendent Engineer
Network Operation Division