



Power Grid Bangladesh PLC
National Load Dispatch Center (NLDC)
System Summary Report

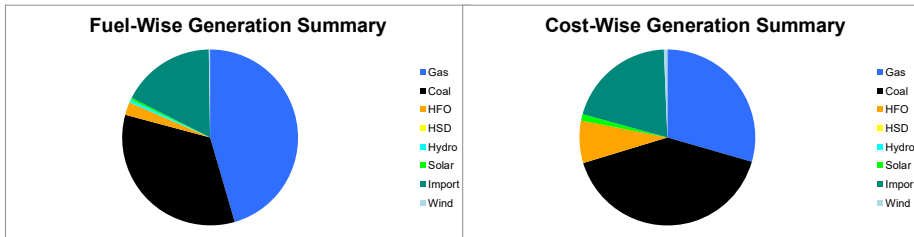
Date : 05-01-2026

Power Supply Scenario

Day Peak Generation	10297.08	MW	12:00 Hr.	Energy Generated	228.58191	MKWHr.
Day Peak Demand	10297.08	MW	12:00 Hr.	Energy Unserverd	0.00000	MKWHr.
Evening Peak Generation	11058	MW	18:00 Hr.	Energy Demand	228.58191	MKWHr.
Evening Peak Demand	11058	MW	18:00 Hr.	Maximum Temperature	18.80	°C
Minimum Generation of the Day	7203	MW	05:00 Hr.	Total Gas Supplied	764.52	MMCFD
Maximum Generation of the Day	11058	MW	18:00 Hr.	Production Cost per KWHR	5.41754	Tk.

Zone-wise Generation Summary (MKWHr.)

	Gas	Coal	HFO	HSD	Hydro	Solar	Import	Wind	Total
Dhaka Zone	24.44	0.00	3.11	0.00	0.00	0.04	0.00	0.00	27.59
Chattogram Zone	4.67	42.53	0.43	0.00	1.10	0.13	0.00	0.54	49.39
Cumilla Zone	23.03	0.00	0.34	0.00	0.00	0.09	2.44	0.00	25.90
Mymensingh Zone	3.42	0.00	1.24	0.00	0.00	0.04	0.00	0.00	4.70
Sylhet Zone	18.64	0.00	0.00	0.00	0.00	0.01	0.00	0.00	18.65
Khulina Zone	8.80	11.69	0.00	0.00	0.00	0.18	10.86	0.00	31.53
Barishal Zone	8.21	22.72	0.00	0.00	0.00	0.00	0.00	0.00	30.93
Rajshahi Zone	12.81	0.00	0.00	0.00	0.00	0.29	26.28	0.00	39.38
Rangpur Zone	0.00	0.00	0.34	0.00	0.00	0.16	0.00	0.00	0.50
Total	104.03	76.94	5.46	0.00	1.10	0.93	39.58	0.54	228.58



Production Cost (Tk.)

Fuel	Tk.	Fuel	Tk.
Gas	365058018.4	Hydro	109710
Coal	505182985.8	Solar	14594954.31
HFO	96753263.13	Import	248758116
HSD	0	Wind	7893974.4
Total:	123,83,51,022		Tk.

E-W Interconnector & Import Scenario

Energy Flow from East to West:	KWHr:	0	Import through HVDC C/B Interconnector:	MKWHr:	10.859636	Peak Hr Flow	4.00 MW at 18:00 hr
Energy Flow from West to East:	KWHr:	27196363.64	Import through Adani C/B Interconnector:	MKWHr:	26.277659	Peak Hr Flow	51.00 MW at 18:00 hr
Power Flow during Peak Demand (W-E):	MW:	1390	Import through Cumilla C/B Interconnector:	MKWHr:	2.43936	Peak Hr Flow	20.00 MW at 18:00 hr
Maximum Power Flow (W-E):	MW:	1572	Total Import through C/B Interconnector:	MKWHr:	39.576655	Peak Hr Flow	75.00 MW at 18:00 hr

Zone-wise Load-shed and Demand Summary (MW) at evening peak Hour (18:00 Hr.)

Zone	Load-Shed	Demand
Dhaka	0	4063
Chattogram	0	1072
Cumilla	0	966
Mymensingh	0	911
Sylhet	0	394
Khulina	0	1319
Barishal	0	314
Rajshahi	0	1022
Rangpur	0	780
Total	0	10841

Status of unavailable Power Plant

Planned S/D			Forced S/D		
Sl	Plant Name	Capacity	Sl	Plant Name	Capacity
1	Baghabari 100 MW GTPP	100			
2	Barapukuria TPP Unit-2	85			
3	Siddhirgonj 210 MW TPP	115			
Total			Total		
300			0		
Total Unavailable Capacity			300		

Event Summary

Outage Time	Restoration Time	Description of Event	Description of Event
08:16	16:22	Rajshahi 230/132/33kV S/S 230 Kv BIPTC Ckt-01 Scheduled S/D Due to Annual Maintenance.	
08:19	17:01	Gopalganj 400/132kV S/S 400kV Amtoli Ckt-2 Scheduled S/D Due to Annual Maintenance	
08:22	10:43	Purbasadipur-Thakurgaon-EPV 132kV Ckt-1 Project Work S/D from Thakurgaon 132/33kV end Due to EPVTL-Thakurgaon 01 Ckt. Reconductoring under KEC International Limited, India.	
08:22	17:16	Dhamrai-Kaliakoir 132 kV Ckt-1 Scheduled S/D from Dhamrai 132/33kV end Due to Annual maintenance	
08:24	10:42	Sylhet-Sylhet (South) 132kV Ckt-2 Scheduled S/D from Sylhet 132/33kV end Due to GIS Project work Purpose.	
08:40	16:39	Bogura 400/230kV S/S Bogura - Kaliakoir 400 kV Ckt-1 Scheduled S/D Due to Annual Maintenance work	



Power Grid Bangladesh PLC
National Load Dispatch Center (NLDC)
System Summary Report

Date :	05-01-2026	
08:40	16:39	Bogura 400/230kV S/S Bogura - Kaliakoir 400 kV Ckt-2 Scheduled S/D Due to Annual Maintenance work
08:43	16:42	Brahmanbaria-Shahjibazar 132 kV Ckt-2 Scheduled S/D from Shahjibazar 132/33kV end Due to Annual Maintenance and from Brahmanbaria 132/33kVend.
08:51	16:37	Aminbazar 400/230/132kV S/S Gopalganj-1 Scheduled S/D Due to Annual maintenance
08:52	16:35	Gopalganj 400/132kV S/S 400kV Aminbazar Ckt-1 Scheduled S/D Due to Annual
08:52	16:21	HVDC Bheramera- Rajshahi 230kV Ckt-1 Scheduled S/D from BIPTC end Due to Shutdown is taken from Rajshahi end
08:55		Bheramara HVDC Pole-2 was shutdown due to annual maintenance purpose
08:55	13:55	Jhenaidah-Khulna 230kV Ckt-1 Scheduled S/D from Khulna(S) 230/132kV end. and from Jhenaidah 230/132kV end Due to Annual Maintenance
08:56	17:02	Cox'sbazar-Dohazari 132 kV Ckt-1 Scheduled S/D from Coxsbazar 132/33kV end Due to Annual Maintenance of Doh- Cox Ckt-1 Dohazari Side. and from Dohazari 132/33kV end Due to Annual maintenance.
09:01	16:50	Kallyanpur-Lalbag 132kV Ckt-2 Scheduled S/D from Kallyanpur 132/33kV end Due to Annual Maintenance.
09:04		Kurigram-Lalmonirhat 132kV Ckt-1 Project Work S/D from Kurigram 132/33kV end.
09:04	15:13	Ruppur 132/11kV S/S TR-02 LT Scheduled S/D
09:05	17:03	Dhamrai 132/33kV S/S Transformer-1 LT Scheduled S/D Due to Annual maintenance
09:05	17:02	Dhamrai 132/33kV S/S Transformer-1 HT Scheduled S/D Due to Annual maintenance.
09:05		Kurigram-Rangpur 132kV Ckt-1 Scheduled S/D from Rangpur 132/33kV end Due to gantry piling work
09:06	15:08	Ruppur 132/11kV S/S TR-02 HT Scheduled S/D Due to Annual maintenance work
09:25	16:41	Tangail 132/33kV S/S Kaliakair-1 Scheduled S/D Due to Schedule S/D for Deadline Checking.
09:26	16:18	Chowmuhan-Feni 132 kV Ckt-1 Scheduled S/D from Feni 132/33kV end Due to S/D Taken for AMS=2025-26 (Bay)
09:27	15:50	Goalpara 132/33kV S/S Goalpara-NWPGCL Scheduled S/D Due to Annual Maintenance.
09:33	16:27	Madanganj 132/33kV S/S Madanganj -Haripur 132 kv Ckt-2 Scheduled S/D Due to Annual maintenance
09:33	16:32	Tongi 230/132/33kV S/S T-01 LT Scheduled S/D Due to Annual maintenance
09:34	16:32	Tongi 230/132/33kV S/S T-01 HT Scheduled S/D Due to Annual maintenance
09:35	12:57	Shyampur-Shyampur(New) 132kV Ckt-2 Scheduled S/D from Shyampur 230/132kV end Due to Annual maintenance at 132kV Shyampur SS DPDC end.
09:40	16:27	Haripur 230/132kV S/S Madanganj-2 Scheduled S/D Due to Annual Maintenance
09:49	15:50	Haripur 230/132kV S/S Ullon (Maniknagar-2) Forced S/D Due to order by NLDC
09:51	19:03	Chowmuhan-Feni 132 kV Ckt-1 Forced S/D from Daganbhuiyan 132/33kV end Due to shutdown for Chowmuhan Grid Work and from Chowmuhan 132/33kV end Due to Chowmuhan - Daganbhuiyan ckt-1 OPGW replacement .
09:55	17:37	Siddhirganj 230/132kV S/S 335MW EGCB 1 Scheduled S/D Due to EMERGENCY MAINTENANCE WORK
09:57	11:39	Agargaon 230/132kV S/S 230kV Transformer-2 (715T2) LT Scheduled S/D Due to Relay Testing
09:58	11:36	Agargaon 230/132kV S/S 230kV Transformer-2 (715T2) HT Scheduled S/D Due to Relay Testing
10:04	17:40	Bhaluka-Mymensingh 132 kV Ckt-1 Scheduled S/D from Mymensingh 132/33kV end Due to Dead line checking by Bhaluka Grid. and from Bhaluka 132/33kV end Due to Annual maintenance
10:05	16:05	Bog-Sherpur 132/33kV S/S Transformer-3 (424T) LT Scheduled S/D Due to Annual Maintenance
10:06	16:04	Bog-Sherpur 132/33kV S/S Transformer-3 (424T) HT Scheduled S/D Due to Annual Maintenance
10:21	20:07	Bhaluka 132/33kV S/S Sreepur Ckt- 01 Scheduled S/D
10:22	20:05	Sreepur 230/132/33kV S/S Sreepur-Valuka Ckt-1 Scheduled S/D Due to Annual Maintenance.
10:33	13:46	Keranigonj 230/132/33kV S/S 132 kV Hasnabad Ckt. 1 Forced S/D Due to The rope falls on the 132kV line.
11:08	14:18	Sathkira 132/33kV S/S Transformer-1 (T-1) HT Scheduled S/D Due to Due to annual maintenance work
11:08	14:20	Sathkira 132/33kV S/S Transformer-1 (T-1) LT Scheduled S/D Due to Due to annual maintenance work
11:19		Muradnagar 132/33kV S/S 132KV Transformar-01 LT Forced S/D Due to PBS newly constructed 33 KV ss commissioning work.
11:20		Muradnagar 132/33kV S/S 132KV Transformar-01 HT Forced S/D Due to PBS newly constructed 33 KV ss commissioning work

5.0MW load
interrup.



Power Grid Bangladesh PLC
National Load Dispatch Center (NLDC)
System Summary Report

Date :	05-01-2026
11:35	Purbasadipur-Thakurgaon-EPV 132kV Ckt-1 Project Work S/D from Thakurgaon 132/33kV end Due to Reconductoring works
11:59	12:32 Agargaon 230/132kV S/S 132kV Transformer-2 (415T2) LT Scheduled S/D Due to Relay test
12:00	12:31 Agargaon 230/132kV S/S 132kV Transformer-2 (415T2) HT Scheduled S/D Due to Relay test
12:00	Day peak generation 10291 MW
12:32	13:21 Agargaon 230/132kV S/S 132kV Transformer-1 (405T1) HT Scheduled S/D Due to Relay test
12:33	13:22 Agargaon 230/132kV S/S 132kV Transformer-1 (405T1) LT Scheduled S/D Due to Relay test
13:48	15:10 Agargaon 230/132kV S/S 230kV Transformer-1 (705T1) HT Scheduled S/D Due to Relay Testing
13:49	15:11 Agargaon 230/132kV S/S 230kV Transformer-1 (705T1) LT Scheduled S/D Due to Relay Testing
	14:35 Sholosohor 132/33kV S/S Sholoshahar-Khulshi Ckt-1 is restored.
15:05	16:38 Satkhira 132/33kV S/S Transformer-2 (T-2) HT Scheduled S/D
15:05	16:39 Satkhira 132/33kV S/S Transformer-2 (T-2) LT Scheduled S/D
15:12	17:03 Cox'sbazar-Dohazari 132 kV Ckt-1 Scheduled S/D from Coxsbazar 132/33kV end Due to Annual maintenance
15:57	17:20 Bogura 230/132kV S/S 230KV Main 2 Forced S/D Due to 230kV sirajganj ckt-01 main CB problem.
	16:40 Mirpur 132/33kV S/S T2 HT is restored.
	16:40 Mirpur 132/33kV S/S T2 LT is restored.
	17:20 Bogura-Sirajganj 230 kV Ckt-1 is restored.
17:45	19:29 Siddhirganj 230/132kV S/S 335MW EGCB 2 Scheduled S/D Due to emergency maintenance maintenance work
	17:50 Bibiyana-Fenchuganj 230 kV Ckt-1 is restored.
18:00	Evening Peak Generation is 11058 MW.
18:08	19:14 Bibiyana-Fenchuganj 230 kV Ckt-2 Scheduled S/D from Fenchuganj 230/132/33kV end Due to maintenance work of Bibiyana grid end
	18:39 Ghorasal-Joydeb-B 132kV Ckt-2 is restored.
23:20	BIPTC S/S 10CF11 Tripped showing 87.1 (Differential Relay). relays Due to Impedance 21R Trip.
01:58	Bheramara 410 MW CCPP, FGMO is OFF with remarks:- FGMO Off @ 01:56 AM
07:13	Bheramara 410 MW CCPP, FGMO is ON with remarks:-
07:33	Ghorasal-Joydeb-B 132kV Ckt-2 Scheduled S/D from Joydebpur 132/33kV end Due to OPGW wire stringing work by OFCN.

Sub-Divisional Engineer
Network Operation Division

Executive Engineer
Network Operation Division

Superintendent Engineer
Network Operation Division