



Power Grid Bangladesh PLC
National Load Dispatch Center (NLDC)
System Summary Report

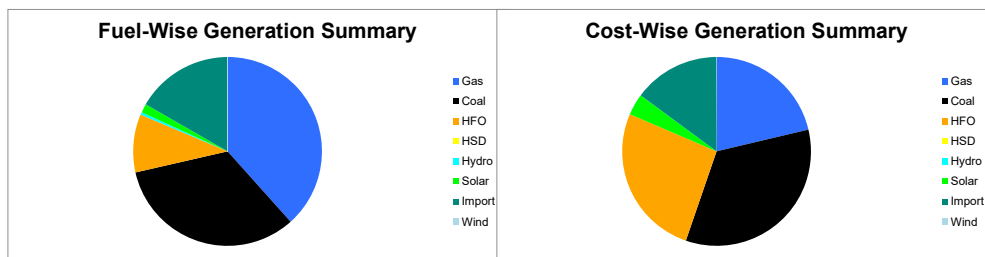
Date : 18-01-2020

Power Supply Scenario

Day Peak Generation	10799.57	MW	12:00 Hr.	Energy Generated	242.09010	MKWHr.
Day Peak Demand	10799.57	MW	12:00 Hr.	Energy Unserviced	0.00000	MKWHr.
Evening Peak Generation	11433.7	MW	20:00 Hr.	Energy Demand	242.09010	MKWHr.
Evening Peak Demand	11433.7	MW	20:00 Hr.	Maximum Temperature	27.70	°C
Minimum Generation of the Day	7835.78	MW	04:00 Hr.	Total Gas Supplied	687.02	MMCFD
Maximum Generation of the Day	11433.7	MW	20:00 Hr.	Production Cost per KWHr	6.36331	Tk.

Zone-wise Generation Summary (MKWHr.)

	Gas	Coal	HFO	HSD	Hydro	Solar	Import	Wind	Total
Dhaka Zone	25.27	0.00	11.33	0.00	0.00	0.16	0.00	0.00	36.75
Chattogram Zone	4.92	35.17	2.96	0.00	1.10	0.14	0.00	0.07	44.37
Cumilla Zone	20.90	0.00	3.41	0.00	0.00	0.40	2.32	0.00	27.02
Mymensingh Zone	1.15	0.00	1.65	0.00	0.00	0.26	0.00	0.00	3.06
Sylhet Zone	19.05	0.00	0.00	0.00	0.00	0.06	0.00	0.00	19.11
Khulna Zone	8.30	25.04	0.08	0.00	0.00	0.45	20.83	0.00	54.70
Barishal Zone	8.60	19.27	0.53	0.00	0.00	0.00	0.00	0.00	28.40
Rajshahi Zone	4.67	0.00	1.31	0.00	0.00	1.09	17.18	0.00	24.25
Rangpur Zone	0.00	0.64	2.74	0.00	0.00	1.05	0.00	0.00	4.43
Total	92.86	80.12	24.02	0.00	1.10	3.60	40.32	0.07	242.09



Production Cost (Tk.)

Fuel	Tk.	Fuel	Tk.
Gas	327974621.3	Hydro	110082
Coal	524029112	Solar	56703328.98
HFO	402586399.4	Import	228025540.7
HSD	0	Wind	1066180.8
Total:	154,04,95,265		Tk.

E-W Interconnector & Import Scenario

Energy Flow from East to West:	KWHr:	0	Import through HVDC C/B Interconnector:	MKWHr:	20.82909	Peak Hr Flow	873.00 MW at 20:00 hrs.
Energy Flow from West to East:	KWHr:	35238436.38	Import through Adani C/B Interconnector:	MKWHr:	17.175677	Peak Hr Flow	763.00 MW at 20:00 hrs.
Evening Peak Demand (W-E):	MW:	1372	Import through Cumilla C/B Interconnector:	MKWHr:	2.31552	Peak Hr Flow	106.00 MW at 20:00 hrs.
Maximum Power Flow (W-E):	MW:	2060	Total Import through C/B Interconnector:	MKWHr:	40.320287	Peak Hr Flow	1742.00 MW at 20:00 hrs.

Zone-wise Load-shed and Demand Summary (MW) at evening peak Hour (20:00 Hr.)

Zone	Load-Shed	Demand
Dhaka	0	4126
Chattogram	0	1146
Cumilla	0	977
Mymensingh	0	916
Sylhet	0	419
Khulna	0	1289
Barishal	0	338
Rajshahi	0	1051
Rangpur	0	701
Total	0	10963

Status of unavailable Power Plant

Planned S/D			Forced S/D		
Sl	Plant Name	Capacity	Sl	Plant Name	Capacity
1	Baghabari 100 MW GTPP	100			
2	Barapukuria TPP Unit-2	85			
3	Siddhirgonj 210 MW TPP	115			
Total		300	Total		0
Total Unavailable Capacity			300		

Event Summary

Outage Time	Restoration Time	Description of Event	Description of Event
08:20	17:25	Bogura-Rahanpur 400kV Ckt-1 Scheduled S/D from Bogura 400/230kV end Due to Annual maintenance and from Rahanpur 400/132kV end Due to Annual maintenance work.	
08:22	17:34	Taraganj 132/33kV S/S Taraganj-Saidpur CKT-01 Scheduled S/D Due to Annual maintenance	
08:22	17:00	Daudkandi-Sonargaon 132 kV Ckt-2 Scheduled S/D from Daudkandi 132/33kV end Due to Maintenance work at Sonargaon SS side	
08:24	17:59	Taraganj 132/33kV S/S Taraganj-Rangpur CKT-02 Scheduled S/D Due to Annual maintenance	
08:25	17:34	Rangpur-Saidpur 132kV Ckt-1 Scheduled S/D from Saidpur 132/33kV end Due to Annual maintenance	



Power Grid Bangladesh PLC
National Load Dispatch Center (NLDC)
System Summary Report

Date : 18-01-2020

08:26	17:58	Rangpur-Saidpur 132kV Ckt-2 Scheduled S/D from Rangpur 132/33kV end Due to Annual Maintenance ☹.	
08:28	16:09	Bagerhat-Labanchura 132 kV Ckt-2 Scheduled S/D from Bagerhat 132/33kV end Due to Annual maintenance	
08:31	17:06	Payra 400/132/33kV S/S 132/33 kV Transformer-03 LT Scheduled S/D Due to Maintenance	
08:31	17:01	Payra 400/132/33kV S/S 132/33 kV Transformer-03 HT Scheduled S/D Due to Maintenance	
08:32	23:25	Fatullah 132/33kV S/S 132 kV Hasnabad Scheduled S/D Due to Shutdown For Annual Maintenance	
08:32	17:20	Sirajgonj 230 S/S SNWPCL (Unit-04) Scheduled S/D Due to Annual Maintenance work.	
08:34	16:58	Daudkandi-Sonargaon 132 kV Ckt-2 Scheduled S/D from Sonargaon 132/33kV end Due to Annual maintenance	
08:35	23:21	Hasnabad 132/33kV S/S Fatulla (Pre-Brahmogaon) Scheduled S/D Due to Deadline checking	
08:36	16:01	Brahmanbaria-Narsinghdi 132 kV Ckt-2 Scheduled S/D from Brahmanbaria 132/33kV end Due to ANNUAL MAINTENANCE	
08:39	16:24	Hasnabad-Keraniganj 230kV Ckt-1 Scheduled S/D from Keraniganj 230/132/33kV end Due to Maintenance work at Hasnabad end. and from Hasnabad 230/132kV end Due to Hasnabad-Keraniganj 230KV circuit shutdown has been requested from Hasnabad 132KV substation for work on Hasnabad-Fatullah 132KV line.	
08:44	18:04	KSRM 132/33kV S/S Transformer-02 HT Scheduled S/D Due to for schedule maintenance	
08:48	16:21	Gopalganj 400/132kV S/S 400kV Rampal Ckt-1 Scheduled S/D Due to Annual Maintenance	
08:55	16:37	BIPTC S/S Baharampur-1 Scheduled S/D Due to Annual Maintenance	
08:55	18:20	Aminbazar 400/230/132kV S/S ATR-01 HT Scheduled S/D Due to Annual maintenance	
08:55	18:23	Aminbazar 400/230/132kV S/S ATR-01 LT Scheduled S/D Due to Annual maintenance	
08:57	16:20	Gopalganj(N)-Rampal Ckt-1 Forced S/D from Rampal 400/230kV end Due to Annual Maintenance	
09:03	18:03	Ashuganj-Bhulta 400 kV Ckt-1 Scheduled S/D from Bhulta 400/230kV end Due to Annual Maintenance Work	
09:07	16:16	Gopalganj 400/132kV S/S 400kV Amtoli Ckt-1 Scheduled S/D Due to Annual Maintenance	
09:09	17:57	Kallyanpur 132/33kV S/S GT-3 (132kV) HT Scheduled S/D	
09:09	12:30	Ruppur 132/11kV S/S 132kV BUS-2 Scheduled S/D Due to annual maintenance work	
09:19	16:37	Sirajganj-Ullahpara 132kV Ckt-2 Scheduled S/D from Sirajganj 132/33kV end Due to Annual Maintenance	
09:22	16:47	Aminbazar-Kaliakoir 230kV Ckt-2 Scheduled S/D from Kaliakoir 400/230/132kV end Due to Annual Maintenance.	
09:36	15:56	Kabirpur -Kodda 132kV Ckt-2 Scheduled S/D from Kabirpur 132/33kV end Due to Annual Maintenance Work.	
09:48	15:57	Cumilla(S) 132/33kV S/S Tripura Ckt-2 Scheduled S/D Due to Annual Bay maintenance	
09:53	16:44	Kaliakoir-Kodda(300MW) 230kV Ckt-1 Scheduled S/D from Kaliakoir 400/230/132kV end Due to Annual MaintenanceDeadline Checking & Disk Cleaning	
09:58	16:05	Barapukuria S/S-P/S 230 kV Ckt-1 Scheduled S/D from Barapukuria 230/132/33kV end Due to Annual maintenance work.	
10:21		Aminbazar 400/230/132kV S/S 230 kv Bus 01 Scheduled S/D Due to DS changing	
10:26	12:03	Joydebpur 132/33kV S/S GT-3 HT Scheduled S/D Due to Oil leakage maintenance of B-Phase C.T.	
11:02		Tongi 230/132/33kV S/S T-1 LT Scheduled S/D Due to signal shifting work	
11:02		Tongi 230/132/33kV S/S T-1 HT Scheduled S/D Due to Signal shifting work	
12:07	13:35	Pabna- Shahjadpur 132kV Ckt-1 Forced S/D from Pabna 132/33kV end.	
12:21	13:50	Shahjadpur 132/33kV S/S Main Bus Forced S/D Due to Maintenance Work	25.0MW load interrup.
12:28	14:42	Kurigram-Lalmonirhat 132kV Ckt-1 Project Work S/D from Kurigram 132/33kV end.	
	13:19	Ghorasal-Tongi 230kV Ckt-1 is restored.	
13:32	15:55	Sreepur 230/132/33kV S/S 230/132 kV T-2 LT Scheduled S/D Due to Annual maintenance & works of Protection team for SPS	
13:34	15:56	Sreepur 230/132/33kV S/S Auxiliary Transformer - 2 HT Scheduled S/D Due to Annual maintenance & works of Protection team for SPS	



Power Grid Bangladesh PLC
National Load Dispatch Center (NLDC)
System Summary Report

Date : 18-01-2020

13:34	15:53	Sreepur 230/132/33kV S/S 230/132 kV T-2 HT Scheduled S/D Due to Annual maintenance & works of Protection team for SPS	
	14:40	Kurigram-Rangpur 132kV Ckt-1 is restored.	
	14:40	Kurigram-Rangpur 132kV Ckt-1 is restored.	
14:54	21:10	Purbasadipur-Thakurgaon-EPV 132kV Ckt-2 Project Work S/D from Thakurgaon 132/33kV end Due to STEGEP Project Reconductoring work	
	15:57	Moghbazarpur-Rampura 132kV Ckt-1 is restored.	
16:05	16:36	Shahjibazar 132/33kV S/S TR-04 LT Forced S/D Due to Shutdown for Emergency.	62.0MW load interrupt.
16:06	16:35	Shahjibazar 132/33kV S/S TR-04 HT Forced S/D Due to Shutdown for Emergency.	62.0MW load interrupt.
	16:11	Rajshahi-Rajshahi(New) 132kV Ckt-1 is restored.	
	16:21	Rampal 400/230kV S/S Gopalganj Line-1 Reactor is restored.	
	16:29	Bibiyana-Fenchuganj 230 kV Ckt-2 is restored.	
16:53	16:53	Hasnabad-Postogola 132kV ckt-1 Scheduled S/D from Postogola 132/33kV end Due to Yearly maintenance	
17:08		Postogola 132/33kV S/S GT-1 HT Scheduled S/D Due to Yearly maintenance	
	18:35	Sylhet 132/33kV S/S Sylhet-90MW P/S is restored.	
21:25		Purbasadipur-Thakurgaon-EPV 132kV Ckt-1 Scheduled S/D from Thakurgaon 132/33kV end Due to Temperature Rise at Thakurgaon-EPV Ckt-1 R-Phase LA. Need to Maintenance	
	23:24	Korerhat 400/230/132kV S/S 400kV BUS-1 is restored.	
23:25		Fatullah-Madanganj 132 kV Ckt-2 Forced S/D from Fatullah 132/33kV end.	
05:00		Minimum Generation: 7911 MW.	
07:00		Korerhat 400/230/132kV S/S 400kV BUS-2 Project Work S/D Due to Busbar internal testing	
07:10		Moghbazarpur-Rampura 132kV Ckt-1 Scheduled S/D from Rampura 230/132kV end Due to Annual Maintenance and Line PT(Y) Phase Replacement.	
07:19		Shahjadpur 132/33kV S/S Main Bus Forced S/D Due to Maintenance work	20.0MW load interrupt.
07:21		Sylhet 132/33kV S/S Sylhet-90MW P/S Project Work S/D Due to OPGW wire change	
07:25		Ashuganj-Bhulta 400 kV Ckt-1 Scheduled S/D from Bhulta 400/230kV end Due to Dead Line Checking.	
07:47		Patuakhali-Payra 132kV Ckt-1 Scheduled S/D from Payra 400/132/33kV end Due to Maintenance and from Patuakhali 132/33kV end Due to Annual Maintenance-2026	
07:50		Kachua 230/132/33kV S/S TR-1 HT Project Work S/D Due to For flood light setting.	
07:52		Purbasadipur-Thakurgaon-EPV 132kV Ckt-2 Scheduled S/D from Purbasadipur 132/33kV end.	

Sub-Divisional Engineer
Network Operation Division

Executive Engineer
Network Operation Division

Superintendent Engineer
Network Operation Division