



Power Grid Bangladesh PLC  
National Load Dispatch Center (NLDC)  
System Summary Report

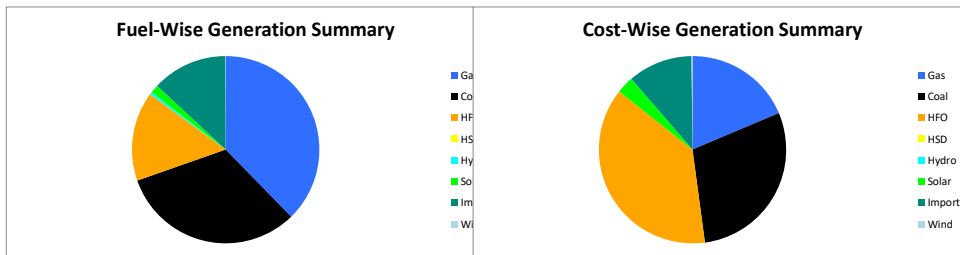
Date : 20-01-2026

Power Supply Scenario

Day Peak Generation	10711.21	MW	09:00 Hr.	Energy Generated	241.69803	MKWHr.
Day Peak Demand	10711.21	MW	09:00 Hr.	Energy Unserverd	3.23600	MKWHr.
Evening Peak Generation	10932	MW	19:30 Hr.	Energy Demand	244.93403	MKWHr.
Evening Peak Demand	11498	MW	19:30 Hr.	Maximum Temperature	26.80	°C
Minimum Generation of the Day	7911	MW	05:00 Hr.	Total Gas Supplied	678.52	MMCFD
Maximum Generation of the Day	10932	MW	19:30 Hr.	Production Cost per KWHr	7.17157	Tk.

Zone-wise Generation Summary (MKWHr.)

	Gas	Coal	HFO	HSD	Hydro	Solar	Import	Wind	Total
Dhaka Zone	25.12	0.00	14.36	0.00	0.00	0.14	0.00	0.00	39.63
Chattogram Zone	4.77	29.93	6.64	0.00	1.04	0.15	0.00	0.20	42.73
Cumilla Zone	20.68	0.00	5.45	0.00	0.00	0.36	2.72	0.00	29.21
Mymensingh Zone	0.76	0.00	1.98	0.00	0.00	0.23	0.00	0.00	2.96
Sylhet Zone	19.34	0.00	0.00	0.00	0.00	0.05	0.00	0.00	19.39
Khulna Zone	8.31	26.13	0.96	0.00	0.00	0.45	11.05	0.00	46.90
Barishal Zone	8.52	21.20	1.57	0.00	0.00	0.00	0.00	0.00	31.30
Rajshahi Zone	3.62	0.00	2.78	0.00	0.00	1.10	17.67	0.00	25.17
Rangpur Zone	0.00	0.00	3.54	0.00	0.00	0.88	0.00	0.00	4.42
<b>Total</b>	<b>91.11</b>	<b>77.26</b>	<b>37.29</b>	<b>0.00</b>	<b>1.04</b>	<b>3.36</b>	<b>31.44</b>	<b>0.20</b>	<b>241.70</b>



Production Cost (Tk.)

Fuel	Tk.	Fuel	Tk.
Gas	322744271.4	Hydro	103970
Coal	507551071.8	Solar	52668817.32
HFO	654081616.3	Import	193301844.7
HSD	0	Wind	2901988.8
<b>Total:</b>	<b>173,33,53,580</b>	<b>Total:</b>	<b>Tk.</b>

E-W Interconnector & Import Scenario

Energy Flow from East to West:	KWHr:	0	Import through HVDC C/B Interconnector:	MKWHr:	11.048727	Peak Hr Flow	450.00 MW at 19:30 hrs.
Energy Flow from West to East:	KWHr:	33272400.03	Import through Adani C/B Interconnector:	MKWHr:	17.673019	Peak Hr Flow	754.00 MW at 19:30 hrs.
Flow during Peak Demand (W-E):	MW:	1491	Import through Cumilla C/B Interconnector:	MKWHr:	2.71968	Peak Hr Flow	126.00 MW at 19:30 hrs.
Maximum Power Flow (W-E):	MW:	1928	Total Import through C/B Interconnector:	MKWHr:	31.441426	Peak Hr Flow	1330.00 MW at 19:30 hrs.

Zone-wise Load-shed and Demand Summary (MW) at evening peak Hour (19:30 Hr.)

Zone	Load-Shed	Demand
Dhaka	180	4229
Chattogram	0	1215
Cumilla	0	984
Mymensingh	100	960
Sylhet	0	417
Khulna	110	1260
Barishal	10	268
Rajshahi	120	1095
Rangpur	22	697
<b>Total</b>	<b>542</b>	<b>11125</b>

Status of unavailable Power Plant

Planned S/D			Forced S/D		
Sl	Plant Name	Capacity	Sl	Plant Name	Capacity
1	Baghabari 100 MW GTPP	100			
2	Barapukuria TPP Unit-2	85			
3	Siddhirgonj 210 MW TPP	115			
Total			Total		
300			0		
<b>Total Unavailable Capacity</b>			<b>300</b>		

Event Summary

Outage Time	Restoration Time	Description of Event	Description of Event
08:02	17:39	Fenchuganj 230/132/33kV S/S TR-01 LT Scheduled S/D Due to 132 KV BUS -1 Annual Maintenance	
08:07	17:39	Fenchuganj 230/132/33kV S/S TR-01 HT Scheduled S/D Due to 132 KV BUS -1 Annual Maintenance	
08:09	17:26	Fenchuganj 230/132/33kV S/S 132 KV Bus-1 Scheduled S/D Due to Annual maintenance	
08:10	17:46	Payra 400/132/33kV S/S 132/33 kV Transformer-04 LT Scheduled S/D Due to Maintenance	
08:11	17:45	Payra 400/132/33kV S/S 132/33 kV Transformer-04 HT Scheduled S/D Due to Maintenance	



Power Grid Bangladesh PLC  
National Load Dispatch Center (NLDC)  
System Summary Report

Date :	20-01-2026	
08:20	16:45 Chandpur (Desh)- Chandpur 132kV Ckt-1 Scheduled S/D from Chandpur 132/33kV end Due to Annual maintenance work.	
08:24	16:52 Aminbazar 400/230/132kV S/S ATR-02 HT Scheduled S/D Due to Annual maintenance	
08:24	17:54 Aminbazar 400/230/132kV S/S ATR-02 LT Scheduled S/D Due to Annual maintenance	
08:34	15:16 Ramganj 132/33kV S/S Ramgonj-Desh Energy Ckt-02 Scheduled S/D Due to IVT Replacement Work (B phase) .	
08:36	15:49 Taraganj 132/33kV S/S Taraganj-Saidpur CKT-01 Scheduled S/D Due to For annual maintenance	
08:36	15:49 Rangpur-Saidpur 132kV Ckt-1 Scheduled S/D from Saidpur 132/33kV end Due to Annual maintenance	
08:36	16:38 Rangpur-Saidpur 132kV Ckt-2 Scheduled S/D from Rangpur 132/33kV end Due to Instruction of ALDC Bogura	
08:38	16:39 Taraganj 132/33kV S/S Taraganj-Rangpur CKT-02 Scheduled S/D Due to For annual maintenance	
08:39	18:09 Aggreko-keraniganj 132kV Ckt-1 Scheduled S/D from Keranigonj 230/132/33kV end Due to Dead line checking by Keraniganj grid.	
08:44	16:34 Keraniganj-Sreenagar 132kV Ckt-1 Scheduled S/D from Srinagar 132/33kV end Due to Dead Line Checking, and from Keranigonj 230/132/33kV end Due to Dead line checking by Keraniganj grid.	
08:46	16:35 Gopalganj 400/132kV S/S 400kV Rampal Ckt-1 Scheduled S/D	
08:47	16:45 Rampal 400/230kV S/S Gopalganj Line-1 Reactor Forced S/D Due to Khulna ALDC Demand(Annual Maintenance)	
08:47	16:34 Gopalganj(N)-Rampal Ckt-1 Forced S/D from Rampal 400/230kV end Due to Khulna ALDC Demand(Annual Maintenance)	
08:52	16:55 Bogura-Rahanpur 400kV Ckt-2 Scheduled S/D from Rahanpur 400/132kV end Due to Annual maintenance work and from Bogura 400/230kV end Due to Annual maintenance.	
09:00	Day Peak Generation: 10707 MW.	
09:03	16:35 Mymensingh RPCL-Tangail 132kV Ckt-1 Scheduled S/D from Muktagacha 132/33kV end.	
09:05	16:46 Daudkandi-Sonargaon 132 kV Ckt-2 Scheduled S/D from Sonargaon 132/33kV end Due to Annual Maintenance	
09:17	16:42 Gopalganj(N)-Madaripur 132kV Ckt-3 Scheduled S/D from Madaripur 132/33kV end Due to Annual maintenance and from Gopalganj 400/132kVend.	
09:17	16:44 Madaripur 132/33kV S/S Gopaganj North CKT-04 Scheduled S/D Due to Annual maintenance	
09:26	14:41 Goalpara-Labanchura 132kV Ckt-2 Scheduled S/D from Goalpara 132/33kV end Due to Annual Maintenance works.	
09:27	16:44 Gopalganj 400/132kV S/S 132kV Madaripur Ckt-4 Scheduled S/D	
09:28	19:40 Sylhet 132/33kV S/S Sylhet-90MW P/S Scheduled S/D Due to OPGW change Purpose.	
09:40	15:23 Muradnagar 132/33kV S/S 132 KV Muradnagar- Cumilla(N) Ckt-01 Scheduled S/D Due to Maintenance Work	
09:44	12:13 Fenchuganj-Sreemangal 132kV Ckt-1 Scheduled S/D from Fenchuganj 230/132/33kV end Due to Annual Maintenance	
09:45	17:10 Kodda(300MW)-Tongi 230kV Ckt-1 Scheduled S/D from Tongi 230/132/33kV end.	
09:51	16:29 BIPTC S/S Baharampur-2 Scheduled S/D Due to Annual Maintenance	
09:53	16:35 Kabirpur -Kodda 132kV Ckt-2 Scheduled S/D from Kabirpur 132/33kV end Due to Annual Main	
09:55	12:12 Fenchuganj-Sreemangal 132kV Ckt-1 Forced S/D from Sreemongol 132/33kV end Due to NLDC	
10:08	Chowmuhani-Ramganj 132 kV Ckt-1 Scheduled S/D from Chowmuhani 132/33kV end Due to 132/33 kV Chowmuhani AIS Substation with new panels and integrating them into the SAS.	
10:08	11:39 Khulna(C )-Noapara 132kV Ckt-1 Scheduled S/D from Noapara 132/33kV end. and from Khulna (C) end Due to For Kite removal	
10:14	18:08 Aminbazar-Kaliakoir 230kV Ckt-2 Scheduled S/D from Kaliakoir 400/230/132kV end Due to Deadline Check.	
10:52	12:49 Fenchuganj-Fenchuganj 132 kV Ckt-4 Scheduled S/D from Fenchuganj 230/132/33kV end Due to Annual Maintenance	
10:55	12:25 Ishurdi 132/33kV S/S 132/33 kV T-1 LT Scheduled S/D Due to 33 kv bus-2 A/M work	10.0MW load interrup.
10:56	12:25 Ishurdi 132/33kV S/S 132/33 kV T-1 HT Scheduled S/D Due to 33 kv bus-2 A/M work at NESCO	10.0MW load interrup.



**Power Grid Bangladesh PLC  
National Load Dispatch Center (NLDC)  
System Summary Report**

<b>Date :</b>	20-01-2026
10:57	11:36 Jhenaidah-Khulna 230kV Ckt-1 Tripped from Jhenaidah 230/132kV end showing 7sJ85 relays Due to False Operation
11:10	19:55 Chaudhagram-Feni 132 kV Ckt-1 Project Work S/D from Feni 230/132kV end Due to circuit breaker work
11:27	12:44 Ullahpara 132/33kV S/S Power Transformer -1 LT Scheduled S/D Due to Oil Change/filling of Incomer -1 PT.
11:28	12:44 Ullahpara 132/33kV S/S Power Transformer -1 HT Scheduled S/D Due to Oil Change/filling of Incomer -1 PT.
11:38	SS Power Tripped
11:40	SS Power Tripped with remarks:- unit-2
11:40	SS Power Tripped
11:41	SS Power Synchronized with remarks:- unit-1
11:41	SS Power Synchronized with remarks:- unit-1(False)
12:53	15:29 Fenchuganj-Fenchuganj 132 kV Ckt-2 Scheduled S/D from Fenchuganj 230/132/33kV end Due to Annual Maintenance
12:59	13:48 Ullahpara 132/33kV S/S Power Transformer-2 LT Scheduled S/D Due to Oil Change/filling of Incomer -2 PT.
12:59	13:48 Ullahpara 132/33kV S/S Power Transformer-2 HT Scheduled S/D Due to Oil Change/filling of Incomer -2 PT.
15:02	16:25 Fenchuganj 230/132/33kV S/S AT-02 LT Scheduled S/D Due to 132kV Bus-01 Annual Maintenance
15:03	16:24 Fenchuganj 230/132/33kV S/S AT-02 HT Scheduled S/D Due to 132kV bus-02 Annual Maintenance
15:33	20:05 Korerhat 400/230/132kV S/S ATR-3(7103T) HT Project Work S/D Due to Due to project work.
15:37	17:13 Fenchuganj-Fenchuganj 132 kV Ckt-1 Scheduled S/D from Fenchuganj 230/132/33kV end Due to 132kV BUS-01 Annual Maintenance
	16:35 Mymensingh RPCL-Tangail 132kV Ckt-1 is restored.
17:00	17:57 Chandpur 132/33kV S/S 422T(T-5) HT Forced S/D Due to To remove the kite and kite string
17:00	17:57 Chandpur 132/33kV S/S 422T(T-5) LT Forced S/D Due to To remove the kite and kite string
17:08	17:55 Chandpur 132/33kV S/S Bus-B Forced S/D Due to To remove the kite and kite string
17:13	17:25 Ghorasal-Tongi 230kV Ckt-2 Scheduled S/D from Tongi 230/132/33kV end Due to Shutdown taken by NLDC
	17:28 Ashuganj-Bhulta 400 kV Ckt-1 is restored.
19:30	Evening Peak Generation: 10932 MW
05:00	Minimum Generation is 7915 MW
07:29	Sylhet 132/33kV S/S Sylhet-90MW P/S Project Work S/D Due to OPGW Replace
07:29	Sylhet 132/33kV S/S Sylhet-90MW P/S Project Work S/D Due to OPGW Replace
07:42	Candpur (Desh)- Chandpur 132kV Ckt-1 Scheduled S/D from Chandpur 132/33kV end Due to Annual Maintenance
07:55	Hasnabad 230/132kV S/S Bus-2 Scheduled S/D Due to annual maintenance

**Sub-Divisional Engineer**  
Network Operation Division

**Executive Engineer**  
Network Operation Division

**Superintendent Engineer**  
Network Operation Division