



Power Grid Bangladesh PLC
National Load Dispatch Center (NLDC)
System Summary Report

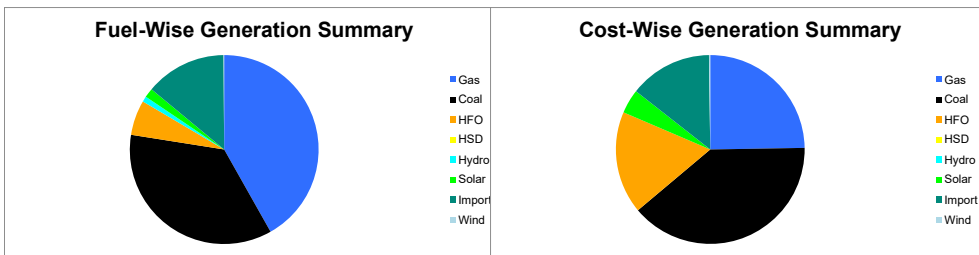
Date : 23-01-2026

Power Supply Scenario

Day Peak Generation	10167.95	MW	12:00 Hr.	Energy Generated	222.90369	MKWHr.
Day Peak Demand	10167.95	MW	12:00 Hr.	Energy Unserverd	0.11700	MKWHr.
Evening Peak Generation	10164.3	MW	19:00 Hr.	Energy Demand	223.02069	MKWHr.
Evening Peak Demand	10164.3	MW	19:00 Hr.	Maximum Temperature	27.40	°C
Minimum Generation of the Day	7942.68	MW	05:00 Hr.	Total Gas Supplied	696.45	MMCFD
Maximum Generation of the Day	10732.34	MW	13:00 Hr.	Production Cost per KWHr	5.96339	Tk.

Zone-wise Generation Summary (MKWHr.)

	Gas	Coal	HFO	HSD	Hydro	Solar	Import	Wind	Total
Dhaka Zone	26.04	0.00	4.55	0.00	0.00	0.18	0.00	0.00	30.77
Chattogram Zone	5.20	33.87	3.15	0.00	2.07	0.15	0.00	0.20	44.64
Cumilla Zone	21.05	0.00	1.50	0.00	0.00	0.41	2.40	0.00	25.35
Mymensingh Zone	0.86	0.00	1.33	0.00	0.00	0.25	0.00	0.00	2.45
Sylhet Zone	17.76	0.00	0.00	0.00	0.00	0.07	0.00	0.00	17.83
Khulna Zone	2.34	24.85	0.22	0.00	0.00	0.51	11.46	0.00	39.37
Barishal Zone	8.61	19.51	0.59	0.00	0.00	0.00	0.00	0.00	28.71
Rajshahi Zone	11.38	0.00	0.86	0.00	0.00	1.00	17.10	0.00	30.33
Rangpur Zone	0.00	1.28	1.19	0.00	0.00	0.99	0.00	0.00	3.47
Total	93.22	79.52	13.39	0.00	2.07	3.55	30.95	0.20	222.90



Production Cost (Tk.)

Fuel	Tk.	Fuel	Tk.
Gas	328796508.3	Hydro	206960
Coal	520624084.7	Solar	55572071.91
HFO	232929982.2	Import	188117382.6
HSD	0	Wind	3014961.6
Total:	132,92,61,951	Tk.	

E-W Interconnector & Import Scenario

Energy Flow from East to West:	KWHr:	8363.64	Import through HVDC C/B Interconnector:	MKWHr:	11.456	Peak Hr Flow	473.00 MW at 19:00 hrs.
Energy Flow from West to East:	KWHr:	29442164.09	Import through Adani C/B Interconnector:	MKWHr:	17.098546	Peak Hr Flow	758.00 MW at 19:00 hrs.
Low during Peak Demand (W-E):	MW:	1311	Import through Cumilla C/B Interconnector:	MKWHr:	2.3952	Peak Hr Flow	100.00 MW at 19:00 hrs.
Maximum Power Flow (W-E):	MW:	1754	Total Import through C/B Interconnector:	MKWHr:	30.949746	Peak Hr Flow	1331.00 MW at 19:00 hrs.

Zone-wise Load-shed and Demand Summary (MW) at evening peak Hour (19:00 Hr.)

Zone	Load-Shed	Demand
Dhaka	0	3372
Chattogram	0	1076
Cumilla	0	906
Mymensingh	0	923
Sylhet	0	386
Khulna	0	1171
Barishal	0	305
Rajshahi	0	988
Rangpur	0	676
Total	0	9803

Status of unavailable Power Plant

Planned S/D			Forced S/D		
Sl	Plant Name	Capacity	Sl	Plant Name	Capacity
1	Pabna Solar 100 MW	100	1	Ashuganj 51 MW PP (Midland)	51
2	Baghabari 100 MW GTPP	100			
3	Barapukuria TPP Unit-2	85			
4	Siddhirgonj 210 MW TPP	115			
Total		400	Total		51
Total Unavailable Capacity			451		

Event Summary

Outage Time	Restoration Time	Description of Event	Description of Event
08:17	10:21	Ishurdi 132/33kV S/S 132/33 kV T-3 HT Scheduled S/D Due to Work by Dasuria PBS at 33 kv bus-1	20.0MW load interrup.
08:17	10:23	Ishurdi 132/33kV S/S 132/33 kV T-3 LT Scheduled S/D Due to Work by Dasuria PBS at 33 kv bus-1	20.0MW load interrup.
08:20	10:21	Bogura 132/33kV S/S Transformer-3 LT Scheduled S/D Due to maintenance work	5.0MW load interrup.



Power Grid Bangladesh PLC
National Load Dispatch Center (NLDC)
System Summary Report

Date	Time	Event Description	Impact
08:20	10:20	Bogura 132/33kV S/S Transformer-3 HT Scheduled S/D Due to maintenance work	5.0MW load interrupt.
08:21	16:25	Fenchuganj-Sreemangal 132kV Ckt-1 Scheduled S/D from Sreemongol 132/33kV end Due to For maintenance work at Fenchuganj SS. and from Fenchuganj 230/132/33kV end Due to For deadline checking.	
08:27	16:29	Gopalganj 400/132kV S/S 400kV Rampal Ckt-2 Scheduled S/D Due to Annual Maintenance	
08:43		Natore-Rajshahi 132kV Ckt-2 Scheduled S/D from Natore 132/33kV end Due to Shutdown taken from rajshahi 132/33 kV Grid. and from Rajshahi 132/33kV end Due to Project work	
08:48		Sirajgonj 225MW CCPP Unit-1, FGMO is OFF with remarks:-	
08:50	10:56	Haripur 230/132kV S/S Ullon (Maniknagar-2) Tripped showing MicrohmP441 relays.	
09:09		Rajshahi 132/33kV S/S Transformer T-2(415T) LT Scheduled S/D Due to Project work	
09:10		Rajshahi 132/33kV S/S Transformer T-2(415T) HT Scheduled S/D Due to Project work	
09:28	16:28	Gopalganj(N)-Rampal Ckt-2 Scheduled S/D from Rampal 400/230kV end Due to Yearly Maintenance By Khulna ALDC	
09:28		Feni 132/33kV S/S T-1(405T) HT is restored.	
09:28		Feni 132/33kV S/S T-1(405T) LT is restored.	
09:58	15:43	Madunaghat 400/230kV S/S Madunaghat-Shikalbaha 230kV Ckt-1 Scheduled S/D Due to Annual Maintenance.	
10:27	15:24	Gopalganj(N)-Madaripur 132kV Ckt-3 Scheduled S/D from Gopalganj 400/132kV end Due to Annual Maintenance	
10:30	15:24	Gopalganj 400/132kV S/S 132kV Madaripur Ckt-4 Scheduled S/D Due to Annual Maintenance	
10:31	15:48	Taraganj 132/33kV S/S Taraganj-Rangpur CKT-01 Project Work S/D Due to Due to ALDC information.	
10:57		DSEPL(Pabna 100 MW Solar)-Joynagar 132 KV Ckt 1 Sync	
10:59		DSEPL(Pabna 100 MW Solar)-Joynagar 132 KV Ckt -2 Sync	
12:37		Rampura 230/132kV S/S 230kV Busbar-1 is restored.	
12:48		Baghabari-Roppur 230kV Ckt-2 is restored.	
14:38		Kamrangirchar-Keraniganj 132kV Ckt is restored.	
14:51	17:11	Rampura 230/132kV S/S 230kV Busbar-2 Scheduled S/D Due to Annual maintenance.	
15:20	19:49	Fenchuganj-Fenchuganj 132 kV Ckt-1 Scheduled S/D from Fenchuganj 230/132/33kV end Due to Fenchuganj 90MW power station end work.	
15:20	20:39	Fenchuganj-Fenchuganj 132 kV Ckt-2 Scheduled S/D from Fenchuganj 230/132/33kV end Due to Fenchuganj 90MW power station end work.	
15:28		Baghabari-Roppur 230kV Ckt-1 is restored.	
16:49		Lalmonirhat-Rangpur 132 kV Ckt-2 is restored.	
17:44		Khulna (C) S/S Tr-3 405T HT is restored.	
17:45		Khulna (C) S/S Tr-3 405T LT is restored.	
17:55		Madunaghat-Meghnaghat 400kV Ckt-1 is restored.	
21:31		Fenchuganj-Fenchuganj 132 kV Ckt-4 is restored.	
21:32		Sylhet 132/33kV S/S Sylhet-90MW P/S is restored.	
23:27		Maniknagar 132/33kV S/S Transformer GT-2 HT Scheduled S/D Due to DPDC 33 KV GIS SS Testing and commissioning work by DPDC PDS Project.	
05:00		Minimum Generation: 7419 MW.	
05:45	06:20	Bakerganj 132/33kV S/S T1 LT Tripped showing Over voltage relay relays Due to Over Voltage	
05:45	06:20	Bakerganj 132/33kV S/S T1 HT Tripped showing Over Voltage Relay relays Due to Over Voltage	
06:21		Baghabari-Roppur 230kV Ckt-1 Project Work S/D from Baghabari 230/132kV end Due to Temporary cradle	
06:22		Baghabari-Roppur 230kV Ckt-2 Project Work S/D from Baghabari 230/132kV end Due to Temporary cradle	
06:32		Kalurghat 132/33kV S/S TRFO-01(506T) LT Tripped showing REF 615 relays.	14.0MW load interrupt.



Power Grid Bangladesh PLC
National Load Dispatch Center (NLDC)
System Summary Report

Date : 23-01-2026

06:35	Kalurghat 132/33kV S/S TRFO-01(506T) HT Tripped showing RET 650RET 670 relays.	14.0MW load interrup.
07:18	Keranigonj 230/132/33kV S/S 132 kV Lalbagh Ckt. 3 Scheduled S/D Due to Annual maintenance and deadline checking.	
07:36	Bakulia 132/33kV S/S T-3 (422T) LT Scheduled S/D Due to Annual Maintenance	10.0MW load interrup.
07:36	Bakulia 132/33kV S/S T-3 (422T) HT Scheduled S/D Due to Annual Maintenance	10.0MW load interrup.
07:41	Sylhet (South) S/S Sylhet (S)-Fenchugonj 132KV Ckt-2 Project Work S/D Due to opgw change work	
07:41	Sylhet (South) S/S Sylhet (S)-Fenchugonj 132KV Ckt-1 Project Work S/D Due to opgw change work.	
07:41	Fenchuganj -Sylhet 132kV Ckt-1 Scheduled S/D from Beanibazar 132/33kV end Due to OPGW project work	32.0MW load interrup. Beanibazar 132/33kV end
07:42	Fenchuganj-Sylhet (T at Bianibazar) 132kV Ckt-2 Scheduled S/D from Beanibazar 132/33kV end Due to OPGW project work and from Fenchuganj 230/132/33kV end Due to For OPGW upgradation work.	
07:46	Cumilla(N)-Cumilla(S) 132 kV Ckt-1 Scheduled S/D from Cumilla(S) 132/33kV end Due to Annual Maintenance	

Sub-Divisional Engineer
Network Operation Division

Executive Engineer
Network Operation Division

Superintendent Engineer
Network Operation Division