



Power Grid Bangladesh PLC
National Load Dispatch Center (NLDC)
System Summary Report

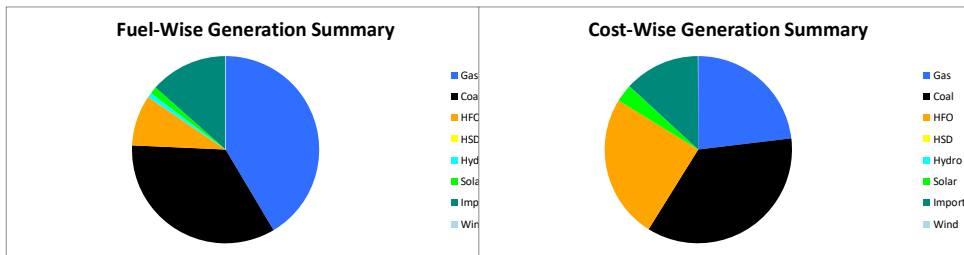
Date : 24-01-2026

Power Supply Scenario

Day Peak Generation	10272.22	MW	12:00 Hr.	Energy Generated	232.16641	MKWHr.
Day Peak Demand	10272.22	MW	12:00 Hr.	Energy Unserviced	0.99600	MKWHr.
Evening Peak Generation	11342.7	MW	20:00 Hr.	Energy Demand	233.16241	MKWHr.
Evening Peak Demand	11548.97	MW	19:30 Hr.	Maximum Temperature	26.30	°C
Minimum Generation of the Day	7419.38	MW	05:00 Hr.	Total Gas Supplied	709.62	MMCFD
Maximum Generation of the Day	11342.7	MW	20:00 Hr.	Production Cost per KWHR	6.27030	Tk.

Zone-wise Generation Summary (MKWHr.)

	Gas	Coal	HFO	HSD	Hydro	Solar	Import	Wind	Total
Dhaka Zone	24.90	0.00	7.33	0.00	0.00	0.01	0.00	0.00	32.24
Chattogram Zone	4.96	34.12	5.02	0.00	1.87	0.15	0.00	0.04	46.16
Cumilla Zone	20.26	0.00	2.06	0.00	0.00	0.40	2.63	0.00	25.35
Mymensingh Zone	1.20	0.00	1.50	0.00	0.00	0.24	0.00	0.00	2.94
Sylhet Zone	16.89	0.00	0.00	0.00	0.00	0.07	0.00	0.00	16.96
Khulna Zone	5.52	25.02	0.34	0.00	0.00	0.04	11.44	0.00	42.36
Barishal Zone	8.57	19.17	0.97	0.00	0.00	0.00	0.00	0.00	28.71
Rajshahi Zone	13.91	0.00	1.62	0.00	0.00	0.95	17.09	0.00	33.56
Rangpur Zone	0.00	1.30	1.53	0.00	0.00	1.05	0.00	0.00	3.88
Total	96.20	79.61	20.36	0.00	1.87	2.92	31.16	0.04	232.17



Production Cost (Tk.)

Fuel	Tk.	Fuel	Tk.
Gas	335593377.4	Hydro	186738
Coal	521484252.8	Solar	45252219.96
HFO	362411132.7	Import	190176004.8
HSD	0	Wind	649593.6
Total:	145,57,53,319		Tk.

E-W Interconnector & Import Scenario

Energy Flow from East to West:	KWHr:	0	Import through HVDC C/B Interconnector:	MKWHr:	11.44	Peak Hr Flow	473.00 MW at 20:00 hrs.
Energy Flow from West to East:	KWHr:	6996328.03	Import through Adani C/B Interconnector:	MKWHr:	17.087909	Peak Hr Flow	759.00 MW at 20:00 hrs.
during Peak Demand (W-E):	MW:	1667	Import through Cumilla C/B Interconnector:	MKWHr:	2.63328	Peak Hr Flow	126.00 MW at 20:00 hrs.
Maximum Power Flow (W-E):	MW:	2015	Total Import through C/B Interconnector:	MKWHr:	31.161189	Peak Hr Flow	358.00 MW at 20:00 hrs.

Zone-wise Load-shed and Demand Summary (MW) at evening peak Hour (20:00 Hr.)

Zone	Load-Shed	Demand
Dhaka	0	4092
Chattogram	0	1208
Cumilla	0	990
Mymensingh	31	966
Sylhet	0	405
Khulna	70	1267
Barishal	0	336
Rajshahi	40	1041
Rangpur	10	710
Total	151	11015

Status of unavailable Power Plant

Planned S/D			Forced S/D		
Sl	Plant Name	Capacity	Sl	Plant Name	Capacity
1	Baghabari 100 MW GTPP	100	1	Ashuganj 51 MW PP (Midland)	51
2	Barapukuria TPP Unit-2	85			
3	Siddhirgonj 210 MW TPP	115			
	Total	300		Total	51
Total Unavailable Capacity			351		

Event Summary

Outage Time	Restoration Time	Description of Event	Description of Event
08:02	16:37	Tongi 230/132/33kV S/S T-1 HT Tripped showing REF Opdr LV relays Due to Trip	24.0MW load interrupt.
08:14	18:24	Kabirpur 132/33kV S/S XFR, T-2 HT Scheduled S/D Due to 33 kV Bus Maintenance Work by DPBS-1	55.0MW load interrupt.
08:14	18:26	Kabirpur 132/33kV S/S XFR, T-2 LT Scheduled S/D Due to 33 kV Bus Maintenance Work by DPBS-1	55.0MW load interrupt.
08:15	14:48	Mongla 132/33kV S/S T-1 LT Scheduled S/D Due to Annual maintenances work	22.0MW load interrupt.



Power Grid Bangladesh PLC
National Load Dispatch Center (NLDC)
System Summary Report

Date : 24-01-2026

08:15	14:46	Mongla 132/33kV S/S T-1 HT Scheduled S/D Due to Annual maintenances work	22.0MW load interrupt.
08:15	14:48	Mongla 132/33kV S/S T-2 LT Scheduled S/D Due to Annual maintenances work	22.0MW load interrupt.
08:16	14:46	Mongla 132/33kV S/S T-2 HT Scheduled S/D Due to Annual maintenances work	22.0MW load interrupt.
08:16	16:33	Fenchuganj-Sreemangal 132kV Ckt-2 Scheduled S/D from Sreemongol 132/33kV end Due to Dead Line checking at Fenchuganj End. and from Fenchuganj 230/132/33kV end Due to Deadline Checking.	
08:17	18:24	Kabirpur 132/33kV S/S XFR, T-I HT Scheduled S/D Due to 33 kV Bus Maintenance Work by DPBS-1	55.0MW load interrupt.
08:17	18:25	Kabirpur 132/33kV S/S XFR, T-I LT Scheduled S/D Due to 33 kV Bus Maintenance Work by DPBS-1	55.0MW load interrupt.
08:17	10:36	Natore-Rajshahi 132kV Ckt-2 Scheduled S/D from Natore 132/33kV end.	
08:24	17:30	Ashuganj-Bhulta 400 kV Ckt-2 Scheduled S/D from Bhulta 400/230kV end Due to Annual maintenance work	
08:24	14:42	Mongla 132/33kV S/S 100MW ERL Solar PS Scheduled S/D Due to Annual maintenances work	
08:24	14:40	Bagerhat-Mongla 132 kV Ckt-1 Scheduled S/D from Mongla 132/33kV end Due to Annual maintenances work	
08:25	14:40	Mongla 132/33kV S/S Main Bus Scheduled S/D Due to Annual maintenances work	22.0MW load interrupt.
08:27	08:31	Kalurghat 132/33kV S/S TRFO-02(516T) HT Forced S/D	14.0MW load interrupt.
08:28	14:53	Chandraghona 132/33kV S/S MAIN BUS-1 Scheduled S/D Due to Annual maintenance	
08:29	14:14	Agargaon 230/132kV S/S 132kV Transformer-2 (415T2) LT Scheduled S/D Due to Annual Maintenance	
08:30	14:09	Agargaon 230/132kV S/S 132kV Transformer-2 (415T2) HT Scheduled S/D Due to Annual Maintenance	
08:33	14:35	Bagerhat 132/33kV S/S 132 kV BUS Scheduled S/D Due to 132KV Bus Shutdown for annual maintenance	53.0MW load interrupt.
08:36	14:33	Bagerhat-Goalpara 132 kV Ckt-1 Scheduled S/D from Goalpara 132/33kV end Due to For annual Maintenance work	
08:46	20:41	BIPTC S/S Baharampur-3 Scheduled S/D Due to Annual maintenance	
08:49	15:28	Purbasaidpur-Saidpur 132kV Ckt-2 Scheduled S/D from Saidpur 132/33kV end Due to Annual Maintenance	
08:50	17:02	Rampal 400/230kV S/S Gopalganj Line-2 Reactor Scheduled S/D Due to Maintenance work at Khulna-ALDC.	
08:53	17:00	Gopalganj 400/132kV S/S 400kV Rampal Ckt-2 Scheduled S/D	
08:53	17:01	Gopalganj(N)-Rampal Ckt-2 Scheduled S/D from Rampal 400/230kV end Due to Maintenance work at Khulna-ALDC.	
08:58	17:26	KSRM 132/33kV S/S Transformer-01 HT Scheduled S/D Due to for DS Removal and LA Modification work on the 33KV KBIL Phase-02 Feeder	
09:01	15:25	Cumilla(N)-Daudkandi 132 kV Ckt-1 Scheduled S/D from Daudkandi 132/33kV end Due to Annual Maintenance work.	
09:02	15:25	Muradnagar 132/33kV S/S 132 KV Muradnagar- Daudkandi Ckt-01 Scheduled S/D	
09:03	17:37	Kaliakoir 400/230/132kV S/S 400/132kV TR1 LT Scheduled S/D Due to Annual maintenance.	
09:03	17:37	Kaliakoir 400/230/132kV S/S 400/132kV TR1 HT Scheduled S/D Due to annual maintenance	
09:11	15:54	Faridpur-Gopalganj(N) 132 kV Ckt-1 Scheduled S/D from Faridpur 132/33kV end Due to Annual maintenance and from Gopalganj 400/132kV end.	
09:12	17:03	Mymensingh RPCL-Tangail 132kV Ckt-1 Scheduled S/D from Muktagacha 132/33kV end Due to Piling Work of RHD	
09:13	15:55	Faridpur-Gopalganj(N) 132 kV Ckt-2 Scheduled S/D from Gopalganj 400/132kV end. and from Faridpur 132/33kV end Due to Annual maintenance	
09:19	14:21	Barishal 132/33kV S/S T-2 (415T) LT Scheduled S/D Due to Wzpdcl annual maintenance work at 33kV bus	10.0MW load interrupt.
09:20	14:20	Barishal 132/33kV S/S T-2 (415T) HT Scheduled S/D Due to Wzpdcl annual maintenance work	10.0MW load interrupt.



Power Grid Bangladesh PLC
National Load Dispatch Center (NLDC)
System Summary Report

Date :	24-01-2026		
09:27	13:59	Jaldhaka 132/33kV S/S 416T-2 LT Scheduled S/D Due to annual maintenance of 33 KV Bus section -02 & Bus section -03 related 33 KV Feeder of NESCO & PBS.	20.0MW load interrupt.
09:28	13:58	Jaldhaka 132/33kV S/S 416T-2 HT Scheduled S/D Due to annual maintenance of 33 KV Bus section -02 & Bus section -03 related 33 KV Feeder of NESCO & PBS	20.0MW load interrupt.
09:34	16:42	Khulna (C) S/S North-WestCkt-1 Scheduled S/D Due to S/D by ALDC	
09:47		BSRM 230/33kV S/S 230/33 kv Transformer-3 (125/140 MVA) HT Scheduled S/D Due to Annual Maintenance	
09:55	14:59	Chauddagram 132/33kV S/S 132 kv T-1 HT Scheduled S/D Due to Maintenance work	
09:55	14:58	Chauddagram 132/33kV S/S 132 kv T-1 LT Scheduled S/D Due to Maintenance work	
09:57		Chapai 132/33kV S/S T-3 (425T) HT Scheduled S/D Due to T3 -132 kv CB change	
09:57	15:01	Madunaghat 400/230kV S/S Madunaghat-Hathazari 230kV Ckt.-1 Scheduled S/D	
	10:04	Fenchuganj -Sylhet 132kV Ckt-1 is restored.	
	10:08	Fenchuganj-Sylhet (T at Bianbazar) 132kV Ckt-2 is restored.	
10:08	15:02	Hathazari-Madunaghat 132kV Ckt-1 Scheduled S/D from Hathazari 230/132/33kV end Due to Annual dead line Check	
10:19	18:38	Kabirpur -Tongi 132kV Ckt-1 Scheduled S/D from Tongi 230/132/33kV end. and from Kabirpur 132/33kV end Due to Annual Maintenance (Deadline Checking)	
10:21	17:06	Monakasha-Rahanpur 400kV Ckt-1 Scheduled S/D from Rahanpur 400/132kV end Due to Annual maintenance	
10:42		Bhola Nutan Biddut BD LTD record a general event:- NBBL GIS Outgoing Bus-2 CB(DTCB-2) Opeened	
10:52	20:32	Lakshmpur 132/33kV S/S Transformer-2 LT Scheduled S/D Due to Shutdown taken for change the rusted 33kv Circuit breaker.	
10:55		Bhola Nutan Biddut BD LTD record a general event:- NBBL GIS Outgoing Bus-2 CB (DTCB-2) Before And After DS Opened	
10:58	20:29	Lakshmpur 132/33kV S/S Transformer-2 HT Scheduled S/D Due to Shutdown taken for change the 33kv circuit breaker.	
11:00		Bhola Nutan Biddut BD LTD record a general event:- NBBL GIS Outgoing Bus-2 CB (DTCB-2) Before And After Earth Switch Applied.	
	11:40	Sylhet (South) S/S Sylhet (S)-Fenchuganj 132KV Ckt-2 is restored.	
	11:41	Baghabari-Roppur 230kV Ckt-2 is restored.	
12:00		Day Peak Generation: 10268 MW.	
12:02	19:20	Sylhet-Sylhet (South) 132KV Ckt-2 Scheduled S/D from Sylhet 132/33kV end Due to OPGW Replacement work by OFCN.	
	12:04	Baghabari-Roppur 230kV Ckt-1 is restored.	
13:33		Sirajgonj 225MW CCPP Unit-1, FGMO is ON with remarks:- From 06:25 AM.	
13:45	14:04	Taraganj 132/33kV S/S Taraganj-Rangpur CKT-01 Project Work S/D Due to ordered by ALDC Bogura	
14:17	17:25	Kaliakoir 400/230/132kV S/S 132kV Bus 2 Scheduled S/D Due to Annual Maintenance.	
	14:22	Bakulia 132/33kV S/S T-3 (422T) HT is restored.	
	14:23	Bakulia 132/33kV S/S T-3 (422T) LT is restored.	
14:33	17:38	Barishal 132/33kV S/S T-1 (405T) LT Scheduled S/D Due to Maintenance work by WZPDCL.	24.0MW load interrupt.
14:34	17:37	Barishal 132/33kV S/S T-1 (405T) HT Scheduled S/D Due to Maintenance work by WZPDCL.	24.0MW load interrupt.
	14:34	Keranigonj 230/132/33kV S/S 132 kV Lalbagh Ckt. 3 is restored.	
14:50	15:24	Madunaghat-Meghnaghat 400kV Ckt-2 Tripped from Meghnaghat 400/230kV end showing Relay 86.1, Relay 86.2 relays Due to 400 kV Madunaghat ckt-02 Tripped.	
	15:03	Kushtia 132/33kV S/S T2 HT is restored.	
	15:04	Kushtia 132/33kV S/S T2 LT is restored.	
	15:07	Jhenaidah-Kushtia 132kV Ckt-1 is restored.	
	15:08	Jhenaidah 132/33kV S/S Jhenaidah-Kushtia 132kV Circuit-1(L1) is restored.	
	15:15	Mirpur-Uttara 132kV Ckt-1 is restored.	



Power Grid Bangladesh PLC
National Load Dispatch Center (NLDC)
System Summary Report

Date : 24-01-2026

15:26	15:42	Halishahar-Julda 132kV Ckt-1 Tripped from Juldah 132/33kV end showing Distance relay fault 1.00 Km. Over Current Flow. relays.
	15:35	Aminbazar-Mirpur 132kV Ckt-2 is restored.
	15:59	Bagerhat-Mongla 132 kV Ckt-2 is restored.
16:33	17:34	Mirpur-Uttara 132kV Ckt-1 Project Work S/D from Mirpur 132/33kV end Due to CT Connection Check
17:20	19:44	Tongi 230/132/33kV S/S T-2 LT Scheduled S/D Due to Testing work
17:21	19:42	Tongi 230/132/33kV S/S T-2 HT Scheduled S/D Due to Testing work
19:51	20:47	Tongi 230/132/33kV S/S T-3 LT Scheduled S/D Due to Transformer Testing Work.
19:51	20:47	Tongi 230/132/33kV S/S T-3 HT Scheduled S/D Due to Transformer Testing Work
20:00		Evening peak generation 11342 MW
05:00		Minimum Generation: 8008 MW
07:28		Madartek-Rampura 132kV Ckt-1 Scheduled S/D from Rampura 230/132kV end Due to Annual Maintenance
07:44		Fenchuganj-Sreemangal 132kV Ckt-2 Forced S/D from Sreemongol 132/33kV end Due to Order by Back Up NLDC. and from Fenchuganj 230/132/33kV end Due to Deadline Checking

Sub-Divisional Engineer
Network Operation Division

Executive Engineer
Network Operation Division

Superintendent Engineer
Network Operation Division