



**Power Grid Bangladesh PLC**  
**National Load Dispatch Center (NLDC)**  
**System Summary Report**

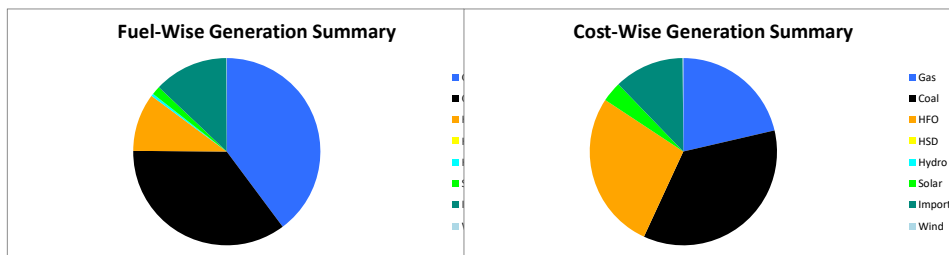
Date : 25-01-2026

**Power Supply Scenario**

Day Peak Generation	10679.94	MW	12:00 Hr.	Energy Generated	241.16614	MKWHr.
Day Peak Demand	11203.94	MW	12:00 Hr.	Energy Unserviced	6.19000	MKWHr.
Evening Peak Generation	11186.91	MW	19:00 Hr.	Energy Demand	247.35614	MKWHr.
Evening Peak Demand	11699.91	MW	19:00 Hr.	Maximum Temperature	28.30	°C
Minimum Generation of the Day	8008.5	MW	05:00 Hr.	Total Gas Supplied	721.80	MMCFD
Maximum Generation of the Day	11186.91	MW	19:00 Hr.	Production Cost per KWHr	6.51699	Tk.

**Zone-wise Generation Summary (MKWHr.)**

	Gas	Coal	HFO	HSD	Hydro	Solar	Import	Wind	Total
Dhaka Zone	24.69	0.00	8.04	0.00	0.00	0.16	0.00	0.00	32.88
Chattogram Zone	4.91	37.74	6.18	0.00	1.10	0.14	0.00	0.11	50.19
Cumilla Zone	20.03	0.00	3.47	0.00	0.00	0.37	2.74	0.00	26.61
Mymensingh Zone	0.66	0.00	1.68	0.00	0.00	0.28	0.00	0.00	2.62
Sylhet Zone	18.54	0.00	0.00	0.00	0.00	0.06	0.00	0.00	18.60
Khulna Zone	4.92	25.33	0.24	0.00	0.00	0.44	11.46	0.00	42.38
Barishal Zone	8.62	20.90	1.05	0.00	0.00	0.00	0.00	0.00	30.57
Rajshahi Zone	13.57	0.00	1.76	0.00	0.00	1.08	16.92	0.00	33.33
Rangpur Zone	0.00	1.29	1.71	0.00	0.00	0.97	0.00	0.00	3.98
<b>Total</b>	<b>95.94</b>	<b>85.26</b>	<b>24.13</b>	<b>0.00</b>	<b>1.10</b>	<b>3.51</b>	<b>31.11</b>	<b>0.11</b>	<b>241.17</b>



**Production Cost (Tk.)**

Fuel	Tk.	Fuel	Tk.
Gas	335953557.8	Hydro	110364
Coal	558220233.4	Solar	55315954.88
HFO	430368670.5	Import	190028783.5
HSD	0	Wind	1680470.4
<b>Total:</b>	<b>157,16,78,034</b>	<b>Total:</b>	<b>Tk.</b>

**E-W Interconnector & Import Scenario**

Energy Flow from East to West:	KWHr:	0	Import through HVDC C/B Interconnector:	MKWHr:	11.455272	Peak Hr Flow	474.00 MW at 19:00 hrs.
Energy Flow from West to East:	KWHr:	35047725.84	Import through Adani C/B Interconnector:	MKWHr:	16.919364	Peak Hr Flow	760.91 MW at 19:00 hrs.
Flow during Peak Demand (W-E):	MW:	1643	Import through Cumilla C/B Interconnector:	MKWHr:	2.73504	Peak Hr Flow	138.00 MW at 19:00 hrs.
Maximum Power Flow (W-E):	MW:	1902	Total Import through C/B Interconnector:	MKWHr:	31.109676	Peak Hr Flow	1372.91 MW at 19:00 hrs.

**Zone-wise Load-shed and Demand Summary (MW) at evening peak Hour (19:00 Hr.)**

Zone	Load-Shed	Demand
Dhaka	110	4295
Chattogram	0	1217
Cumilla	10	982
Mymensingh	45	972
Sylhet	0	423
Khulna	160	1286
Barishal	0	324
Rajshahi	95	1076
Rangpur	71	713
<b>Total</b>	<b>491</b>	<b>11288</b>

**Status of unavailable Power Plant**

Planned S/D			Forced S/D		
Sl	Plant Name	Capacity	Sl	Plant Name	Capacity
1	Baghabari 100 MW GTPP	100			
2	Barapukuria TPP Unit-2	85			
3	Siddhirgonj 210 MW TPP	115			
Total		300	Total		0
<b>Total Unavailable Capacity</b>			<b>300</b>		

**Event Summary**

Outage Time	Restoration Time	Description of Event	Description of Event
08:21	15:27	BIPTC S/S Baharampur-3 Scheduled S/D Due to Annual Maintenance	
08:21	17:28	Sylhet-Sylhet (South) 132KV Ckt-2 Project Work S/D from Sylhet 132/33kV end Due to SD Request by SDE Mojaffor , OFCEN, Due to OPGW Replace.	
08:22	14:56	Bakulia-MSML 132 kV Ckt-2 Scheduled S/D from Bakulia 132/33kV end Due to Annual Maintenance	
08:28	16:33	Ashuganj-Bhulta 400 kV Ckt-2 Scheduled S/D from Bhulta 400/230kV end.	
08:34	17:03	Gopalganj 400/132kV S/S 400kV Rampal Ckt-2 Scheduled S/D	



**Power Grid Bangladesh PLC  
National Load Dispatch Center (NLDC)  
System Summary Report**

	Date :		
08:35	17:03	Gopalganj(N)-Rampal Ckt-2 Scheduled S/D from Rampal 400/230kV end Due to NLDC requirement.	
08:36	16:31	Monakasha-Rahanpur 400kV Ckt-1 Scheduled S/D from Rahanpur 400/132kV end.	
08:39	16:45	Purbasadipur-Saidpur 132kV Ckt-2 Scheduled S/D from Saidpur 132/33kV end Due to Annual Maintenance	
08:42	13:46	Chandraghona 132/33kV S/S MAIN BUS-2 Scheduled S/D Due to Annual maintenance	
08:50	17:13	Aminbazar-Meghnaghat 400kV Ckt-2 Scheduled S/D from Meghnaghat 400/230kV end Due to 400 kV Aminbazar ckt- 02 shutdown instructed by NLDC. Munshiganj SS will do their annual maintenance work.	
08:55	17:44	Korerhat 400/230/132kV S/S Chowmuhani-04 Project Work S/D Due to SAS witness	
08:57	17:20	Faridpur-Gopalganj(N) 132 kV Ckt-1 Scheduled S/D from Gopalganj 400/132kV end. and from Faridpur 132/33kV end Due to Annual Maintenance	
08:57	12:25	Barapukuria-Rangpur 132 kV Ckt-1 Project Work S/D from Barapukuria 230/132/33kV end Due to Project work G to G	
08:58	12:27	Barapukuria-Rangpur 132 kV Ckt-2 Project Work S/D from Barapukuria 230/132/33kV end Due to Project work G to G	
08:58	17:21	Faridpur-Gopalganj(N) 132 kV Ckt-2 Scheduled S/D from Gopalganj 400/132kV end. and from Faridpur 132/33kV end Due to Annual Maintenance	
09:02	18:36	Kabirpur -Tongi 132kV Ckt-1 Scheduled S/D from Kabirpur 132/33kV end Due to Annual Maintenance. and from Tongi 230/132/33kV end Due to Shutdown taken by Kabirpur	
09:04	17:24	Korerhat 400/230/132kV S/S ATR-4(7403T) LT Project Work S/D Due to SAS witness	
09:04	17:23	Korerhat 400/230/132kV S/S ATR-4(7403T) HT Project Work S/D Due to SAS witness	
09:11	17:19	Korerhat 400/230/132kV S/S 230kV BUS-A1 Project Work S/D Due to SAS witness	
09:15		Mymensingh RPCL-Tangail 132kV Ckt-1 Scheduled S/D from Muktagacha 132/33kV end.	
09:22	12:58	Khulna (C) S/S North- West Ckt-2 Scheduled S/D Due to NW circuit shutdown taken By NW substation side.	
09:29	17:07	Madunaghat 400/230kV S/S Madunaghat-Hathazari 230kV Ckt.-1 Scheduled S/D	
09:31	12:05	Barapukuria 230/132/33kV S/S 230/132 KV T-01, 703T HT Forced S/D Due to Maintenance	
09:32	12:06	Barapukuria 230/132/33kV S/S 230/132 KV T-01, 703T LT Forced S/D Due to Maintenance	
09:51		Madanganj 132/33kV S/S GT-2 LT Scheduled S/D	
10:04		Madanganj 132/33kV S/S GT-2 HT Scheduled S/D	
10:05	11:40	Bheramara(GK) 132/33kV S/S TR-3 LT Scheduled S/D Due to 33kV Thakur Doulatpur Raiser Maintenance due to Occured fire	
10:06	11:39	Bheramara(GK) 132/33kV S/S TR-3 HT Scheduled S/D Due to 33kV Thakur Doulatpur Raiser Maintenance due to Occured fire	
10:10		Mirpur 132/33kV S/S RPC Unit-3 Scheduled S/D Due to Annual Maintenance work	
10:31	16:41	Siddhirganj 132/33kV S/S 120MW EGCB GT2 Forced S/D Due to Insulation check EGCB ends	
11:14	13:42	Bhaluka 132/33kV S/S Sreepur Ckt- 02 Scheduled S/D Due to Annual maintenance work.	45.0MW load interrupt.
11:21	13:40	Sreepur 230/132/33kV S/S Sreepur-Valuka Ckt-2 Forced S/D Due to Annual Maintenance	
11:35	13:13	Bhaluka 132/33kV S/S Bus A Scheduled S/D	
12:00		Day peak generation: 10675 MW	
12:03	13:44	Bhaluka-Mymensingh 132 kV Ckt-2 Forced S/D from Bhaluka 132/33kV end Due to Load management by NLDC	
12:28		Kaliakoir 400/230/132kV S/S 132kV Bus 2 Scheduled S/D Due to Annual Maintenance.	
12:54		Kabirpur-Kaliakoir 132kV Ckt-1 Scheduled S/D from Kaliakoir 400/230/132kV end Due to Annual Maintenance.	
13:18	21:10	Goalpara 132/33kV S/S Goalpara-NWPGCL Forced S/D Due to Emergency Command by ALDC Khulna	
	15:32	Khulna(S) 230/132kV S/S TR-2 HT is restored.	
	15:43	Khulna(S) 230/132kV S/S TR-2 LT is restored.	
	15:49	Fenchuganj-Sreemangal 132kV Ckt-2 is restored.	
	15:51	Muradnagar 132/33kV S/S 132KV Transformer-02 HT is restored.	



**Power Grid Bangladesh PLC  
National Load Dispatch Center (NLDC)  
System Summary Report**

<b>Date :</b>	25-01-2026	
15:52	Muradnagar 132/33kV S/S 132KV Transformar-02 LT is restored.	
16:03	19:23 Muradnagar 132/33kV S/S 132KV Transformar-01 LT Project Work S/D Due to PBS work	
16:04	19:22 Muradnagar 132/33kV S/S 132KV Transformar-01 HT Project Work S/D Due to PBS work	
	17:40 Madartek-Rampura 132kV Ckt-1 is restored.	
19:00	Evening Peak Generation: 11186 MW.	
19:53	21:17 Muradnagar 132/33kV S/S 132KV Transformar-02 LT Project Work S/D Due to PBS Work	
19:54	21:17 Muradnagar 132/33kV S/S 132KV Transformar-02 HT Project Work S/D Due to PBS Work	
05:00	Minimum generation 7984 MW	
07:07	Fenchuganj -Sylhet 132kV Ckt-1 Scheduled S/D from Beanibazar 132/33kV end Due to OPGW project work	32.0MW load interrup. Beanibazar 132/33kV end
07:12	Fenchuganj-Sylhet (T at Bianibazar) 132kV Ckt-2 Scheduled S/D from Beanibazar 132/33kV end Due to OPGW project work and from Fenchuganj 230/132/33kV end Due to Sylhet south SS end loop connection between two ckt by OFCN	
07:12	Sylhet (South) S/S Sylhet (S)-Fenchugonj 132KV Ckt-2 Scheduled S/D Due to OFCN works	
07:14	Maniknagar-Siddhirganj 230kV Ckt-1 Scheduled S/D from Maniknagar 230/132kV end Due to Dead line checking, and from Siddhirganj 230/132kV end Due to Annual maintenance work	
08:00	Agrabad 132/33kV S/S MTR-02 (416T) HT Scheduled S/D Due to Annual Maintenance	
08:00	Agrabad 132/33kV S/S MTR-02 (416T) LT Scheduled S/D Due to Annual Maintenance	

**Sub-Divisional Engineer**  
Network Operation Division

**Executive Engineer**  
Network Operation Division

**Superintendent Engineer**  
Network Operation Division