



Power Grid Bangladesh PLC  
National Load Dispatch Center (NLDC)  
System Summary Report

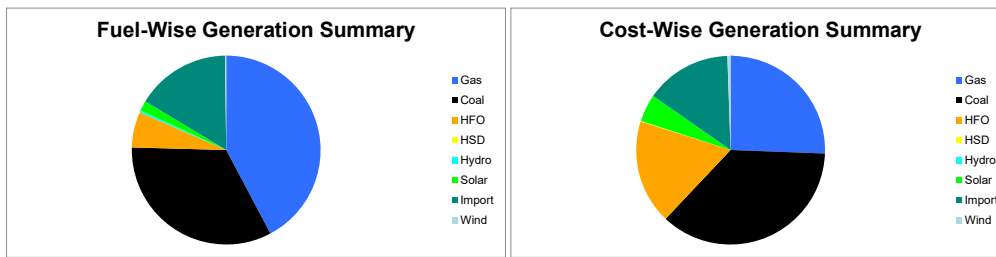
Date : 06-02-2020

Power Supply Scenario

Day Peak Generation	11425.06	MW	12.00 Hr.	Energy Generated	250.66713	MKWHr.
Day Peak Demand	11425.06	MW	12.00 Hr.	Energy Unserviced	0.00000	MKWHr.
Evening Peak Generation	12017.85	MW	19.00 Hr.	Energy Demand	250.66713	MKWHr.
Evening Peak Demand	12017.85	MW	19.00 Hr.	Maximum Temperature	27.00	°C
Minimum Generation of the Day	7997	MW	05.00 Hr.	Total Gas Supplied	785.48	MMCFD
Maximum Generation of the Day	12017.85	MW	19.00 Hr.	Production Cost per KWHR	5.84213	Tk.

Zone-wise Generation Summary (MKWHr.)

	Gas	Coal	HFO	HSD	Hydro	Solar	Import	Wind	Total
Dhaka Zone	29.04	0.00	5.69	0.00	0.00	0.21	0.00	0.00	34.93
Chattogram Zone	2.35	41.69	3.07	0.00	0.83	0.16	0.00	0.55	48.66
Cumilla Zone	22.90	0.00	2.01	0.00	0.00	0.46	2.82	0.00	28.18
Mymensingh Zone	2.05	0.00	1.49	0.00	0.00	0.27	0.00	0.00	3.82
Sylhet Zone	18.55	0.00	0.00	0.00	0.00	0.06	0.00	0.00	18.61
Khulna Zone	9.09	13.05	0.17	0.00	0.00	0.57	21.70	0.00	44.59
Barishal Zone	8.58	28.50	0.50	0.00	0.00	0.00	0.00	0.00	37.58
Rajshahi Zone	13.29	0.00	1.23	0.00	0.00	1.40	15.97	0.00	31.89
Rangpur Zone	0.00	0.00	1.16	0.07	0.00	1.19	0.00	0.00	2.42
<b>Total</b>	<b>105.85</b>	<b>83.24</b>	<b>15.31</b>	<b>0.07</b>	<b>0.83</b>	<b>4.32</b>	<b>40.49</b>	<b>0.55</b>	<b>250.67</b>



Production Cost (Tk.)

Fuel	Tk.	Fuel	Tk.
Gas	374679622.7	Hydro	83200
Coal	533919563.5	Solar	68683793.01
HFO	261063476.4	Import	215944965.8
HSD	1984405.5	Wind	8070494.4
<b>Total:</b>	<b>146,44,29,521</b>		<b>Tk.</b>

E-W Interconnector & Import Scenario

Energy Flow from East to West:	KWHr:	0	Import through HVDC C/B Interconnector:	MKWHr:	21.702545	Peak Hr Flow	898.00 MW at 19:00 hrs.
Energy Flow from West to East:	KWHr:	2964074.04	Import through Adani C/B Interconnector:	MKWHr:	15.966909	Peak Hr Flow	746.55 MW at 19:00 hrs.
Flow during Peak Demand (W-E):	MW:	1581	Import through Cumilla C/B Interconnector:	MKWHr:	2.81664	Peak Hr Flow	124.00 MW at 19:00 hrs.
Maximum Power Flow (W-E):	MW:	2218	Total Import through C/B Interconnector:	MKWHr:	40.486094	Peak Hr Flow	1768.55 MW at 19:00 hrs.

Zone-wise Load-shed and Demand Summary (MW) at evening peak Hour (19:00 Hr.)

Zone	Load-Shed	Demand
Dhaka	0	4313
Chattogram	0	1240
Cumilla	0	984
Mymensingh	0	1039
Sylhet	0	425
Khulna	0	1282
Barishal	0	314
Rajshahi	0	1130
Rangpur	0	804
<b>Total</b>	<b>0</b>	<b>11531</b>

Status of unavailable Power Plant

Planned S/D			Forced S/D		
Sl	Plant Name	Capacity	Sl	Plant Name	Capacity
1	Baghabani 100 MW GTTP	100			
2	Barapukuria TPP Unit-2	85			
3	Siddhirganj 210 MW TPP	115			
<b>Total</b>		<b>300</b>	<b>Total</b>		<b>0</b>
<b>Total Unavailable Capacity</b>			<b>300</b>		

Event Summary

Outage Time	Restoration Time	Description of Event	Description of Event
09:47	13:27	Rampur 230/132/33 S/S Anandabazar-1 Forced S/D Due to The underground cable portion was energized only while the loop was open at the monopole. This time to close the loop.	
10:50	12:35	Kabirpur - Manikganj 132kV Ckt-1 Scheduled S/D from Manikganj 132/33kV end Due to For kite Cotton remove .	
11:25	11:42	Faridpur-Gopalganj(N) 132 kV Ckt-2 Tripped from Faridpur 132/33kV end showing Micom p442 relays.	
11:40	13:36	Pabna- Shahjadpur 132kV Ckt-1 Tripped from Pabna 132/33kV end showing GEN Trip, Z-2 Trip relays Due to L-L-G Trip	



Power Grid Bangladesh PLC  
National Load Dispatch Center (NLDC)  
System Summary Report

<b>Date :</b>	06-UZ-ZUZo		
11:50	13:46	Pabna- Shahjadpur 132kV Ckt-1 Forced S/D from Shahjadpur 132/33kV end Due to Fault remove.	
12:00		Day Peak Generation: 11421 MW.	
12:56	14:39	Bakulia-Sikalbaha 132 kV Ckt-1 Forced S/D from Bakulia 132/33kV end. and from Shikalbaha 230/132kVend.	
13:16	16:09	Shariatpur 132/33kV S/S T1-406T LT Tripped showing REC650 relays Due to Oil Surge Relay fault.	
13:16	16:08	Shariatpur 132/33kV S/S T1-406T HT Tripped showing REC650 relays Due to Oil Surge Relay fault.	
13:27	16:33	Kabirpur - Manikganj 132kV Ckt-2 Scheduled S/D from Manikganj 132/33kV end Due to For Kite cotton remove.	
06:12		Ashuganj 450 MW CCPP(South) Shutdown with remarks:- ST	
06:18		Ashuganj 450 MW CCPP(South) Synchronized with remarks:- GT (False SMS)	
06:18		Ashuganj 450 MW CCPP(South) Synchronized with remarks:- GT	
06:18		Ashuganj 450 MW CCPP(South) Synchronized with remarks:- GT (False Message)	
06:54		Niamatpur 132/33kV S/S Transformer-1(407T) HT Forced S/D Due to Pbs t1 bus maintenance	25.0MW load interrup.
06:55		Niamatpur 132/33kV S/S Transformer-1(407T) LT Forced S/D Due to Pbs t1 bus maintenance	25.0MW load interrup.
07:02		Ashuganj CCPP 225 MW Synchronized with remarks:- ST	

Sub-Divisional Engineer  
Network Operation Division

Executive Engineer  
Network Operation Division

Superintendent Engineer  
Network Operation Division