



**Power Grid Bangladesh PLC**  
**National Load Dispatch Center (NLDC)**  
**System Summary Report**

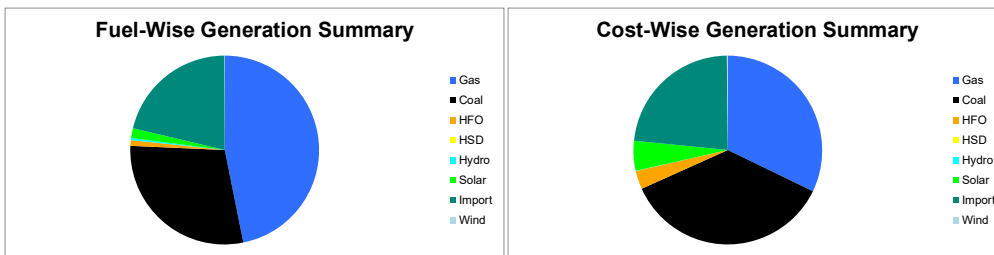
Date : 10-02-2020

**Power Supply Scenario**

Day Peak Generation	10584.07	MW	12:00 Hr.	Energy Generated	235.55011	MKWHr.
Day Peak Demand	10584.07	MW	12:00 Hr.	Energy Unserviced	0.00000	MKWHr.
Evening Peak Generation	10766.23	MW	19:00 Hr.	Energy Demand	235.55011	MKWHr.
Evening Peak Demand	10766.23	MW	19:00 Hr.	Maximum Temperature	28.50	°C
Minimum Generation of the Day	7869.37	MW	05:00 Hr.	Total Gas Supplied	794.06	MMCFD
Maximum Generation of the Day	11050.17	MW	13:00 Hr.	Production Cost per KWHr	5.07269	Tk.

**Zone-wise Generation Summary (MKWHr.)**

	Gas	Coal	HFO	HSD	Hydro	Solar	Import	Wind	Total
Dhaka Zone	27.55	0.00	0.58	0.00	0.00	0.18	0.00	0.00	28.31
Chattogram Zone	6.32	38.72	0.13	0.00	0.97	0.16	0.00	0.13	46.42
Cumilla Zone	23.01	0.00	0.20	0.00	0.00	0.42	2.63	0.00	26.26
Mymensingh Zone	3.05	0.00	1.17	0.00	0.00	0.24	0.00	0.00	4.46
Sylhet Zone	22.73	0.00	0.00	0.00	0.00	0.06	0.00	0.00	22.80
Khulna Zone	6.39	3.39	0.00	0.00	0.00	0.55	21.78	0.00	32.11
Barishal Zone	8.15	24.73	0.00	0.00	0.00	0.00	0.00	0.00	32.89
Rajshahi Zone	13.07	0.00	0.00	0.00	0.00	1.21	25.58	0.00	39.86
Rangpur Zone	0.00	1.25	0.15	0.00	0.00	1.04	0.00	0.00	2.44
<b>Total</b>	<b>110.28</b>	<b>68.10</b>	<b>2.23</b>	<b>0.00</b>	<b>0.97</b>	<b>3.86</b>	<b>49.98</b>	<b>0.13</b>	<b>235.55</b>



**Production Cost (Tk.)**

Fuel	Tk.	Fuel	Tk.
Gas	384194153.6	Hydro	96800
Coal	431616539.6	Solar	61354601.55
HFO	37956592.24	Import	277732660.7
HSD	0	Wind	1920537.6
<b>Total:</b>	<b>119,48,71,885</b>		<b>Tk.</b>

**E-W Interconnector & Import Scenario**

Energy Flow from East to West:	KWHr:	0	Import through HVDC C/B Interconnector:	MKWHr:	21.776	Peak Hr Flow	301.00 MW at 19:00 hrs
Energy Flow from West to East:	KWHr:	8660509.14	Import through Adani C/B Interconnector:	MKWHr:	25.576364	Peak Hr Flow	370.23 MW at 19:00 hrs
low during Peak Demand (W-E):	MW:	1452	Import through Cumilla C/B Interconnector:	MKWHr:	2.62944	Peak Hr Flow	24.00 MW at 19:00 hrs
Maximum Power Flow (W-E):	MW:	1602	Total Import through C/B Interconnector:	MKWHr:	49.981804	Peak Hr Flow	395.23 MW at 19:00 hrs

**Zone-wise Load-shed and Demand Summary (MW) at evening peak Hour (19:00 Hr.)**

Zone	Load-Shed	Demand
Dhaka	0	3552
Chattogram	0	1064
Cumilla	0	980
Mymensingh	0	1019
Sylhet	0	414
Khulna	0	1267
Barishal	0	315
Rajshahi	0	1097
Rangpur	0	760
<b>Total</b>	<b>0</b>	<b>10468</b>

**Status of unavailable Power Plant**

Planned S/D			Forced S/D		
SI	Plant Name	Capacity	SI	Plant Name	Capacity
1	Baghabani 100 MW GTPP	100			
2	Barapukuria TPP Unit-2	85			
3	Siddhirgonj 210 MW TPP	115			
Total		300	Total		0
<b>Total Unavailable Capacity</b>			<b>300</b>		

**Event Summary**

Outage Time	Restoration Time	Description of Event	Description of Event
08:45		Bogura 132/33kV S/S Transformer-4 HT is restored.	
08:45		Benapole 132/33kV S/S Transformer-1(406T) HT is restored.	
08:45		Bogura 132/33kV S/S Transformer-4 LT is restored.	
08:47		Benapole 132/33kV S/S Transformer-1(406T) LT is restored.	
08:48	09:00	Feni 132/33kV S/S T-2(415T) LT Scheduled S/D Due to 132kV GCB load shift to bus coupler	
08:48		Feni 132/33kV S/S T-2(415T) HT Scheduled S/D Due to 132kV GCB load shift to bus coupler	
09:25	11:02	Khulna (C) S/S Tr-3 405T HT Tripped showing No relay relays Due to 33kV PT R-ph out	10.0MW load



Power Grid Bangladesh PLC  
National Load Dispatch Center (NLDC)  
System Summary Report

Date : 10-02-2020

			interrup.
09:25	11:03	Khulna (C) S/S Tr-3 405T LT Tripped showing OC/EF(Insst earth fault) relays Due to 33KV PT R-ph fuse out	10.0MW load interrup.
09:45	15:18	Bakerganj 132/33kV S/S T1 LT Scheduled S/D Due to 33 kv feeder-2 testing and commissioning	
09:46	15:17	Bakerganj 132/33kV S/S T1 HT Scheduled S/D Due to 33 kv feeder-2 testing and commissioning	
10:30	11:03	Khulna (C) S/S Tr-3 405T LT Forced S/D Due to 33kv PT fuse maintenance	
10:30	11:02	Khulna (C) S/S Tr-3 405T HT Forced S/D Due to 33kv PT fuse maintenance	
	11:02	Khulna (C) S/S Tr-3 405T HT is restored.	
11:16	12:22	Keranigonj 230/132/33kV S/S 132 kV Hasnabd Ckt. 1 Scheduled S/D Due to Maintenance at Hasnabd end.	
12:00		Day Peak Generation: 10582 MW.	
	12:06	Mirsorai 230/33kV S/S TR-2, 728T HT is restored.	
	12:18	Mirsorai 230/33kV S/S 150 MW Power Station -01 is restored.	
	13:40	Chowmuhani-Ramganj 132 kV Ckt-1 is restored.	
14:47	15:15	Pabna 132/33kV S/S T-3 LT Forced S/D	
14:48	15:15	Pabna 132/33kV S/S T-3 HT Forced S/D	
16:55		Kalurghat grid s/s 132/33 kV (63 MVA) TR-1 transformer was charged in no-load condition	
	16:55	Kalurghat 132/33kV S/S TRFO-01(506T) HT is restored.	
17:05	17:19	Sylhet (South) S/S Trafo-1 LT Tripped showing master relay,86.1,86.2, relays Due to restriction earth fault	2.0MW load interrup.
17:05	17:18	Sylhet (South) S/S Trafo-1 HT Tripped showing master relay,86.1,86.2, relays Due to restriction earth fault	2.0MW load interrup.
17:25		Rampal 1320 MW (BIFPCL) Synchronized with remarks:- U#2	
	18:03	Ghorasal- Ishwardi 230 KV Ckt-2 is restored.	
19:00		Evening Peak Generation: 10766 MW.	
19:17		Sherpur ----Sirajgonj 132 KV ckt-1 & ckt-2 CB closed at Sirajgonj END	
23:59	01:24	Sreepur 230/132/33kV S/S Sreepur-Sirajganj Ckt-2 Forced S/D Due to Shutdown has been taken by NLDC for CT maintenance at Sirajganj end	
05:00		Minimum Generation: 7195 MW.	
07:07		Pabna 132/33kV S/S T-1 LT Scheduled S/D Due to Red hot maintenance work	
07:07		Pabna 132/33kV S/S T-1 HT Scheduled S/D Due to Red hot maintenance work	

Sub-Divisional Engineer  
Network Operation Division

Executive Engineer  
Network Operation Division

Superintendent Engineer  
Network Operation Division