



Power Grid Bangladesh PLC
National Load Dispatch Center (NLDC)
System Summary Report

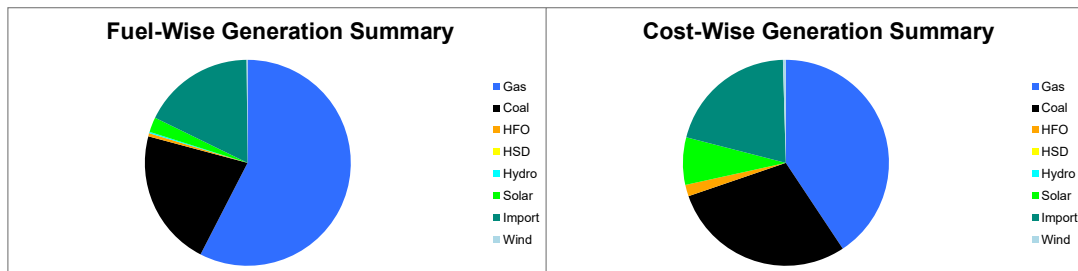
Date : 12-02-2026

Power Supply Scenario

Day Peak Generation	7265.55	MW	09:00 Hr.	Energy Generated	171.70542	MKWHr.
Day Peak Demand	7265.55	MW	09:00 Hr.	Energy Unserviced	0.00000	MKWHr.
Evening Peak Generation	8261	MW	19:00 Hr.	Energy Demand	171.70542	MKWHr.
Evening Peak Demand	8261	MW	19:00 Hr.	Maximum Temperature	29.30	°C
Minimum Generation of the Day	5872.31	MW	16:00 Hr.	Total Gas Supplied	742.41	MMCFD
Maximum Generation of the Day	8261	MW	19:00 Hr.	Production Cost per KWHr	4.91048	Tk.

Zone-wise Generation Summary (MKWHr.)

	Gas	Coal	HFO	HSD	Hydro	Solar	Import	Wind	Total
Dhaka Zone	23.32	0.00	0.07	0.00	0.00	0.19	0.00	0.00	23.59
Chattogram Zone	4.80	15.90	0.00	0.00	0.35	0.15	0.00	0.26	21.46
Cumilla Zone	21.19	0.00	0.00	0.00	0.00	0.45	0.35	0.00	22.00
Mymensingh Zone	3.39	0.00	0.82	0.00	0.00	0.30	0.00	0.00	4.50
Sylhet Zone	19.18	0.00	0.00	0.00	0.00	0.06	0.00	0.00	19.24
Khulna Zone	7.32	9.06	0.00	0.00	0.00	0.57	10.12	0.00	27.07
Barishal Zone	7.44	10.79	0.00	0.00	0.00	0.00	0.00	0.00	18.24
Rajshahi Zone	12.20	0.00	0.00	0.00	0.00	1.35	19.85	0.00	33.40
Rangpur Zone	0.00	1.31	0.00	0.00	0.00	0.90	0.00	0.00	2.21
Total	98.84	37.07	0.89	0.00	0.35	3.97	30.33	0.26	171.71



Production Cost (Tk.)

Fuel	Tk.	Fuel	Tk.
Gas	343265859	Hydro	34800
Coal	244664214.9	Solar	62530469.06
HFO	15349975.2	Import	173455581.1
HSD	0	Wind	3855196.8
Total:	84,31,56,095		Tk.

E-W Interconnector & Import Scenario

Energy Flow from East to West:	KWHr:	0	Import through HVDC C/B Interconnector:	MKWHr:	10.122181	Peak Hr Flow	1.00 MW at 19:00 hr
Energy Flow from West to East:	KWHr:	15300001.47	Import through Adani C/B Interconnector:	MKWHr:	19.850083	Peak Hr Flow	2.00 MW at 19:00 hr
Power Flow during Peak Demand (W-E):	MW:	752	Import through Cumilla C/B Interconnector:	MKWHr:	0.35328	Peak Hr Flow	6.00 MW at 19:00 hrs
Maximum Power Flow (W-E):	MW:	1293	Total Import through C/B Interconnector:	MKWHr:	30.325544	Peak Hr Flow	99.00 MW at 19:00 hr

Zone-wise Load-shed and Demand Summary (MW) at evening peak Hour (19:00 Hr.)

Zone	Load-Shed	Demand
Dhaka	0	2331
Chattogram	0	725
Cumilla	0	820
Mymensingh	0	859
Sylhet	0	356
Khulna	0	1052
Barishal	0	280
Rajshahi	0	873
Rangpur	0	636
Total	0	7932

Status of unavailable Power Plant

Planned S/D			Forced S/D		
Sl	Plant Name	Capacity	Sl	Plant Name	Capacity
1	Baghabari 100 MW GTPP	100			
2	Barapukuria TPP Unit-2	85			
3	Siddhirgonj 210 MW TPP	115			
Total		300	Total		0
Total Unavailable Capacity			300		

Event Summary

Outage Time	Restoration Time	Description of Event	Description of Event
11:21		Bibiyana-3 400 MW CCPP ST was sync.	
11:21		Bibiyana-III 400 MW CCPP Synchronized with remarks:- ST	
13:20		Sylhet (South) S/S Trafo-1 LT Tripped showing REF615 (ABB) relays Due to 33 kv Feeder fault.	
13:20		Sylhet (South) S/S Trafo-1 HT Tripped showing BCPU & Differential Protection Relay relays Due to 33 Kv Feeder Trip	
13:35		Bheramara 410 MW CCPP, FGMO is OFF with remarks:-	
19:00		Evening Peak Generation: 8261 MW.	
00:15		Ashuganj CCPP 225 MW Shutdown with remarks:- ST	
00:32		Ashuganj CCPP 225 MW Shutdown with remarks:- GT	
05:00		Minimum Generation: 5563 MW.	