



Power Grid Bangladesh PLC
National Load Dispatch Center (NLDC)
System Summary Report

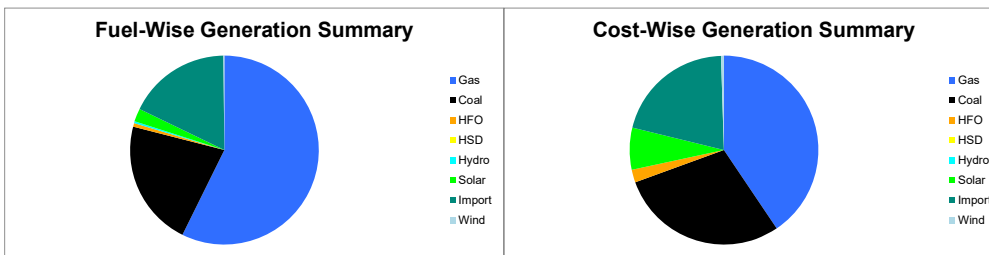
Date : 13-UZ-2020

Power Supply Scenario

Day Peak Generation	9620.03	MW	12.00 Hr.	Energy Generated	194.20638	MKWHr.
Day Peak Demand	9620.03	MW	12.00 Hr.	Energy Unserviced	0.00000	MKWHr.
Evening Peak Generation	9773.57	MW	19.00 Hr.	Energy Demand	194.20638	MKWHr.
Evening Peak Demand	9773.57	MW	19.00 Hr.	Maximum Temperature	28.10	°C
Minimum Generation of the Day	5563	MW	05.00 Hr.	Total Gas Supplied	844.45	MMCFD
Maximum Generation of the Day	10388.37	MW	13.00 Hr.	Production Cost per KWHR	4.92826	Tk.

Zone-wise Generation Summary (MKWHr.)

	Gas	Coal	HFO	HSD	Hydro	Solar	Import	Wind	Total
Dhaka Zone	27.05	0.00	0.30	0.00	0.00	0.20	0.00	0.00	27.55
Chattogram Zone	5.40	15.63	0.00	0.00	0.64	0.15	0.00	0.32	22.14
Cumilla Zone	21.69	0.00	0.00	0.00	0.00	0.46	0.51	0.00	22.65
Mymensingh Zone	3.53	0.00	0.87	0.00	0.00	0.29	0.00	0.00	4.69
Sylhet Zone	24.68	0.00	0.00	0.00	0.00	0.06	0.00	0.00	24.75
Khulna Zone	8.27	10.56	0.00	0.00	0.00	0.58	10.95	0.00	30.36
Barishal Zone	7.74	14.65	0.00	0.00	0.00	0.00	0.00	0.00	22.40
Rajshahi Zone	12.98	0.00	0.00	0.00	0.00	1.37	22.86	0.00	37.20
Rangpur Zone	0.00	1.25	0.00	0.00	0.00	1.21	0.00	0.00	2.47
Total	111.35	42.09	1.17	0.00	0.64	4.32	34.31	0.32	194.21



Production Cost (Tk.)

Fuel	Tk.	Fuel	Tk.
Gas	388150516.3	Hydro	64000
Coal	276790042.1	Solar	68872478.02
HFO	20663244	Import	197892099.7
HSD	0	Wind	4667188.8
Total:	95,70,99,568		Tk.

E-W Interconnector & Import Scenario

Energy Flow from East to West:	KWHr:	0	Import through HVDC C/B Interconnector:	MKWHr:	10.948363	Peak Hr Flow:	5.00 MW at 19:00 hr
Energy Flow from West to East:	KWHr:	20474001.8	Import through Adani C/B Interconnector:	MKWHr:	22.85586	Peak Hr Flow:	11.57 MW at 19:00 hr
Flow during Peak Demand (W-E):	MW:	1505	Import through Cumilla C/B Interconnector:	MKWHr:	0.50784	Peak Hr Flow:	1.00 MW at 19:00 hr
Maximum Power Flow (W-E):	MW:	1699	Total Import through C/B Interconnector:	MKWHr:	34.312063	Peak Hr Flow:	16.57 MW at 19:00 hr

Zone-wise Load-shed and Demand Summary (MW) at evening peak Hour (19:00 Hr.)

Zone	Load-Shed	Demand
Dhaka	0	2935
Chattogram	0	1046
Cumilla	0	914
Mymensingh	0	974
Sylhet	0	375
Khulna	0	1144
Barishal	0	294
Rajshahi	0	1005
Rangpur	0	715
Total	0	9402

Status of unavailable Power Plant

Planned S/D			Forced S/D		
SI	Plant Name	Capacity	SI	Plant Name	Capacity
1	Baghabari 100 MW GTPP	100			
2	Barapukuria TPP Unit-2	85			
3	Siddhirgonj 210 MW TPP	115			
Total		300	Total		0
Total Unavailable Capacity			300		

Event Summary

Outage Time	Restoration Time	Description of Event	Description of Event
10:20	11:13	Barapukuria 230/132/33kV S/S 132/33 KV T-5, 424T LT Forced S/D Due to Red hot maintenance	
10:23	11:12	Barapukuria 230/132/33kV S/S 132/33 KV T-5, 424T HT Forced S/D Due to Red hot maintenance	
11:42		BIPTC S/S 10CF16 Tripped showing 87.1 Differential Relay relays Due to Differential Protection Stage-1 Operated	
11:45	11:56	Nawabganj 132/33kV S/S TR-2 LT Tripped showing Differential protection P142 relays Due to For 33 kv pbs nikra feeder.	
12:16		Bibiayana-III 400 MW CCPP, FGMO is ON with remarks:-	
17:52	20:19	Chauddagram 132/33kV S/S 132 kv bus-2 Tripped showing Protection controlling relay.	



Power Grid Bangladesh PLC
National Load Dispatch Center (NLDC)
System Summary Report

Date : 13-UZ-2020
relays Due to Relay Fault.

17:52 20:20 Chauddagram-Cumilla(S) 132 kV Ckt-2 Tripped from Chauddagram 132/33kV end showing Main-01 Protection Relay. relays.

17:52 Chauddagram-Feni 132 kV Ckt-2 Tripped from Chauddagram 132/33kV end showing Busbar Protection Unit FN6 relays Due to Relay

17:52 20:29 Chauddagram 132/33kV S/S 132 kv T-2 HT Tripped showing No relay alarm relays Due to Bus coupler fault.

04:00 Minimum Generation: 6719 MW.

07:22 Khulna (C) S/S TR-1 425T LT Forced S/D Due to For Red Hot maintenance.

07:23 Khulna (C) S/S TR-1 425T HT Forced S/D Due to For Red Hot maintenance.

07:54 Bheramara 410 MW CAPP, FGMO is ON with remarks:-

07:55 Bogura 400/230kV S/S 400 KV Reactor (125 MVAR) Forced S/D

Sub-Divisional Engineer
Network Operation Division

Executive Engineer
Network Operation Division

Superintendent Engineer
Network Operation Division