



Power Grid Bangladesh PLC  
National Load Dispatch Center (NLDC)  
System Summary Report

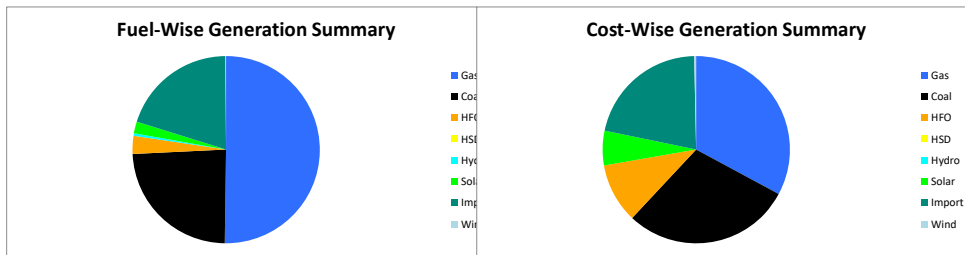
Date : 14-02-2026

Power Supply Scenario

Day Peak Generation	11013.85	MW	12:00 Hr.	Energy Generated	232.99733	MKWHr.
Day Peak Demand	11013.85	MW	12:00 Hr.	Energy Unserviced	0.00000	MKWHr.
Evening Peak Generation	11725.77	MW	19:00 Hr.	Energy Demand	232.99733	MKWHr.
Evening Peak Demand	11725.77	MW	19:00 Hr.	Maximum Temperature	28.50	°C
Minimum Generation of the Day	6719.06	MW	04:00 Hr.	Total Gas Supplied	808.80	MMCFD
Maximum Generation of the Day	11725.77	MW	19:00 Hr.	Production Cost per KWHr	5.32806	Tk.

Zone-wise Generation Summary (MKWHr.)

	Gas	Coal	HFO	HSD	Hydro	Solar	Import	Wind	Total
Dhaka Zone	30.20	0.00	3.38	0.00	0.00	0.23	0.00	0.00	33.80
Chattogram Zone	5.88	26.09	0.81	0.00	0.95	0.15	0.00	0.31	34.19
Cumilla Zone	20.17	0.00	0.64	0.00	0.00	0.45	1.70	0.00	22.96
Mymensingh Zone	3.28	0.00	1.35	0.00	0.00	0.30	0.00	0.00	4.93
Sylhet Zone	26.19	0.00	0.00	0.00	0.00	0.06	0.00	0.00	26.25
Khulna Zone	9.28	11.97	0.07	0.00	0.00	0.60	17.53	0.00	39.45
Barishal Zone	8.42	16.62	0.14	0.00	0.00	0.00	0.00	0.00	25.18
Rajshahi Zone	13.60	0.00	0.19	0.00	0.00	1.58	27.51	0.00	42.89
Rangpur Zone	0.00	1.30	0.75	0.00	0.00	1.30	0.00	0.00	3.35
<b>Total</b>	<b>117.03</b>	<b>55.98</b>	<b>7.33</b>	<b>0.00</b>	<b>0.95</b>	<b>4.66</b>	<b>46.74</b>	<b>0.31</b>	<b>233.00</b>



Production Cost (Tk.)

Fuel	Tk.	Fuel	Tk.
Gas	407535144.8	Hydro	95200
Coal	362344256.5	Solar	74136134.22
HFO	127418919	Import	265262750.6
HSD	0	Wind	4631884.8
<b>Total:</b>	<b>124,14,24,289</b>	<b>Tk.</b>	

E-W Interconnector & Import Scenario

Energy Flow from East to West:	KWHr:	0	Import through HVDC C/B Interconnector:	MKWHr:	17.528	Peak Hr Flow	712.00 MW at 19:00 hrs.
Energy Flow from West to East:	KWHr:	27280003.1	Import through Adani C/B Interconnector:	MKWHr:	27.514499	Peak Hr Flow	1460.27 MW at 19:00 hrs.
Low during Peak Demand (W-E):	MW:	1435	Import through Cumilla C/B Interconnector:	MKWHr:	1.69728	Peak Hr Flow	126.00 MW at 19:00 hrs.
Maximum Power Flow (W-E):	MW:	2063	Total Import through C/B Interconnector:	MKWHr:	46.739779	Peak Hr Flow	2298.27 MW at 19:00 hrs.

Zone-wise Load-shed and Demand Summary (MW) at evening peak Hour (19:00 Hr.)

Zone	Load-Shed	Demand
Dhaka	0	4107
Chattogram	0	1120
Cumilla	0	1016
Mymensingh	0	1036
Sylhet	0	416
Khulna	0	1279
Barishal	0	321
Rajshahi	0	1135
Rangpur	0	788
<b>Total</b>	<b>0</b>	<b>11218</b>

Status of unavailable Power Plant

Planned S/D			Forced S/D		
Sl	Plant Name	Capacity	Sl	Plant Name	Capacity
1	Baghabari 100 MW GTTP	100			
2	Barapukuria TPP Unit-2	85			
3	Siddhirgonj 210 MW TPP	115			
Total		300	Total		0
<b>Total Unavailable Capacity</b>			<b>300</b>		

Event Summary

Outage Time	Restoration Time	Description of Event	Description of Event
08:51	15:12	Halishahar 132/33kV S/S 415T(TR-2) HT Scheduled S/D Due to Annual maintenance	
09:29		Ghorasal Repowered CAPP Unit-4 Synchronized	
10:33		SS Power Bashkhali Unit-2 was synchronized	
10:33		SS Power Synchronized	
11:03		Khulna (C) S/S TR-1 425T HT is restored.	
11:04		Khulna (C) S/S TR-1 425T LT is restored.	



Power Grid Bangladesh PLC  
National Load Dispatch Center (NLDC)  
System Summary Report

Date : 14-02-2026

11:14	13:35	Khulna (C) S/S Tr-2 415 T HT Scheduled S/D Due to Red hot maintenance	
11:14	13:35	Khulna (C) S/S Tr-2 415 T LT Scheduled S/D Due to Red hot maintenance	
11:48	12:04	Halishahar 132/33kV S/S 405T(TR-1) LT Tripped showing F51 relay relays Due to Due to 33 kv feeder fault.	32.0MW load interrup.
12:00		Day peak generation 11010 MW	
12:04	12:09	Cumilla(S) 132/33kV S/S TR-3 HT Scheduled S/D Due to None	
12:09	12:10	Cumilla(S) 132/33kV S/S TR-3 LT Scheduled S/D	
12:17	12:18	Cumilla(S) 132/33kV S/S TR-1 HT Scheduled S/D Due to None	
12:17	12:18	Cumilla(S) 132/33kV S/S TR-1 LT Scheduled S/D Due to None	
12:25	12:26	Cumilla(S) 132/33kV S/S TR-2 HT Scheduled S/D	
12:25	12:27	Cumilla(S) 132/33kV S/S TR-2 LT Scheduled S/D Due to None	
12:27		Cumilla (S) all transformers are shifted to Tripura side bus	
13:38		Ghorasal Repowered CCGP Unit-4 Shutdown	
	13:46	Chauddagram-Feni 132 kV Ckt-2 is restored.	
14:11	15:30	Khulna (C) S/S TR-1 425T LT Scheduled S/D Due to incoming bus loop tightening	
14:11	15:29	Khulna (C) S/S TR-1 425T HT Scheduled S/D Due to incoming bus loop tightening	
15:00	15:05	Ghatail 132/33kV S/S T-1 LT Scheduled S/D Due to SPS Installation	
15:30	15:35	Ghatail 132/33kV S/S T-2 LT Scheduled S/D Due to SPS Installation	
18:06		Matarbari 2*600 MW (CPGCBL) Synchronized with remarks:- U-1	
18:39		Ashuganj CCGP 225 MW Synchronized with remarks:- GT	
19:00		Evening Peak Generation: 11725 MW.	
22:06		Chandpur CCGP GT was sync.	
	23:50	Bogura 400/230kV S/S 400 KV Reactor (125 MVAR) is restored.	
01:15		Ashuganj 225 MW CCGP ST was sync.	
01:15		Ashuganj CCGP 225 MW Synchronized with remarks:- ST	
05:00		Minimum Generation is 7691 MW.	
07:37		Bogura 400/230kV S/S 400 KV Reactor (125 MVAR) Forced S/D Due to Aldc Instruction.	

Sub-Divisional Engineer  
Network Operation Division

Executive Engineer  
Network Operation Division

Superintendent Engineer  
Network Operation Division