



**Power Grid Bangladesh PLC  
National Load Dispatch Center (NLDC)  
System Summary Report**

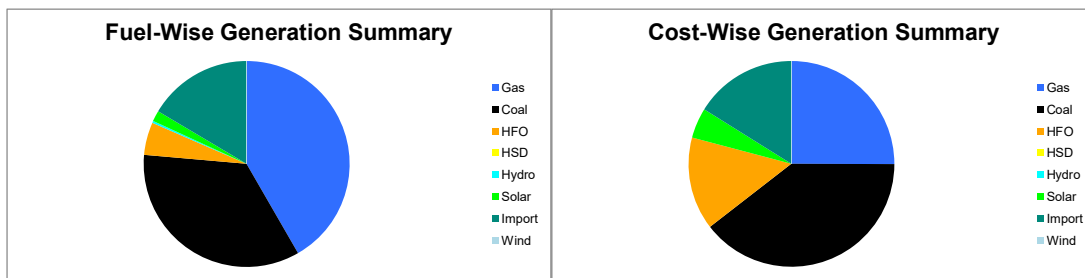
Date : 07-00-2020

**Power Supply Scenario**

Day Peak Generation	13171.98	MW	12:00 Hr.	Energy Generated	298.10361	MKWHr.
Day Peak Demand	13171.98	MW	12:00 Hr.	Energy Unserverd	0.68500	MKWHr.
Evening Peak Generation	14451.57	MW	19:30 Hr.	Energy Demand	298.78861	MKWHr.
Evening Peak Demand	14634.57	MW	19:30 Hr.	Maximum Temperature	32.50	°C
Minimum Generation of the Day	10508.5	MW	05:00 Hr.	Total Gas Supplied	909.49	MMCFD
Maximum Generation of the Day	14451.57	MW	19:30 Hr.	Production Cost per KWHr	5.82568	Tk.

**Zone-wise Generation Summary (MKWHr.)**

	Gas	Coal	HFO	HSD	Hydro	Solar	Import	Wind	Total
Dhaka Zone	34.40	0.00	7.91	0.00	0.00	0.22	0.00	0.00	42.53
Chattogram Zone	5.38	44.98	1.74	0.00	1.01	0.11	0.00	0.03	53.26
Cumilla Zone	29.42	0.00	1.36	0.00	0.00	0.35	3.18	0.00	34.31
Mymensingh Zone	0.02	0.00	2.04	0.00	0.00	0.31	0.00	0.00	2.37
Sylhet Zone	27.98	0.00	0.00	0.00	0.00	0.07	0.00	0.00	28.05
Khulna Zone	2.34	21.72	0.01	0.00	0.00	0.65	20.92	0.00	45.64
Barishal Zone	8.49	36.55	0.00	0.00	0.00	0.00	0.00	0.00	45.04
Rajshahi Zone	16.25	0.00	0.57	0.00	0.00	1.54	24.92	0.00	43.28
Rangpur Zone	0.00	0.21	1.63	0.00	0.00	1.78	0.00	0.00	3.62
<b>Total</b>	<b>124.29</b>	<b>103.47</b>	<b>15.26</b>	<b>0.00</b>	<b>1.01</b>	<b>5.04</b>	<b>49.02</b>	<b>0.03</b>	<b>298.10</b>



**Production Cost (Tk.)**

Fuel	Tk.	Fuel	Tk.
Gas	434355379.3	Hydro	100842
Coal	686581686.7	Solar	82271591.08
HFO	253188227.4	Import	279663677.1
HSD	0	Wind	494256
<b>Total:</b>	<b>173,66,55,659</b>	<b>Total:</b>	<b>1,00,84,256</b>

**E-W Interconnector & Import Scenario**

Energy Flow from East to West:	KWHr:	0	Import through HVDC C/B Interconnector:	MKWHr:	20.92	Peak Hr Flow	921.00 MW at 19:30 hrs.
Energy Flow from West to East:	KWHr:	45501000	Import through Adani C/B Interconnector:	MKWHr:	24.915273	Peak Hr Flow	1450.37 MW at 19:30 hrs.
Energy Flow during Peak Demand (W-E):	MW:	2392	Import through Cumilla C/B Interconnector:	MKWHr:	3.18048	Peak Hr Flow	134.00 MW at 19:30 hrs.
Maximum Power Flow (W-E):	MW:	2794	Total Import through C/B Interconnector:	MKWHr:	49.015753	Peak Hr Flow	2505.37 MW at 19:30 hrs.

**Zone-wise Load-shed and Demand Summary (MW) at evening peak Hour (19:30 Hr.)**

Zone	Load-Shed	Demand
Dhaka	40	5382
Chattogram	10	1440
Cumilla	0	1325
Mymensingh	105	1077
Sylhet	0	571
Khulna	20	1586
Barishal	0	406
Rajshahi	0	1397
Rangpur	0	964
<b>Total</b>	<b>175</b>	<b>14148</b>

**Status of unavailable Power Plant**

Planned S/D			Forced S/D		
Sl	Plant Name	Capacity	Sl	Plant Name	Capacity
1	Baghabari 100 MW GTPP	100			
2	Barapukuria TPP Unit-2	85			
3	Siddhirgonj 210 MW TPP	115			
Total		300	Total		0
<b>Total Unavailable Capacity</b>			<b>300</b>		

**Event Summary**

Outage Time	Restoration Time	Description of Event	Description of Event
09:16	09:34	Noapara 132/33kV S/S T-1 HT Forced S/D Due to Removal of kites from T-1 gentry tower.	
09:16	09:34	Noapara 132/33kV S/S T-1 LT Forced S/D Due to Removal of kites from T-1 gentry tower.	
10:04	22:58	Baghabari-Roppur 230kV Ckt-2 Project Work S/D from Baghabari 230/132kV end Due to DFDR Commissioning	
10:54	11:11	Kishoreganj 132/33kV S/S Tr-3 (424T) LT Tripped showing P40 agile relays Due to Due to PBS 33 KV Pakundia feeder trip.	25.0MW load interrupt.
12:00		Day Peak Generation: 13168 MW.	
	13:29	Kushtia 132/33kV S/S T-1 HT is restored.	



**Power Grid Bangladesh PLC  
National Load Dispatch Center (NLDC)  
System Summary Report**

Date : 07-07-2020

13:31	Kushtia 132/33kV S/S T-1 LT is restored.	
13:35	19:18 Tongi 230/132/33kV S/S T-04 LT Scheduled S/D	
13:35	19:18 Tongi 230/132/33kV S/S T-04 HT Scheduled S/D	
13:40	19:00 Korerhat 400/230/132kV S/S Hathajari-2 Project Work S/D	
15:33	19:53 Kabirpur -Tongi 132kV Ckt-1 Project Work S/D from Tongi 230/132/33kV end.	
16:32	20:25 Purbasadipur-Thakurgaon-EPV 132kV Ckt-2 Project Work S/D from Purbasadipur 230/132/33kV end Due to Relay rectification	
16:36	Barapukuria-Bogura 230 kV Ckt-1 is restored.	
17:12	Purbasadipur-Saidpur 132kV Ckt-2 Project Work S/D from Purbasadipur 230/132/33kV end Due to Project work	
18:37	Barishal-Barishal(N) 132 kV Ckt-1 is restored.	
18:37	Barishal-Barishal(N) 132 kV Ckt-1 is restored.	
19:30	Evening Peak Generation is 14451 MW.	
19:51	Khulna(C )-Noapara 132kV Ckt-2 is restored.	
22:42	23:24 Rampura-Ullon-2 132kV Ckt-2 Tripped from Rampura 230/132kV end showing Distance protection 21/2, Z1 BN. relays Due to Weather	
03:55	Ashuganj 450 MW CCPP(South) Shutdown with remarks:- ST	
04:10	Ashuganj 450 MW CCPP(South) Shutdown with remarks:- GT	
04:59	Mymensingh 132/33kV S/S T-1 Bus is restored.	
05:48	Kishoreganj-Mymensingh 132kV Ckt-1 Project Work S/D from Kishoreganj 132/33kV end Due to 400 kV Shomvugonj line conductor stringing work. and from Mymensingh 132/33kVend.	
06:00	Minimum generation 10608 MW	
06:02	06:50 Halishahar-Julda 132kV Ckt-1 Forced S/D from Halishahar 132/33kV end Due to Due to romove bird nest from Julda line Gantry. and from Juldah 132/33kV end Due to S/D Taken from halishahar end to remove bird nest .	
06:12	Kishoreganj-Mymensingh 132kV Ckt-2 Project Work S/D from Kishoreganj 132/33kV end Due to 400 kV Shomvugonj line conductor stringing work.	
06:42	Aminbazar 400/230/132kV S/S 230/132kv Tr-03 LT Scheduled S/D Due to Red hot maintenance	
06:43	Aminbazar 400/230/132kV S/S 230/132kv Tr-03 HT Scheduled S/D Due to Red hot maintenance	
07:15	Faridpur 132/33kV S/S Transformer-1 LT Scheduled S/D Due to Red hot maintenance.	25.0MW load interrup.
07:15	Faridpur 132/33kV S/S Transformer-1 HT Scheduled S/D	25.0MW load interrup.
07:34	Barapukuria-Bogura 230 kV Ckt-1 Forced S/D from Bogura 400/230kV end Due to Conductor Stringing In Barapukuria Side. and from Barapukuria 230/132/33kV end Due to conductor stringing (G2G project)	
07:35	Nabinagar 132/33kV S/S Nabinagar-Dhamrai Ckt-1 Project Work S/D Due to Scaffolding removing work from Nabinagar-Dhamrai line.	
07:40	Khulna(C )-Noapara 132kV Ckt-2 Scheduled S/D from Noapara 132/33kV end Due to By the instruction of ALDC. and from Khulna (C) end Due to Project work.	
07:40	Aminbazar 400/230/132kV S/S 132 kv Bus 01 Scheduled S/D Due to Red hot maintenance	
07:44	Nabinagar 132/33kV S/S Nabinagar-Dhamrai Ckt-2 Project Work S/D Due to Scaffolding removing work from Nabinagar-Dhamrai line.	20.0MW load interrup.
07:53	Barishal-Barishal(N) 132 kV Ckt-1 Scheduled S/D from Barishal 132/33kV end Due to OPGW Upgrtation work of OFCN and from Barishal 230/132kV end Due to Replace of OPGW	

Sub-Divisional Engineer  
Network Operation Division

Executive Engineer  
Network Operation Division

Superintendent Engineer  
Network Operation Division