



Power Grid Bangladesh PLC
National Load Dispatch Center (NLDC)
System Summary Report

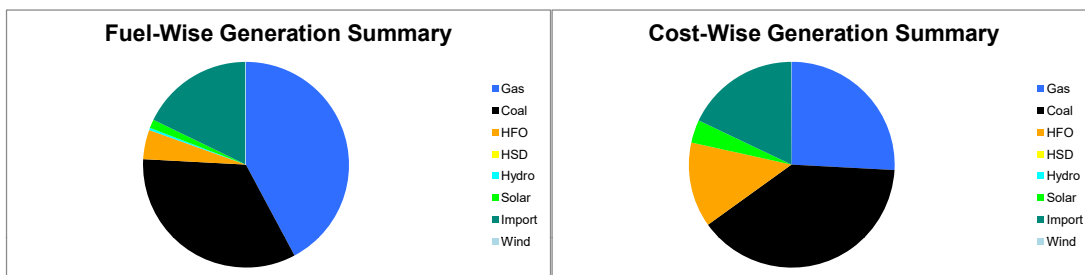
Date : 08-05-2026

Power Supply Scenario

Day Peak Generation	12165	MW	12:00 Hr.	Energy Generated	292.85615	MKWHr.
Day Peak Demand	12165	MW	12:00 Hr.	Energy Unserverd	0.42900	MKWHr.
Evening Peak Generation	13986.97	MW	21:00 Hr.	Energy Demand	293.28515	MKWHr.
Evening Peak Demand	13986.97	MW	21:00 Hr.	Maximum Temperature	35.00	°C
Minimum Generation of the Day	10610.74	MW	06:00 Hr.	Total Gas Supplied	925.81	MMCFD
Maximum Generation of the Day	13986.97	MW	21:00 Hr.	Production Cost per KWHr	5.73064	Tk.

Zone-wise Generation Summary (MKWHr.)

	Gas	Coal	HFO	HSD	Hydro	Solar	Import	Wind	Total
Dhaka Zone	34.53	0.00	7.63	0.00	0.00	0.24	0.00	0.00	42.40
Chattogram Zone	5.45	39.94	1.49	0.00	1.01	0.12	0.00	0.06	48.08
Cumilla Zone	29.63	0.00	1.21	0.00	0.00	0.47	3.23	0.00	34.55
Mymensingh Zone	0.13	0.00	2.45	0.00	0.00	0.33	0.00	0.00	2.91
Sylhet Zone	28.09	0.00	0.00	0.00	0.00	0.09	0.00	0.00	28.18
Khulna Zone	2.48	23.11	0.00	0.00	0.00	0.78	21.26	0.00	47.62
Barishal Zone	8.11	34.50	0.00	0.00	0.00	0.01	0.00	0.00	42.62
Rajshahi Zone	15.13	0.00	0.14	0.00	0.00	1.67	27.57	0.00	44.51
Rangpur Zone	0.00	1.13	0.61	0.00	0.00	0.26	0.00	0.00	2.00
Total	123.55	98.68	13.53	0.00	1.01	3.96	52.06	0.06	292.86



Production Cost (Tk.)

Fuel	Tk.	Fuel	Tk.
Gas	433712084.2	Hydro	101238
Coal	658565978.8	Solar	60408138.03
HFO	224736212.7	Import	299775275
HSD	0	Wind	953208
Total:	167,82,52,134		Tk.

E-W Interconnector & Import Scenario

Energy Flow from East to West:	KWHr:	0	Import through HVDC C/B Interconnector:	MKWHr:	21.261818	Peak Hr Flow	879.00 MW at 21:00 hrs.
Energy Flow from West to East:	KWHr:	46889400.05	Import through Adani C/B Interconnector:	MKWHr:	27.566546	Peak Hr Flow	1330.47 MW at 21:00 hrs.
Energy during Peak Demand (W-E):	MW:	2106	Import through Cumilla C/B Interconnector:	MKWHr:	3.23136	Peak Hr Flow	156.00 MW at 21:00 hrs.
Maximum Power Flow (W-E):	MW:	2508	Total Import through C/B Interconnector:	MKWHr:	52.059724	Peak Hr Flow	2365.47 MW at 21:00 hrs.

Zone-wise Load-shed and Demand Summary (MW) at evening peak Hour (21:00 Hr.)

Zone	Load-Shed	Demand
Dhaka	0	4886
Chattogram	0	1421
Cumilla	0	1434
Mymensingh	0	1013
Sylhet	0	600
Khulna	0	1644
Barishal	0	425
Rajshahi	0	1334
Rangpur	0	738
Total	0	13495

Status of unavailable Power Plant

Planned S/D			Forced S/D		
Sl	Plant Name	Capacity	Sl	Plant Name	Capacity
1	Baghabari 100 MW GTPP	100			
2	Barapukuria TPP Unit-2	85			
3	Siddhirgonj 210 MW TPP	115			
Total			Total		
300			0		
Total Unavailable Capacity			300		

Event Summary

Outage Time	Restoration	Description of Event	Description of Event
08:18	00:01	Sreepur 230/132/33kV S/S 132/33 kV T-2 LT Project Work S/D Due to CT & Loop Conductor change by CCCE	50.0MW load interrupt.
08:18	00:00	Sreepur 230/132/33kV S/S 132/33 kV T-2 HT Project Work S/D Due to CT & Loop Conductor change by CCCE	
08:43	16:30	Maniknagar 132/33kV S/S Transformer GT-1 HT Scheduled S/D Due to DPDC-PDSD project works by DPDC	
08:54	13:17	Barapukuria 230/132/33kV S/S 132/33 KV T-4, 444T LT Scheduled S/D Due to emergency maintenance	25.0MW load interrupt.
08:55	13:15	Barapukuria 230/132/33kV S/S 132/33 KV T-4, 444T HT Scheduled S/D Due to emergency maintenance	25.0MW load interrupt.
	09:13	Nabinagar 132/33kV S/S Nabinagar-Dhamrai Ckt-1 is restored.	
	09:13	Nabinagar 132/33kV S/S Nabinagar-Dhamrai Ckt-2 is restored.	
09:41	11:15	Kabirpur 132/33kV S/S XFR, T-3 HT Forced S/D Due to High Temperature maintenance work.	
09:41	11:19	Kabirpur 132/33kV S/S XFR, T-3 LT Forced S/D Due to High Temperature Maintenance Work	
09:50	18:04	Purbasadipur-Saidpur 132kV Ckt-2 Project Work S/D from Saidpur 132/33kV end Due to For project work.	
	11:16	Faridpur 132/33kV S/S Transformer-1 HT is restored.	
	11:17	Faridpur 132/33kV S/S Transformer-1 LT is restored.	
11:47	12:48	Taraganj 132/33kV S/S Taraganj-Rangpur CKT-02 Tripped showing Y Phase	



**Power Grid Bangladesh PLC
National Load Dispatch Center (NLDC)
System Summary Report**

Date : 08-05-2026

PickupZone-1(14.72km)AR Lockout relays Due to heavy rain and strom

11:48	12:44	Rangpur-Saidpur 132kV Ckt-2 Tripped from Rangpur 132/33kV end showing Distance relays Due to heavy Storm	
13:15	14:49	Jhenaidah 230/132kV S/S Jhenaidah2-Jashore Ckt-2 Tripped showing over current relay relays.	
13:15	16:13	Jhenaidah 230/132kV S/S Jhenaidah2-Jashore Ckt-1 Tripped showing Distance relay relays.	
13:16		Jashore 132/33kV S/S Cap. Bank-1 Tripped showing 86 relays Due to Grid failed	
	13:59	Khulna(C)-Noapara 132kV Ckt-1 is restored.	
	14:00	Khulna(C)-Noapara 132kV Ckt-2 is restored.	
15:03	18:02	Barapukuria 230/132/33kV S/S 132/33 KV T-3, 404T LT Scheduled S/D Due to emergency maintenance work	15.0MW load interrup.
15:05	18:00	Barapukuria 230/132/33kV S/S 132/33 KV T-3, 404T HT Scheduled S/D Due to emergency maintenance work	15.0MW load interrup.
	18:01	Kishoreganj-Mymensingh 132kV Ckt-2 is restored.	
	18:18	Kishoreganj-Mymensingh 132kV Ckt-1 is restored.	
	18:51	Barishal-Barishal(N) 132 KV Ckt-1 is restored.	
	18:51	Barishal-Barishal(N) 132 KV Ckt-1 is restored.	
	19:40	Barapukuria-Bogura 230 kV Ckt-1 is restored.	
21:00		Evening Peak Generation is 13986 MW.	
02:05	03:24	Bogura(New)-Bogura(Sherpur) 132 kV Ckt-1 Tripped from Bogura 230/132kV end showing Distance PROT.N. Relay:LO Recloser, Fault type C to G, Zone 1, A/R in PROGRESS, Carrier send, Carrier Receive, relays Due to Storm and from Bog-Sherpur 132/33kV end showing Micom-P443 relays.	
	04:19	Chandina 132/33kV S/S TR-2 HT is restored.	
	04:21	Chandina 132/33kV S/S TR-2 LT is restored.	
04:55		Haripur 412 MW CAPP Shutdown with remarks:- ST	
05:05		Haripur 412 MW CAPP Synchronized	
06:00		Minimum Generation: 11065 MW.	
06:26		Baroaulia-Hathazari 132 kV Ckt-1 Scheduled S/D from Baroaulia 132/33kV end Due to Baroaulia-Hathazari ckt-01 165 no tower to 166no tower and 166no tower to Gentry. OPGW Wire Pulling Work	28.0MW load interrup. Baroaulia 132/33kV end
06:32		Chandpur 132/33kV S/S 402T (T-01) HT Scheduled S/D Due to Maintainace	
06:32		Chandpur 132/33kV S/S 402T (T-01) LT Scheduled S/D Due to Maintainace	10.0MW load interrup.
06:33		Coxsazar 132/33kV S/S 415T-T2 HT Project Work S/D Due to Commission the new CRP of Transformer-3 & 33kv Incomer-3 at New Control Room.	90.0MW load interrup.
06:54		Barishal-Barishal(N) 132 kV Ckt-1 Project Work S/D from Barishal 230/132kV end Due to OPGW change	
07:25		Chuadanga 132/33kV S/S 132kV Tr. T2(426T) LT Scheduled S/D	40.0MW load interrup.
07:25		Chuadanga 132/33kV S/S 132kV Tr. T3 LT Scheduled S/D	40.0MW load interrup.
07:26		Chuadanga 132/33kV S/S 132kV Tr. T2(426T) HT Scheduled S/D	45.0MW load interrup.
07:27		Chuadanga 132/33kV S/S 132kV Tr. T3 HT Scheduled S/D	40.0MW load interrup.
07:35		Feni 132/33kV S/S T-1(405T) HT Scheduled S/D Due to Shutdown taken for PDB 33 KV bus loop maintenance work.	40.0MW load interrup.
07:36		Feni 132/33kV S/S T-1(405T) LT Scheduled S/D Due to Shutdown taken for PDB 33 KV bus loop maintenance work.	40.0MW load interrup.
07:45		Barishal-Barishal(N) 132 kV Ckt-1 Scheduled S/D from Barishal 132/33kV end Due to OPGW upgration work	

Sub-Divisional Engineer
Network Operation Division

Executive Engineer
Network Operation Division

Superintendent Engineer
Network Operation Division